

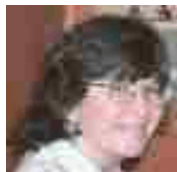


CFMS NEWSLETTER

XLII #5

MAY 2006

THE PRESIDENT'S CORNER



I have been asked to do a survey of CFMS clubs to find out what clubs are offering/teaching classes to the public as well as their members. This list will be shared with the CFMS clubs and publicized on the website. Please take a few minutes to answer these questions and send your answers to both me and Bural LaRue at our emails: colleen.mcgann@hds.com and bplarue@earthlink.net. You can also call or use snail mail.

Assistant has moved to Texas and I am looking a replacement. If you have experience with bulletins and would like to be on this CFMS committee, please contact me or Terry Yoschak.

Colleen McGann

Does your club teach classes to the general public? What are these classes? Where are the classes offered?

- At your club house?
- At a community college?
- At a County Recreation Department?
- At an art gallery, bead store, or rock shop?
- Other?

I would like to have some answers before the CFMS Directors meeting in June at Angel's Camp. I will bring this up for discussion during the Friday evening "Cracker Barrel" casual get-together and would like to have some data to share. This gathering will also be a special CFMS 70th Birthday Bash! Join us for the celebration.

This brings me right into the 2006 CFMS Show and Directors Meeting happening at Angel's Camp hosted by Calaveras GMS June 9-11. They have scheduled a great lineup of program speakers, field trips, children's activities, vendors and displays. How are you going to participate? Show us your collection or compete with your collection of minerals, fossils, petrified wood, scrimshaw or fluorescents. All information forms are on the club website, www.calaverasgemandmineral.org.

One more President's request. The Bulletin Aids

ON THE INSIDE

| | |
|--|--------|
| Contact Information | 2 |
| CFMS Calendar | 2 |
| Show Speakers Schedule | 3 |
| Directors | 4 |
| Welcoming & Involving New Members . . | 4 |
| Promoting Your Society | 5 |
| Slide and Video Library | 6 |
| Safety | 7 |
| CFMS Member Recognition | 7 |
| Trouble in Tecopa Part I | 8 |
| Junior Activities—Rock Boxes | 9 |
| Thoughts on Showmanship & Competition | 9 |
| Cab Cases North | 10 |
| Earth Sciences | 10 |
| Notes from the Executive Sec/Treas . . . | 10 |
| AFMS Endowment Fund | 11 |
| Club Members—New and Old | 11 |
| SFMS/AFMS Competitive Entry Form | 12 |
| Camp Paradise Registration | 13-14 |
| Show Dates | 15-16 |
| Officers & Chairmen | insert |
| CFMS Endowment Fund Flyer | insert |

CFMS NEWSLETTER

May 2006

NEWSLETTER SUBSCRIPTIONS

The CFMS Newsletter is published eleven (11) times a year by the California Federation of Mineralogical Societies, Inc., PO Box 1657, Rialto, CA 92377-1657. Subscription: \$5.50 per year, Jan. through Dec. Not prorated.

CFMS WEBSITE

CFMS is accessible at www.cfmsinc.org. Web Master is Don Ogden. Editors are invited to download articles for their bulletins from this website.

EXECUTIVE SECRETARY/TREASURER

Pat LaRue
PO Box 1657
Rialto, CA 92377-1657
(909) 874-5664 (909) 874-7430 fax
Email: bplarue@earthlink.net

TO REPORT A CLAIM: Report claims as soon as possible to Patt McDaniel at 1 (800) 400-7288. If no one is immediately available, and/or during non-business and weekend hours, call 1 (800) 252-4670.

CFMS INSURANCE CONTACT:

McDaniel Insurance Services, Inc.
PO Box 1294
Ojai, CA 93024
(805) 646-9948 or (800) 400-7288
(805) 848-9976 Fax
Email: mcins@west.net

Bud McMillin, Insurance Chair
1717 Oakdale Rd., Suite O
Modesto, CA 95355
(209) 527-8000 work
Email: bud.mcmillin.b7yj.statefarm.com

ARTICLES FOR YOUR NEWSLETTER DUE TO EDITOR BY 5th OF MONTH:

Pat La Rue, Editor
P.O. Box 1657
Rialto, CA 92377-1657
Email: bplarue@earthlink.net

CFMS CALENDAR

May 20 Deadline for reports for Directors packets
Jun 9-11 CFMS Show & meeting
Sep 3-9 Camp Paradise Seminar
Sep 10-16 Camp Paradise Seminar

Officers and Committees: send me event dates and due dates to include in this section.

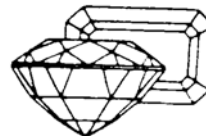
ANYTIME

Send donations for CFMS Scholarship Fund to:
Pat LaRue
PO Box 1657
Rialto, CA 92377-1657

Send donations for AFMS Scholarship Fund to:
Sue Reeves
PO Box 1899
San Andreas, CA 95249

Send donations for CFMS Endowment Fund to:
Pat LaRue
PO Box 1657
Rialto, CA 92377-1657

Send donations for AFMS Endowment Fund to:
Toby Cozens
4401 SW Hill Street
Seattle, WA 98116-1924



CFMS NEWSLETTER

May 2006

**CFMS 2006 SHOW
PROPOSED SPEAKER SCHEDULE
9-11 JUNE 2006**

| Time Period | Friday 9 June | Saturday 10 June | Sunday 11 June |
|--------------------|--|---|---|
| 11 am | | Bob Watters Geologic Hazards: Death & destruction if we get it wrong | Jeffrey Post National Gem Collection |
| 1 pm | Bob Jones Agates | Jeffrey Post Smithsonian Mineral Highlights | Bob Watters Volcanoes: How to recognition, assess & minimize hazards |
| 3 pm | Anthony Kampf Mineral Fakes | Anthony Kampf Gem Mines of Brazil | Bob Jones Crystallized Gold |
| 5 pm | Russ Shoemaker World of Fossils | Russ Shoemaker World of Fossils | |

Quick Reminder from the Show Committee

It's almost show time so please get your banquet and camping or lodging reservations in NOW so the host club can notify the caterer of the total number attending. Also as the Calaveras club is relatively small they could use your help so come early if possible. If you can help please contact Tom Reeves at star@volcano.net. Don't forget to get your competitive entries in by May 19. For more info. on the show and the forms for entries or reservations go to www.calaverasgemandmineral.org.

CFMS NEWSLETTER

May 2006



DIRECTORS

By Richard Pankey, 1ST Vice
President

Officers, Directors and Committee Chairs, if you haven't received it by now, you should receive it shortly. What is it? The call to the June Directors' meeting with the agenda. This call to the Directors' meeting is sent to the Director of record for each club. If none is designated, then to the club address/contact. The June Directors' meeting will be held on Saturday, June 10th, during the Federation Show at Angels Camp. Will your club be represented at this important meeting? With changes in club officers the CFMS office doesn't always have the latest list. It is important that each club is represented. Check with your Federation Director to be sure that he/she got this announcement and is planning to attend.

Also, review the agenda for the topics to be presented and discussed. At our Directors' Meeting we conduct a lot of important business that impacts our clubs and members. We need the input and participation of all our clubs through the attendance and participation of their directors. **Directors:** Are you planning to attend this meeting? Have you sought input, questions, and direction from your club to bring to this meeting? **Clubs/societies:** Do you have a committed, active director that will attend this meeting and represent you? Do you support your director with guidance, encouragement and help covering travel expenses?

An active, committed director is key for a participative relationship between the clubs, its members and CFMS. The stronger this relationship, the more the clubs and the members will get from CFMS and the stronger CFMS will be and the more it can do.

WELCOMING AND INVOLVING A NEW MEMBER

By Richard Pankey, Membership Committee

They filled out the application, paid their dues and were approved by the board. Another new member, Oh Boy! But now what? Will they ever come to another meeting? Will they get active? Will they be back next year? There is more to membership than getting the money. What do you want names on a list or active members on field trips, at your classes, helping at the show, participating new rockhound friends? It is hard enough to attract new members and once you get one to sign up and pay the dues you don't want to lose them.

So what can you do? Let me propose a few ideas that I have seen work for some of our societies. The key seems to be **welcoming and involving**. When a new member is accepted he/she should be called and welcomed to the club and make sure that they will make it to the next meeting. At the meeting welcome them when they arrive. Introduce them during the meeting and have them tell something about themselves. Give them their name badge, membership packet (whatever that is); make a big deal over them because a new member is a big deal. Before and after the meeting make sure they get introduced to members who have similar interests. Every (many) member should make an effort to personally introduce themselves. Every new member should be introduced in your club bulletin with a short article about them and their interests. Everyone likes to see their name in print. Bottom line, make the new member feel genuinely welcome and a part of your group. Let them know that they are wanted and are expected to be active and involved.

Involving a new member also takes effort: it doesn't just happen. Occasionally a new member

CFMS NEWSLETTER

May 2006

New Member cont...

will jump in and get involved no matter what you don't do. Especially if they are joining because they have a friend already in the club. But more often that is not the case. New people need and appreciate help and encouragement. A welcomer/mentor can help and encourage that new member. They can help the new member learn more about the club, the other members and club activities. The welcomer/mentor should learn more about the new member's interests and help them find other members with the same interests. They can help the new member find and get involved in club classes, field trips and activities. If a new member is not becoming active, is getting lost and falling by the wayside, the welcomer/mentor should follow-up and restart the process.

Try to get your new member involved by utilizing their special skills, talents and/or interests. Get them on a committee. Invite them to a show or field trip. Get them involved with your show. Each person is unique and special. You will need to tailor your approach, the process to fit them, but the concept is the same. These are just a few ideas that I have seen and heard of that are being used successfully. I am sure there are others. But I believe that active welcoming and active involving are key and essential to a successful membership program. If you have additional ideas and techniques for welcoming and involving new members or any other ideas for attracting new members please let me know.



PROMOTING YOUR SOCIETY

By Fred Ott, Secretary

If your club wants to attract new members, it's important to attract new members; it's important that you consistently advertise and promote your society in as many ways as possible. Here are some easy ways to do just that.

Newspaper advertising: every newspaper has a special place in their Classifieds Section devoted to advertising organizations such as Rotary, Soroptimist, AAA, etc. The cost is very reasonable and it's amazing how many people respond to these ads.

Telephone listing: consider purchasing telephone answering machine and arranging for a permanent telephone number for your society. The monthly costs are nominal, and the number can be reflected on all your club's advertising.

Reply postcards: make your own postcards (on heavy paper stock) or have them professionally printed. As long as your club doesn't change its mailing address, these cards can be used for many, many years with impressive results. Four postcards can be printed on every 8½ x 11 page. The front of the postcard should reflect your club's name and address and a place for a postage stamp. The back of the postcard should say something like "Yes, I'd like more information about the...Mineral and Gem society", followed by four lines indicating name of requestor, address, city/state/ZIP and telephone number. Then design a "holder" in which to place these blank postcards and distribute these "holders" to various locations of high foot-traffic such as libraries, senior centers, museums, etc. One particularly eye-catching "holder" can have the words *got rocks?* Emblazoned on bright paper, followed by the invitation to "Join the ... Mineral and Gem Society". A few highly polished rocks glued to the holder really does the trick. If you distribute these holders in more than one location, you can place a small code on each reply card indicating where the "got rocks?" holder was placed. This will provide you with a convenient way of judging the effectiveness of each site.

CFMS NEWSLETTER

May 2006

Promoting your Society cont....

Library displays: Contact your local library (and other similar locations) which often have display cases in their foyers available for local clubs to exhibit and promote their organization. Exhibits provided by mineral and gem societies are some of the most popular displays. One display can be filled with photographs of members and actual rocks collected on field trips. Another display can be filled with information regarding your club's lapidary program and include samples of finished lapidary art items. A third can promote your rock and gem show, etc. Just be sure to place a supply of "got rocks?" postcards near these displays!



SLIDE, VIDEO AND CD PROGRAM LIBRARY

Gold - Noble Metal Prized by Man
by Bill Gissler CFMS Audiovisual
Program Librarian

Did you know that your CFMS Program Library has some interesting slide and video programs about GOLD? These included V-55, F-124, V-28, V-32 and V-50. To borrow these for club meeting programs contact Bill or Sharon Gissler at 408-241-0477 or wgissler@juno.com.

For orders during May, contact Colleen McGann at 831-212-1951 or colleen.mcgann@hds.com.

To assist you in making a program selection, here is a brief description of the programs about GOLD:

★V-55 "Treasures of the Earth - Gold" is a 53 minute VHS program prepared in 1998 for showing on the Discovery Channel. The program visits ancient and modern mining sites and describes how gold is refined and used.

★F-124 "Gold" is a 60 slide program which was the AFMS 1995 first place winner in the educational class Program Competition. Showing an array of tiny gold specimens from around the world, the physical properties of gold are described along with gold's formation and where it can be found.

★V-28 "Alaskan Gold" is a 30 minute VHS program prepared by the University of Alaska. The program depicts the earliest efforts at gold mining in Alaska; illustrates washing away frozen overburden and thawing underlying gravel.

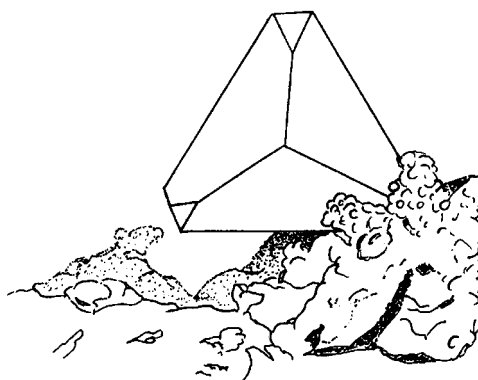
★V-32 "Gold Rush Trail - then and now" is a 30 minute VHS which describes the 1897 routes to the Klondike goldfields and the way things are now.

★V-50 "The McLaughlin Mine; Meeting the Challenge" is a 22 minute VHS made in 1990 about the Homestake Mining Company's open pit gold mine in Napa County, California.

These and all the library programs can be found on the CFMS web site in the file - "manuals". Also, an order form can be found there. Again, during May contact Colleen McGann to place a loan request; the Gisslers will not be available.

NEW ADDITION TO LIBRARY

DVD-6 The Benitoite Mine, Rod Dallas, and Coalinga is a 17 minute DVD professionally prepared. The video describes the work done by Rod Dallas to establish the Dallas Mining Company near Coalinga California. It includes historic pictures of Coalinga and the Benitoite mine, and of Benitoite - the California State Gem.



Benitoite crystal

CFMS NEWSLETTER

May 2006

SAFETY

By Chuck McKie, Safety Chair

This is the time of year we start going on field trips. Often we or our guest do have small injuries, which may require some first aid. Following is the current recommendation of the HSA for a first aid kit.

| CONTENTS | 1 - 5 Persons | 6 -25 Persons | 26 -50 Persons |
|---|------------------|------------------|-------------------|
| Adhesive plaster | 12 | 20 | 40 |
| Sterile eye pads (Bandage attached) | - | 2 | 4 |
| Individually wrapped triangular bandages | 2 | 6 | 6 |
| Safety pins | 2 | 6 | 6 |
| Medium individually wrapped unmedicated wound dressings (approx. 10 x 8 cm) | - | 6 | 8 |
| Large individually wrapped sterile unmedicated wound dressings (approx. 13 x 9 cm) | 1 | 2 | 4 |
| Extra large individually wrapped sterile unmedicated wound dressings (approx. 28 x 17.5 cm) | - | 3 | 4 |
| Individually wrapped wipes | 8 | 8 | 10 |
| Paramedic shears | 1 | 1 | 1 |
| Pairs of latex gloves | 1 | 2 | 2 |
| Sterile eye wash | 1 | 2 | 2 |



CFMS MEMBER RECOGNITION

by Loretta Ogden

Just a few words of apology and correction. Fossils For Fun nominated Don Tadlock and South Bay Lapidary nominated Leslie Neff and Larry Hoskinson.

I have the list of the winners for 2005 and will mail the pins to the club address unless otherwise notified. The 2004 recipients are a different story so if your member did not get their pin please notify me with a name and mailing address. Again I am sorry for the misspelling and omittance.

Ventura Gem and Mineral Society is nominating Shirley Layton for the Education Through Sharing Award. Shirley is editor of the club bulletin *Rockhound Rambling* which has won numerous awards, including first in CFMS and first in the American contest. Besides the routine committee reports Shirley includes in the bulletin: important news items from the BLM, CFMS, AFMS bulletins as well as lapidary and safety tips from exchange bulletins which are very helpful. Shirley does all of the printing necessary for the club show. As we have said to each other many times, we don't know what we would do without her.

Submitted by Florence Meisenheimer

CFMS NEWSLETTER

May 2006

TROUBLE IN TECOPA

By Eva

I left for Tecopa, California early on a bright Friday morning. I wanted to have plenty of time to reach camp, only 9.2 miles southeast of Tecopa, according to the instructions.

Tecopa is quite a number of miles towards Death Valley and the middle of nowhere. I arrived in plenty of time. My instructions weren't very clear, one reason why I had emailed others for verification before leaving, only to find out they had never been to the campsite either. I wasn't sure what road to take, but there seemed to be only one main road that went through. I counted my miles carefully and looked for the turnoff, but the darn thing seemed elusive. There were a few small dirt paths off the main road, but since I wasn't sure, I decided to drive back to town and ask around.

"Anyone happen to know the way to Noonday Camp?" I asked, but the locals at the Tecopa Hot Springs seemed as perplexed as me by the crude map I had in my possession, little more than a squiggly line with a dot at the end of it and the mileage. Of course, there WERE some GPS coordinates on it, but since I didn't have a GPS, that was of little use to me. Finally a friendly old man claimed to know the way. "Ya know where the sign is for the Date Farm? Yeah, it's past the date farm about 8 miles. You'll see a bridge there to cross, I think, or maybe not. I'm not sure about the bridge. But it's about 8 miles. Then you turn right towards the camp."

So I went back to where I had come from and looked for the turn. Looking at my own map, I realized it said turn LEFT. And of course there was no bridge in sight, but I had indeed gone past the Date Farm sign about 8 miles, 9.2 or so out of Tecopa, so this HAD to be it! FINally, I figured the man must have been mistaken and meant left because there was only one road at 9.2 miles and it went left. I took it.

The road was not the best and I wondered if trailers could make it on such a road. I went about one quarter mile from the main road and then became

concerned. The road was continuing to degrade. I decided to stop, get out, and climb a small hill on foot to see if any camp lay beyond. Not surprisingly, it didn't. Time to turn around.

The only problem was that my truck refused to comply. Sure the shale covered road looked hard enough, but under the shale was soft fluffy dry dirt and the wheels of the truck began to spin and spin. Since the truck is a rear wheel drive, I found that backing up often worked to get me free, but eventually, I slammed backwards into a small hill of rock and then I was REALLY stuck. Getting out the shovel, I started to dig, but nothing I did seemed to get the rear wheels to stick. I finally realized the truck was high centered in the back and so the wheels were not making good contact with the ground. The sun was setting behind the mountain and I was probably not going to be able to escape before dark. Curses at my map abounded!

I had little choice but to pitch camp and wait until morning to make my escape. I figured if I had enough time, I could simply dig out the loose rock that was holding up my truck and then the back wheels would settle back down to Earth. Setting up camp, my dog "Gecko" began to stare at a bush and growl. I hoped he was merely as on edge as I was. I could see nothing near the bush so I set up my tent heater and we both went to bed.

In the morning, I woke at the crack of dawn, packed everything back into the truck, and started digging. The rocks were jammed under the truck so the going was slow. Meanwhile, my dog Gecko kept himself busy scouting the area. I dug and dug until I realized that I was facing worst case scenario. After I had pulled away the rocks, I discovered the truck was not actually resting on any rocks. Instead it was resting on a large creosote bush stump that had been hidden amongst the rocks. And that stump would not be moving with any mere shovel! Then I looked up and realized something else. Gecko was nowhere to be seen.

...to be continued next month

CFMS NEWSLETTER

May 2006



JUNIORS ACTIVITIES: ROCK BOXES FOR SCHOOLS

By Jim Brace-Thompson, Jr Activities
Chair

Ventura County is blessed with three active societies within the CFMS: the Conejo Gem & Mineral Club, Oxnard Gem & Mineral Society, and Ventura Gem & Mineral Society. Together, they occasionally undertake "Tri-Club" initiatives. Usually, these involve joint field trips for rock and fossil collecting. This past year, through the "Tri-Club Educational Committee," they've undertaken a truly nifty project to help teach kids about the basic rock types. They are preparing three-box sets of rock specimens that will be provided to each school in Ventura County to support earth science education.

And these aren't just the little thumbnail variety of specimens you usually see in educational sets sold by such companies as Ward's or Edmund Scientific's. A sample was on public display at the recent annual show of the Ventura Gem and Mineral Society, and it was truly impressive. Three boxes are built to fit snugly and securely atop one another with a lid for the top box to keep out dust and keep in rocks. And the rocks themselves are big, fist-sized specimens. Along with each box are laminated sheets with photos and text that tell about sedimentary, metamorphic, and igneous processes. Again, truly impressive!

The big challenge is finding enough big specimens to fill each box. If you have any of the following that you'd be willing to donate to the effort, you're encouraged to contact Donna Knaption, (805) 647-8762. This includes:

Sedimentary rocks: sandstone (gray), sandstone (red), shale, breccias, conglomerate, limestone, coquina, diatomite, coal (bituminous), chalk, gypsum, and travertine or chert.

Metamorphic rocks: gneiss, marble (limestone variety), marble (dolomite variety), quartz, schist, serpentine, greenstone, slate, garnet schist, soapstone, mariposite, and hornfels.

Igneous rocks: granite, basalt (different varieties, such as aa and pahoehoe), rhyolite, pumice, scoria, gabbro, pegmatite granite, andesite, obsidian, tuff, and diabase.

With big impressive specimens like these, it's a sure bet the kids of Ventura County will soon be learning while—always—having fun!

SOME THOUGHTS ON SHOWMANSHIP AND COMPETITION

By Dr. Robert Carlson, AFMS President-elect

Think about competition for your show. It has been my observation that when a show includes competitive exhibits, the quality of all the exhibits improves. They reach another level of showmanship.

Is showmanship important? You bet. I remember attending a show put on by a club that was vehemently opposed to competition. It was a fairly large club, and they had a lot of cabochon displays. Most of these - case after case, row upon row - were displayed in flat cases where you had to bend over the case to see what was being displayed. There were no case lights, but that was a good thing. Some of the case liners were filthy, and a few almost fit. The cabochons were packed together so that one could barely distinguish one from another. The labels were nearly non-existent, so you had to know what you were looking at to determine what material was being displayed. Imagine that you are a member of the general public and want to learn more about the hobby. Would the just described displays help or encourage you in any way?

When you see a show with competitive exhibits, you will see displays of cabochons that are well lit so you can see the beauty of the material and the quality of the polish. Because the cabochons are labeled - with labels that do not overpower the display - you can determine what materials are being shown. The liners will be clean, fit well and complement the material being displayed. There will be a focus to the cases of one or two items that will draw the attention of those who pass by. The items in the display will be neatly arranged and separated from one another so that once attention has been gained, the viewer can examine the rest of the items in the case at leisure.

The displays just described will thrill and educate the public. It is professional showmanship at its best. So why competition?

Competition allows at least two independent individuals to review and critique a display and offer suggestions for improvement. This is especially important to a person who is just starting to display his or her material. When a display draws a lot of attention from the public, not only the material, but the showmanship is very good. Remember that the general public does not necessarily know about the hobby or the material being shown. It is the showmanship that stops them in front of the case and they learn about the material being displayed from that point forward.

CFMS NEWSLETTER

May 2006

CAB CASES - NORTH

By Mary Ann King, Cab Cases – North

This is to remind all northern California and northern Nevada clubs that the CFMS Cab Cases are available for display at your shows. If you would like them for your show you can write to me at 300 East H Street #55, Benicia, CA 94510 or call me at (707) 747-5186. To insure that the cases will be available for your show and so I can coordinate with other clubs who want the cases, please contact me as soon as you decide that you want the cases. Hopefully at least two months before your show.

The Cab Cases are a display of cabochons from most of the CFMS clubs. Each cabochon was made by a club member and donated to CFMS in honor of that club.

Remember, the cab cases are available for display at your shows. The Chairmen for the different areas are listed in the CFMS Newsletter. Contact the chairman in your area for arrangements to have the cases in your show.

NOTES FROM THE EXEC SEC/TREAS

★Reports for the June Directors meeting packets are due by May 20. You can snail mail, e-mail or hand carry—doesn't matter as long as you get them to me. Can't make the deadline? No problem. Bring at least 100 copies of your report to the meeting for distribution.

★Have you mailed or faxed your officer change form? I will begin work on the roster soon after April 15 and even though the changes may not make it in time for publication, the changes will be reflected on the newsletter mailing list and in contact information files.

★Most clubs have sent their dues/insurance payments but there are a few holdouts. Please take care of this matter ASAP. If your club no longer intends to continue affiliation or if you are in the process of disbanding, we need to know that too.

EARTH SCIENCES

By Cal Clason

We just completed another fantastic outing at Zyzxx!! As usual, a full house of congenial overachievers with a great display of things accomplished at our Friday Show & Tell. There is no doubt in my mind that many would be award winner if entered competition. My thanks to everyone for their contributions in making it a pleasure to be a part of this outstanding program. A very special thank you to the committee, instructors, kitchen staff and volunteers who made it what it was. Without their help it would have been impossible.

Unfortunately, as with any group, there those who feel that rules and common decency do not apply to them and unfortunately cause everyone to be apprehensive. This is brought on by items being left in training areas and disappearing. Whatever the reason, it does create an aura of distrust to both the artist and staff. Unfortunately we have not come upon a way to control it; we can only hope that nothing of this nature presents itself in the future. Presently we have confirmed dates for 2007 during March 18-25. Due to an increase in cost for the facility, we must raise the cost to \$300 per week, per person. This is not to our liking, but necessary to pay the bills.

Jack Williams, the northern coordinator, is well on the way with plans for 2006 edition of Camp Paradise during September 3-9 and 10-16. Marion Roberts is coordinating the catering so that everyone gets to eat. As it presently stands we will have Lorre Snyder run the kitchen. She worked the last two years with the Bartons, so is aware of our requirements. Anna Christiansen will again handle registration and room assignments. Jack is contacting instructors to confirm their willingness to teach classes. We should have our program set by the Convention & Show at Angel's Camp. With the assistance of those listed above it doesn't leave much for me to do except be a nuisance. I greatly appreciate their expertise, enthusiasm, and willingness to do some difficult tasks.

We have been able to maintain the \$250 fee for this year, but are unable to predict the future. As usual I urge those of you who receive the Newsletter to pass the information on to your club members. Prompt registration much enhances the assurance of being accepted. More later as things are confirmed.

CFMS NEWSLETTER

May 2006

AFMS ENDOWMENT FUND

By Bural LaRue

The AFMS Endowment Fund is conducting a prize drawing to benefit the Fund. Prizes have been donated from all seven federations and more have been promised. Anna Christiansen donated one of her peyote stitch bracelets at the Zyzxx seminar last month. All prizes can be seen by visiting www.amfed.org/endow2006.htm. Tickets are \$5 each or 5 for \$20. Prizes will be awarded at the AFMS Awards Dinner in Nashville, TN on August 19. You need not be present to win.

I will have tickets available at the CFMS Convention and Show at Calaveras in June. If you can't be at the show, wish to support the cause, and maybe even win one of those marvelous prizes, mail your check payable to the AFMS Endowment Fund and your tickets will be in the mail.



"I've changed my mind, Edgar
go ahead and buy the facet cutter!"

by Bill Mittlebeeler via Dust & Grit 2/00
via Golden Spike News 4/00

PATIENCE

Patience is the ability to idle your motor when you feel like stripping your gears.

From *MWF Newsletter* 3/96 via *Glacial Drifter*, 4/98

CLUB MEMBERS—NEW AND OLD

By Mary LaVigne

You can tell a new club member from a long time one by the state of his garage. The newcomer has little but a car and some lawn equipment in his garage, whereas long time members have a hard time getting to their cars through the obstacle course of rocks, boulders, cartons of "rough", supplies, and old equipment stored because either it needs to be repaired or newer models have been acquired and the old equipment is still too good to get rid of. The new club member has no door stops in his home and no rock garden in his yard. The walkways around his house and the borders of his flower beds are PLAIN...naked of stone edging.

Old club members sparkle at club meetings. The men wear a different bola each month. The women have rings on every finger. Some have been observed wearing two and even three necklaces at a time. New males club members have unadorned shirt necks (unless you count buttons) and the ladies wear only wedding bands and watches. But, not-to-worry, after the first gem and jewelry show that they attend, you can hardly discern the new from the old.

Old members wear club vests encrusted with pins and patches. New club members wear name tags and ask for the loan of a vest pattern.

New club members are generally in awe of the older ones who have been everywhere, collected everything, and have contacts in gem clubs and businesses around the country, to say nothing of the scientific types with whom they are on a first time basis. They have learned to turn pebbles and rocks into sparkling gems, metal into jewelry and sometime jewelry into cash. But, above all, they can be relied upon for the correct identification of gemstones and rough material and know bargains when they see them.

New club members are elevated to the status of old club members by:

- acquiring experience and knowledge
- participating in activities and field trips
- enduring until the club acquires still newer members

From *The Oak Cliff Rockhounder*, 8/95 via *SCFMS Newsletter*, 11/95

CFMS NEWSLETTER

May 2006

COMBINED SFMS & AFMS CONVENTION

Nashville, Tennessee

August 18 - 20, 2006

Competitive Exhibit Entry Form

INSTRUCTIONS: Complete all information and mail to: **Betty M. James, 167 Florence Circle, Florence, MS 39073, (601) 914-6747, to be received no later than Feb. 15, no exceptions.**

NAME _____ PHONE _____ E-mail _____

ADDRESS _____
Street City State Zip

EXHIBITOR GROUP: Master ___ Advanced ___ Novice ___ Jr ___ Soc. ___ Jr Soc. ___

DIVISION _____ EXHIBIT CLASS _____ SFMS _____ AFMS Direct _____

For Direct Entry: Date & Location of Regional Show where Eligibility was achieved

Exhibitor Group cannot be changed after Form has been accepted. Anything else can be changed up to exhibit is finished before judging.

CASE AND SPACE INFORMATION:

I will use my own case: Yes ___ No ___ Dimensions: W ___ H ___ D ___

Lighting is limited to 150 watts per 4' of exhibit space.

Do you need to borrow a case? _____ Note: Nashville has a limited number of modified NW slant-front cases which will be assigned on the basis of postmark date. You must furnish your own liners and risers.

Set-up time is from 3:00 pm to 8:pm Thurs., Aug. 17 and 8:00 am to 9:00 am Fri. Aug. 18.

All exhibits must remain in place through 5:00 pm Sun., Aug. 20 and be removed as soon thereafter as possible.

All Exhibitors must sign this statement except those entering Division E See AFMS UR Page E-2, Rule 17.9.

I CERTIFY THAT ALL MATERIALS EXHIBITED IN COMPETITION ARE MY PERSONAL PROPERTY, AND THAT ALL WORKMANSHIP (EXCEPT MINOR FINDINGS AS ALLOWED BY AFMS RULES) WAS DONE BY ME.

SIGNED _____ PRINT NAME _____

Society name _____ City & State _____

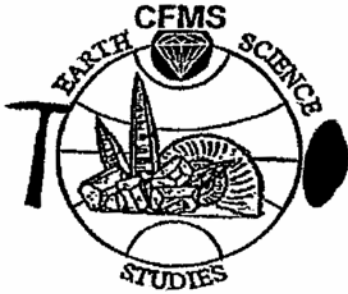
Club Officer Signature & Title _____

Birth Date if Junior _____ Date of form: _____

MTG&MS WILL FURNISH SECURITY AND TAKE REASONABLE PRECAUTIONS TO PROTECT PROPER- TY AND PERSON OF EXHIBITOR BUT WILL TAKE NO RESPONSIBILITY FOR ANY LOSSES OR CLAIMS.

See AFMS Uniform Rules, 8th Edition, updated, to correctly fill out this application.

Use separate sheet for each exhibit. Copy of form will be returned to you when exhibit is accepted.



THE CALIFORNIA FEDERATION OF MINERALOGICAL SOCIETIES, INC.



\$250 WEEK PER PERSON – COMPLETE THE REGISTRATION FORM AND MAIL WITH FULL PAYMENT.

Two Earth Science seminars will again be offered at CAMP PARADISE, approximately 45 miles east of Marysville on Highway E-21 (Clipper Mills). You may register for either or both weeks. Various classes will be offered in both sessions, limited collecting trips, sightseeing and evening entertainment. The Earth Sciences Committee retains the right to accept or deny applications as they deem appropriate.

**MAKE CHECKS PAYABLE TO
CFMS EARTH SCIENCES AND SEND TO:**

John & Anna Christiansen
Avenue 245 6TH Ave
Oakdale, CA 95361
(209) 847-1173

FOR INFORMATION CONTACT:

Jack F. Williams
2608 Retirement Ln.
Placerville, CA 95667
(530) 622-3038

Cal & Dee Clason
10100 Laurie Avenue
Bakersfield, 93312
(661) 589-4169

The facilities are at a rustic church camp, rooms with double beds and or bunk beds. Bathrooms and shower are communal and located in each building. Occupants are required to provide a cover for the mattress under your regular bedding. Housekeeping is the responsibility of each guest. Also available are individual cabins (very rustic, electricity, but no plumbing, bathroom and shower facilities are nearby.) RV spaces available, hook-ups when deemed appropriate by staff. Since it is a church camp, no alcoholic beverages are permitted.

REGISTRATION CLOSES AUGUST 15. NO CANCELLATIONS AFTER THIS DATE UNLESS A REPLACEMENT IS PROVIDED. A \$25.00 ADMINISTRATION FEE WILL BE ASSESSED FOR CANCELLATION PRIOR TO THIS DATE.

PLEASE CUT ALONG LINE – SEND IN LOWER SECTION – KEEP THE UPPER PORTION FOR REFERENCE

✂

REGISTRATION FORM – PLEASE PRINT CLEARLY IN BLOCK LETTERS

SEPTEMBER 3-9, 2006 ____ PLEASE INDICATE DESIRED DATES SEPTEMBER 10-16, 2006 ____
\$250 PER PERSON PER WEEK

(Mr. Mrs. Ms) _____ Phone (____)

Address _____ City _____ State _____ Zip _____

E-Mail _____

Club affiliation _____ A CFMS affiliate

Type of accommodations desired: Check one

Double Room ____ RV space ____ Dormitory ____ Cabin ____ Other (Please indicate) ____

Special needs: (Explain briefly) _____ Food _____ Housing _____

Room assignments will be made by staff. Accommodations will be made when possible; please list preferred room and/or roommate. Room with _____

**CLASSES AND INSTRUCTORS PRESENTLY SCHEDULED FOR CAMP PARADISE
WEEKS 1 & 2**

Gem Carving – Dick Friesen
Beginning Wire Art – Anne Christiansen (Available Second Week If Enough Interest Is Shown)
Silver Chain Making – Lois Allmen
Silver Fabrication – Norvie Enns
Lapidary – Tom Burchard
Soft Stone Carving – Margaret Kolaczyk
Faceting – Marion Roberts, John Christiansen & Dian Gardner
Lost Wax and Silver Casting – Bural LaRue & Joy McClure
Glass Bead Making – C. J. Quitoriano
Pmc Silver Clay – Judy Gooch (1st Week Only)
Advanced Wire Art – Dale Nichols (1st Week Only)
Glass Fusion – Judy Gooch (2nd Week Only)
Copper Enameling – Betty Egger
Beading – Shirley Hill

Please note that there are some limits to the number of students accepted for each class, so be prepared to accept a different one if space is not available for your preference. No reservations are made and each class is filled on a first come first served basis.

What to bring for your comfort:

Sleeping Bag or Bedding
Pillow
Flashlight – Spare bulb & batteries
Sturdy foot wear
Toilet Articles – towels, washcloth

Warm jacket
Sunscreen, Sunglasses, Hat
Extra set of car keys
Alarm clock

jw