



# CFMS NEWSLETTER

Vol LII #5

May 2015



## PRESIDENTS MESSAGE

By Tom Burchard



REMEMBER  
MEMORIAL DAY

There will be no President's Message in this issue of the newsletter. Tom and Brenda had to leave for the east coast right after returning from Zyzxx due to the passing of Brenda's mother.

We extend our condolences to them in their loss.

### On the Inside

Mark Your Calendar.. . . . .	2
CFMS Insurance & Website Contacts. . . . .	2
Donations. . . . .	2
Demonstrators & Demo-dealers Wanted. . . . .	2
Donations Needed. . . . .	3
A Golden Opportunity. . . . .	3
Visual Library. . . . .	3
Working With Faulty Electrical Equipment. . . . .	4
2015 Breakfast Editors & Webmasters. . . . .	5
Ya Gotta Love Software. . . . .	5
Membership Committee News. . . . .	6
Ask Bob. . . . .	6
Issues That Bubbled Up This Year. . . . .	7
Tax Filing Reminder. . . . .	7
AFMS Judge Training. . . . .	8
Rockhound Soapbox. . . . .	8
Show Dates. . . . .	9-10
Camp Paradise Registration. . . . .	insert

MARK YOUR CALENDAR

May 5. . . . . deadline for June newsletter  
June 12-14. . . . . CFMS Convention & Show  
Aug 30-Sept 4. . . . . Camp Paradise Week 1  
Sept 6-11. . . . . Camp Paradise Week 2

Please send any information you want included in the Directors packets for the Convention Meeting by May 5. If unable to meet this deadline, please bring 100 copies to the meeting. Thank you

CFMS INSURANCE CONTACTS

**McDaniel Insurance Services**

PO Box 1294, Ojai, CA 93024  
Tel (805) 646-9948 or (800) 400-7288  
Fax (805) 646-9976; email: [mcins@west.net](mailto:mcins@west.net)  
Web Site: [www.mcdanielinsuranceservices.com](http://www.mcdanielinsuranceservices.com)

**CFMS Insurance Chairman**

Fred Ott  
3420 Coach Lane, Ste 4  
Cameron Park, CA 95682-9113  
(503) 677-5211  
[fred@fredott.net](mailto:fred@fredott.net)

CFMS NEWSLETTER SUBSCRIPTIONS

CFMS Newsletter is published 11 times a year by the California Federation of Mineralogical Societies, Inc., PO Box 1657, Rialto, CA 92377-1657. Subscription: \$5.50 per year, January through December.

CFMS WEBSITE

The CFMS website is accessible at [www.cfmsinc.org](http://www.cfmsinc.org) the email for the web site is [cfmswebsite@yahoo.com](mailto:cfmswebsite@yahoo.com). Editors are invited to download articles for their bulletins from this website.

NOTES FROM THE EDITOR

The deadline for the newsletter is the 5<sup>th</sup> day of the month prior to the month of publication. Articles should be sent to the editor at [bplarue@earthlink.net](mailto:bplarue@earthlink.net). “snail mail”? Please send to the CFMS PO Box 1657, Rialto, CA 92377-1657.

DONATIONS

Donations to any of the funds administered by CFMS and/or AFMS are tax deductible under the rules governing tax exempt organizations which are 501(c)(3). Your cancelled check or receipt is considered to be proof of your donation for purposes of filing your federal tax return. If a personal donation is \$250 or more, a letter attesting to that amount is also required. Member clubs and individuals are encouraged to donate to any of the following:

- CFMS Scholarship Fund
- CFMS Endowment Fund
- CFMS General Fund
- Diedrick Memorial Scholarship Fund
- AFMS Scholarship Foundation
- AFMS Endowment Fund

Your donations should be sent to:  
Pat LaRue, Exec. Sec/Treas  
PO Box 1657  
Rialto, CA 92377-1657

Receipts and any supporting documents will be forwarded on to the committee member responsible for acknowledgements. **Please make all checks payable to CFMS or AFMS as appropriate and note the fund in the memo section.**

DEMONSTRATORS AND DEMO-DEALERS WANTED

By Cheri George



Hello!! We are still seriously looking for Demonstrators and Demo-Dealers for our CFMS Show 2015. This show will be held in Lodi, CA at the Grape Festival Grounds on June 12-14, 2015.

We will start at 10:00 am each day and keep going until we can't work any longer. The times available are in 3 hour increments, or if you want to be there for the entire day you can do that also. You can go to the CFMS Website for the show info and download the demonstrator/demo-dealer form.

Please contact Cheri George for information concerning the availability for your demonstrator spot, [lizardwoman3@yahoo.com](mailto:lizardwoman3@yahoo.com) or 562-243-8470 (leave me a message if no answer, I will get right back to you).

## DONATIONS NEEDED

The Endowment Fund is planning to conduct a silent auction during the upcoming CFMS show in Lodi. To make this a resounding success we need your help.

If each Director brings just 10 items for the auction we will have the ingredients to make this happen. Please bring items you would bid on—rough rock, slabs, finished lapidary and jewelry items. I have already received donations of things which I will bring to Lodi. Because space is limited in my truck, I cannot bring large amounts of rough rock.

The Reno Gem & Mineral Society donated a 13.5 carat yellow fluorite stone faceted by one of their members. The stone will be on display all weekend at the Endowment Fund area. The donor estimates the value of this collector stone to be \$400. Minimum bid will be \$100. The highest bidder at the close of the show will be the lucky winner.



–Bural LaRue



## A GOLDEN OPPORTUNITY FOR YOU & CFMS AT THE LODI SHOW

by Jennifer Haley

The Napa Rock & Gem Club had a wonderful member years ago, Roselyn Johnson. She was a mineralogist and a fossil collector who traveled the world. Everyone adored her who knew her. On one special trip, she helped the Japanese government identify a collection for one of their museums.

In the 70's, Rosie donated a collection of items to the Napa Valley Museum. Thinking of the financial future for the museum, she also donated 31 separate boxes of fossils and minerals valued at \$12,600 then, specifically marked for the museum to sell when they wished or needed to. That particular collection has been in deep storage until now. In coordination with CFMS, the museum will be selling these items at the Lodi Show, in the building where the lapidary arts and crafts demonstrations will be.

The museum will be donating 20% of their sales to CFMS, so please bring your pocket books and make room in your cars, because there will be very special treasures to buy whether you are a novice or investor collector, or want to give someone a rare gift. These fossils and minerals are from all over the world, and the collection includes several Suiseki from Japan.



## VISUAL LIBRARY

By Sharon Rogow, Chair

Still looking for those of you who are technically adept & knowledgeable enough to set up programs on the Federation website for direct download to our clubs/societies. I know that you are out there & we need your help. Please contact me at [sharonrr@cox.net](mailto:sharonrr@cox.net) or (702) 499-0272.

I am planning to review one or two programs each month so that members will have more info to help make selections. I'll start with "Red Treasures of the Rockies- Rhodochrosite ". It is the story of the Sweet Home Mine in Colorado in two segments of 40 minutes each and follows the history of the mine.

Although a challenging project, when rhodochrosite was found, it was often spectacular! We have it on DVD-49 and Video-114. It is both interesting and informative. Try it, you'll like it!

---

## Some notes from the editor...

The preregistration form published in the last newsletter had the price for the banquet accidentally lost when I converted the document from its original format. The price is \$35. All forms for the show are posted on the CFMS website and are available for download. From time to time I receive email from club editors who are having a problem copying and pasting the newsletter when posted to the website. If having problems please let Merryan know so she can look into the issue. She has an article elsewhere in this issue which addresses some of the issues a few of you have experienced.

Due to long hours at the office during the latter few weeks of the tax filing season, this issue is later than normal. I now have at least 3 months off before I return to the tax desk. Maybe I'll get caught up!!



## WORKING WITH FAULTY ELECTRICAL EQUIPMENT CAN MAKE YOU BECOME A REAL LIVE WIRE!

by Mark Nelson, Safety Committee

One of the great things about the lapidary hobby is that most of the powered equipment that we use is simple, reliable and serviceable. Saws, polishers, grinders and such are often passed down through various users to clubs and from clubs to individuals. With just basic maintenance a piece of equipment that is 40 years old can perform as well as it did when it was new!

One of the hazards we face when we work with older electrical equipment is in the electrical service. Extension cords and connections are not meant to last forever and must be inspected and serviced or replaced as needed. Here are some of the common conditions found on lapidary equipment that must be corrected:

**Grounding.** Grounding is the process used to safely eliminate unwanted voltage by directing that voltage to a safe connection to the earth. Electrical equipment must be properly grounded. At one time buildings were constructed without integral grounding (that round hole in a plug outlet connected to a little green grounding wire). When electrical devices, such as polishers, were manufactured with internal grounding their power cords had two flat prongs and a round ground prong. When the new three-prong cords would not connect to the old two-prong outlets, users simply cut off the round ground prong. Now the equipment could be used, but there was no longer protection from electrocution! If your equipment has a cord with the grounding prong removed it must be fixed. Buy a grounded plug and replace the hazardous one. It is easy to do with a screwdriver, snips and a pocket knife.



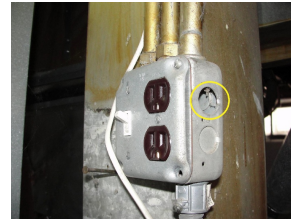
**Frayed Connections.** With time and use the point at which a power cord connects with a piece of electrical equipment can become frayed. This will eventually lead to either the equipment shorting out, a fire, injury or all of the above. When you find this condition you may be able to re-insert the cord



into the device's connection box and tighten the clamping screws. Otherwise, an electrical appliance shop can replace the cord at a small charge.

### Exposed electrical openings, wires or terminals.

Electrical hazards exist when wires or other electrical parts are exposed. Wires and parts can be exposed if a cover is removed from an electrical connection, outlet or



breaker box. Electrical terminals in motors, appliances, and electronic equipment may be exposed.

Older equipment may have exposed electrical parts. If you contact exposed live electrical parts, you will be shocked.

You need to recognize that an exposed electrical component is a hazard. Replacement covers for holes and motors are available at your local hardware store and typically need only a screwdriver to make them safe.

**Extension Cords:** Defective or inadequate insulation is a hazard. Insulation prevents the electrical conductors from contacting each other or you. A split or cut extension cord that exposes the internal wires is a sign that there may be more severe damage that you cannot see. Replace damaged cords. Never attempt to repair a damaged cord with tape. Never hang extension cords from nails or sharp objects. Do not run extension cords through doors or windows.



### Ground Fault Circuit Interruptors:

Many industrial plants and construction sites are using 2-foot extension cords equipped with a 3-way plug fitting and a built in GFCI. These devices interrupts the electrical circuit to a load when a fault circuit of 6mA or more is detected. It has to be manually reset after a trip incident, an important feature that prevents equipment from restarting without correcting the problem. Cost: between \$19 and \$59.

Of course, always disconnect the power to the cord or equipment before performing service or repairs. Be safe out there!





## 2015 BREAKFAST WITH THE EDITORS & WEBMASTERS

By Merryan O’Neill

We hope that you can attend the *CFMS Breakfast with the Editors and Webmasters* on Sunday, June 14, at the CFMS Show in Lodi.

The breakfast is a time when Editors and Webmasters are recognized for all that they do for societies. Additionally, contest awards are given to other members of societies who contributed to their newsletters. These awards to editors, writers, and webmasters recognize participation in an essential part of a society’s communication.

This year’s presentation at the Breakfast will be about Effective Web Sites. We will also provide tips on keeping your email account secure. Details about our speaker and presentation will be in the next newsletter.

In the meantime, I hope that you will preregister for the show and breakfast by submitting an Advance Registration Form.

All show forms can be found on the CFMS website by going to [www.cfmsinc.org](http://www.cfmsinc.org) and clicking on the CFMS Show link or using [www.cfms15show.com](http://www.cfms15show.com).

Both Terry Vasseur and I look forward to seeing you there.

---

## YOU’VE “GOTTA” LOVE SOFTWARE

By Merryan O’Neill

This message is to editors and other members who copy articles from CFMS Newsletters and other publications that publish online in Adobe Reader. I recently figured out a mystery that, probably many of you already discovered.

By using three browsers to view web sites: Explorer, Firefox and Chrome. I found that the success of copying an article from Adobe Reader depends on which browser I used to view the web site in the first place.

The following example is from CFMS President’s March Message:

**Explorer** – The copied article comes out in a block of text, but returns can be recovered using “Find, Special, Paragraph Mark (^p).” I’ve been doing this painstaking exercise for years.

Finally! I heard back from one of you. He made a very good suggestion as to our problem with ESS Enrollment for Zzyzx....

**Firefox** - The copied article comes out in a vertical string of letters! Pretty much useless. The following configuration went on for another 80+ characters just for the first paragraph.

F  
i  
n  
a  
l  
l  
y  
!

**Chrome** (the “ah-ha” moment) – The copied article comes out WITH returns and follows the current format:

Finally! I heard back from one of you. He made a very good suggestion as to our problem with ESS Enrollment for Zzyzx....

Not that I’m promoting Chrome, but for this purpose it is very useful.



## MEMBERSHIP COMMITTEE NEWS

By Bob Rush, Membership Committee Chairman

As many of you have probably heard there will be an area set aside for the Club Central activities at the CFMS annual show in Lodi in June. The purpose of this area and its activities is to gather information and ideas that will help the member clubs to conduct their activities in the best manner possible. From the club surveys that I have received so far it has become evident that many clubs share common problems that round table discussions could help us all solve as well as sharing methods that other clubs have developed to address these common problems. In discussing these issues with another member of the CFMS Membership Committee - Dick Pankey - we have developed a list of things to be discussed during the round table sessions. They are:

1. How to grow your club membership
2. How to retain new members
3. How to retain older members
4. How to deal with disruptive, argumentative or toxic members
5. How to conduct and control board meetings when there is contention, name calling and other attacks on other board members
6. How to find younger workers for the more difficult physical activities at the annual show
7. How to recruit, motivate and educate potential new board members.

We are certain other topics exist but we need you to send them to us so that they can be included in the Club Central discussions. Please send them to me at [rocksbob@sbcglobal.net](mailto:rocksbob@sbcglobal.net) or Dick Pankey at [dickpankey@juno.com](mailto:dickpankey@juno.com).



## ASK BOB

**QUESTION:** I'm evaluating what might be involved being president of our club. I have been avoiding volunteering to run for the position because I have observed all this parliamentary procedures stuff and frankly I have little to no

knowledge about the rules and such that you have to follow. I suspect that many others are reluctant to be president because of their similar concerns. How do I find out about these rules?

**ANSWER:** One reason why it is difficult to attract candidates to leadership positions in a club is that members don't fully understand the requirements of the position and they are unsure of how to conduct a meeting utilizing the Robert's Rules Of Order. Most clubs and societies have constitutions or bylaws that clearly describe the requirements of the various positions but these descriptions rarely delve into the Robert's Rules Of Order. They reference using the Rules but that's about all. I feel that there isn't enough exposure or education of the organization's members to this information. This will be a topic of discussion on the Club Central's discussion agenda at the CFMS annual show in Lodi in June.

When I was elected to the position of president I also was rather uneasy about knowing the Rules Of Order needed to conduct a meeting. I immediately sought out what I could find about the Rules. The first thing I did was get the society's copy of the Roberts Rules Of Order. It is a very lengthy book (100's of pages) and after spending a few hours trying to understand, remember and extract the relevant rules needed to conduct a meeting my brain hurt! I figured there must be a better way to approach the learning of the subject. After stumbling about the subject on the internet I decided to go to the local bookstore where I found a much smaller, more clearly written copy with a quick reference section that easily gets you to the information. It is "Robert's Rules Of Order, Newly Revised **IN BRIEF!**" It is a smaller paperback book that extracts the most used and relevant rules needed to conduct meetings and business in a club. It has scenarios and questions on the most used and relevant rules parts of the Rules. You can quickly look up those sections that you need for nearly all situations that most clubs encounter during a meeting. I was able to get a clear idea on what I needed to know to conduct a meeting in a couple hours of reading. I would recommend getting a copy and spending a few hours on the contents. I hope this eases your fears about becoming a leader in your club!

## THE ISSUES THAT BUBBLED UP THIS YEAR

by Terry Vasseur



Looking back at last year's contests; they went smooth as silk, no issues. This year it was a little different. As far back as I'm aware of, the CFMS has used two judges to score our Bulletin Contests. I assume they started this to get a more accurate (Fair?) score. The AFMS uses only one judge for each category. Why? Because they don't want to have to deal with ties. Let me show you how easily it can happen having two judges.

	Judge Harry	Judge Marry	Final Averaged Score
Contestant Paul	94 pts	92 pts	= 93
Contestant Judy	96 pts	90 pts	= 93

We had two ties this year but neither effected a first place winner, *thank goodness*. I say that because we don't have a process in place on how to deal with ties. And for that matter, I don't see where we have a clear rule that tells us how many judges we need to score a bulletin contest. We simply ask our editors to give us three copies when you submit an article or newsletter for our contests, two for the CFMS contest and one (for the AFMS) in case it gets scored in the top three in the CFMS contest. That seems to me it is up to the Bulletin Aids Chair to decide the number of judges to score our contests and to manage a way out of a tie.

Personally, I don't think we want the chairperson to monkey with the judge's scores when a tie occurs. That leaves us with no other way to resolve the problem than to go to back to the judges and ask for a *re-evaluation*. But which judge to go to, *the one that will give you the least amount of grief?* (Probably.) What the Bulletin Aids Chair should do is carefully read the comments the judges have written for clues that support their score. In other words, look for the one with the least fervor and go to that one for help.

I was wondering if there might be another way to avoid this perplexity, that there is a mathematical solution. I went on line and found a mathematician who said she had a solution for me for \$56 but without a satisfaction guarantee, it didn't seem worth the risk. I still think there might be an elegant solution (as my professor was fond to say) to this problem but in the meantime; I guess we will simply have to continue on working closely and honestly with our judges to get the right solution.

[wookman@dslextre.me](mailto:wookman@dslextre.me)

### TAX FILING REMINDER

Don't forget to file the required information returns to the IRS and the state of California by the due date. For most organizations this date is May 15 if you use the traditional calendar year. If you use a "fiscal" year with the year ending in any month other than December your due date may have already passed.

Most of you will qualify to use the 990N postcard; the corresponding document for the state is 199N. Each can be accessed online and must be filed online. There is no paper equivalent.

It doesn't matter who takes care of this matter as long as it gets done. Many organizations have lost their non-profit status by neglecting this simple procedure. Getting it back will cost time filling out paperwork and submitting perhaps several hundred dollars in fees.

If you are incorporated, don't neglect sending the biannual SI-100 (statement of information) to the Secretary of State. This office generally mails a reminder and a form several weeks in advance of the due date. You can also access the form online at the CA Secretary of State website.

## AFMS JUDGES TRAINING

By Barbara Sky and Donna Moore

The MWF is hosting an AFMS Judges Training session at the Greater St. Louis Association of Earth Science Clubs Show in St. Louis, Missouri, on August 14-16, 2015. Jay Bowman will be teaching the class which will be held at The Lodge Hotel, then judging will take place at the show on Sunday, August 16.

Anyone who would like to become an accredited judge is welcome to participate in this training class. It has been approved as the AFMS training for this year. Your cost will be for your room, meals and travel. This is open to anyone from any federation, not just the MWF.

The class site motel is The Lodge Hotel, which is actually in Bridgeton, Missouri, but not far from the show site. If you are interested in attending the training class, please contact Barbara Sky, so she will be able to give the hotel an idea of how many rooms we need to reserve. She can also get back to you with the details. You will actually make your own reservations at the motel by using the code “Judges Training”. Phone number for the motel is [314-298-0388](tel:314-298-0388).

Jay’s class is two days of classroom sessions, which involve going over the AFMS Uniform Rules, which can be downloaded from the AFMS Website [www.amfed.org](http://www.amfed.org), then a day of practice judging. It is a time commitment, but if your federation is like the MWF, the number of trained judges has dwindled.

Barbara Sky, MWF Uniform Rules Chairman, can be reached by e-mail at [bskysky@aol.com](mailto:bskysky@aol.com), by phone 636-207-8766 or by mail at 25 Roland Ave., Winchester, MO 63021-5259. Or, Donna Moore, MWF Secretary, can be reached at [mwfsecretary@gmail.com](mailto:mwfsecretary@gmail.com) or by phone 309-231-2116, if you cannot reach Barbara.



## THE ROCKHOUND SOAP BOX

John Martin – CFMS PLAC  
[plac@antelecom.net](mailto:plac@antelecom.net)

Some of our effort seems to be working. I have received emails from Rockhounds that have read our announcements about Recreational Rockhounding in the deserts of California. They have become pro-active in furthering the cause of Recreational Rockhounding on Public Lands and have attended public meetings on these important issues and letting the decision makers know we are out there and we do care about roads, access, and collecting rights. I applaud the actions of these Rockhounds who are now getting involved in the Land Management Process.

There are still a lot of activities that will require Rockhound participation in order to keep Rockhounding alive. The last remaining open and no- designated areas in the California Deserts are being identified and given designations through **S 414: California Desert Conservation and Recreation Act of 2015**. If enacted this bill will remove the Cady Mountains from the Wilderness Study Area and reopen it to multiple use status, it will create two new National Monuments with special attached conditions which will guarantee that current open roads and trails will remain open and accessible to motorized usage and current Recreational activities will continue to exist which includes Recreational Rockhounding.

For the first time in recent history this bill will create an Advisory Committee as a legislative action and will create a seat on the committee for a representative from the Rockhounding Community. This means that Rockhounds will have a place and a voice along side the Federal, State, County, City, Department of Defense, Utilities, Conversationalists, OHV, Hunters and other users of the California Deserts. This will be a big opportunity for Rockhounds to get involved in shaping the Recreational Rockhounding in the California Deserts for generations to come.

There is still much work to be done if Rockhounding will continue on our public lands. Your voice, ideas and knowledge is needed to carry Rockhounding forward to the next generations of Rockhounds. So keep up the good work and get involved when ever and where ever possible.

Information on S 441 and other Land Management issues can be found at:

<http://www.amlands.org/6652/67112.html> where you can read the latest information and decide what course of action you may want to pursue!

For comments or concerns I can be reached at: [plac@antelecom.net](mailto:plac@antelecom.net)



## CFMS SHOW DATES

*Shows and Events  
sponsored by  
CFMS Clubs & Societies!*

*Please submit your  
Show or Event information as soon as  
you have a date.*

*Email or mail to:  
SHOW DATES*

*Susan Chaisson-Walblom*

*42122 52<sup>nd</sup> St. West,*

*Quartz Hill, CA 93536*

*Email: [slchaisson@yahoo.com](mailto:slchaisson@yahoo.com)*

*Or use the Online Show Form  
at [www.cfmsinc.org](http://www.cfmsinc.org)  
(click on Shows)*

### May 9 & 10: RENO, NV

Reno Gem & Mineral Society  
Reno Livestock Event Center  
1350 North Wells Avenue  
Hours: Sat. 10-4; Sun. 10-5  
Steve Norman (775) 358-7322  
[snorm11@hotmail.com](mailto:snorm11@hotmail.com)  
[www.renorockhounds.com](http://www.renorockhounds.com)

### May 9 & 10: ESCONDIDO, CA

Palomar Gem & Mineral Club  
California Center for the Arts  
340 N. Escondido Blvd.  
Hours: Sat. 10-5; Sun. 10-4  
Gayle Hamilton (760) 743-0809  
[gemshow@palomargem.org](mailto:gemshow@palomargem.org)  
[palomargem.org](http://palomargem.org)

### June 6 & 7: GLENDORA, CA

Glendora Gems  
Goddard Middle School  
859 East Sierra Madre  
Hours: Sat. 10-5; Sun. 10-4  
Bonnie Bidwell (626) 963-4638  
[Ybidwell2@aol.com](mailto:Ybidwell2@aol.com)

### June 27 & 28: CULVER CITY, CA

Culver City Rock & Mineral Club  
Veterans Memorial Auditorium  
4117 Overland Blvd. (corner Culver Blvd.)  
Hours: Sat. 10-6; Sun. 10-5  
Janice Metz  
[janicemtz@yahoo.com](mailto:janicemtz@yahoo.com)  
[www.culvercityrocks.org](http://www.culvercityrocks.org)

### August 29 & 30: CONCORD, CA

Contra Costa Mineral & Gem Society  
Centre Concord  
5298 Clayton Rd. (near Ygnacio Rd.)  
Hours: 10 a.m. – 5 p.m. Daily  
Harry Nichandros (925) 289-0454  
[Show-c@ccmgs.org](mailto:Show-c@ccmgs.org)  
[http://www.ccmgs.org/gem\\_show/](http://www.ccmgs.org/gem_show/)

### September 19 & 20: REDWOOD CITY

Sequoia Gem & Mineral Society  
Harvest of Gems & Mineral Show  
1400 Roosevelt Avenue  
Hours: 10:00 a.m. – 5:00 p.m. Daily  
Carol Corden  
[cordencarol@yahoo.com](mailto:cordencarol@yahoo.com)  
[www.sequoiagemandmineralsociety.org](http://www.sequoiagemandmineralsociety.org)

### October 10 & 11: TRONA, CA

Searles Lake Gem & Mineral Society  
SLG&MS Show Building  
13337 Main Street  
Hours: Sat. 7-5 & Sun 7-4  
Jim & Bonnie Fairchild (760) 372-5356  
[slgms@iwvisp.com](mailto:slgms@iwvisp.com)  
[www1.iwvisp.com/tronagemclub/](http://www1.iwvisp.com/tronagemclub/)

### October 11: FALLBROOK, CA

Fallbrook Gem & Mineral Society  
123 West Alvarado Street  
Hours: 9:00 a.m. – 4:00 p.m.  
Fallbrook G&M Society (760) 728-1130  
[fgms@sbcbglobal.net](mailto:fgms@sbcbglobal.net)  
[www.fgms.org](http://www.fgms.org)

### October 17 & 18: PLACERVILLE, CA

El Dorado Mineral & Gem Society  
El Dorado County Fairgrounds  
100 Placerville Drive  
Hours: 10a.m. – 5p.m. Daily  
Karen Newlin (530) 676-2472  
[info@rockandgemshow.org](mailto:info@rockandgemshow.org)  
[www.rockandgemshow.org](http://www.rockandgemshow.org)

### October 24 & 25: LOS ALTOS, CA

Peninsula Gem & Mineral Society  
Los Altos Youth Center  
One No. San Antonio  
Hours: 10 a.m. – 5p.m. Daily  
Steve Jobe (480) 834-5384  
[Steve\\_jobe@sbcbglobal.net](mailto:Steve_jobe@sbcbglobal.net)  
<http://pggs.org/>

### November 7 & 8: ANAHEIM, CA

American Opal Society  
The Phoenix Club  
1340 South Sanderson Avenue  
Hours: Sat. 10-6; Sun. 10-5  
Veronica Purpura (714) 501-9959  
[info@opalsociety.org](mailto:info@opalsociety.org)  
<http://opalsociety.org>

## 2015

### May 1, 2 & 3: LA HABRA, CA

North Orange Co. Gem & Mineral Society  
La Habra Community Center  
101 W. La Habra Blvd.  
Hours: Fri. 4p.m.-8p.m.; Sat. & Sun. 10-5  
Don Warthen (562) 330-8974  
[odwarthen@verizon.net](mailto:odwarthen@verizon.net)  
[nccgms.com](http://nccgms.com)

### May 2 & 3: ANAHEIM, CA

Searchers of Anaheim  
Brookhurst Community Center  
2271 Crescent Avenue  
Hours: Sat. 10-5; Sun. 10-4  
Margaret Hogarth (909) 815-3045  
[Hogarth.m@gmail.com](mailto:Hogarth.m@gmail.com)  
<http://www.searchersrocks.org>

### May 2 & 3: YUCAIPA, CA

Yucaipa Valley Gem & Mineral Society  
call for new location!  
Hours: Sat. 11-7; Sun. 12-4  
Dennis Anderson (951) 845-9195  
[Danderson2@dc.rr.com](mailto:Danderson2@dc.rr.com)  
[www.yvgms.org](http://www.yvgms.org)

### May 2 & 3: JACKSON, CA

Amador County Gem & Mineral  
Kennedy Mine  
off Highways 49 & 88  
Hours: 10-4 Daily  
Gaylene Lichty (209) 245-5388  
[mountaingirl@volcano.net](mailto:mountaingirl@volcano.net)

**YOUR CLUB/SOCIETY  
SHOW COULD BE  
LISTED HERE TOO!!!**

Don't forget to advertise  
your Show in as many  
FREE locations as  
possible!

Local Newspapers  
community & current  
events sections!

Local TV New Stations  
community calendars!

Other Local Shows!

**ADVERTISING YOUR SHOWS**

Be sure to advertise your  
shows in the *Rock & Gem  
Magazine!*

[http://www.rockngem.com/  
showdate-submissions/](http://www.rockngem.com/showdate-submissions/)

*Send the information in early  
so it's published in the  
magazine as well as online.*

**DON'T FORGET TO UP-  
DATE YOUR CLUB  
WEBSITE WITH NEW  
SHOW INFORMATION AS  
SOON AS YOU HAVE  
YOUR NEXT DATE!**

**2015  
FEDERATION SHOWS**

**Eastern Federation  
March 27-29  
Hickory, NC**

**Northwest Federation  
April 10-12  
Ogden, UT**

**Midwest Federation  
May 23-24  
Wheaton, IL**

**California Federation  
June 12, 13 & 14  
Lodi, CA**

**Rocky Mountain  
Federation  
July 16-18  
Cody, WY**

**South Central Federation  
\*\*AFMS Show\*\*  
October 23-25  
Austin, Texas**

**MARK YOUR  
CALENDARS!  
2015 CFMS**

**SHOW**

**&**

**CONVENTION**

**June 12, 13 & 14  
Lodi, CA**



CFMS NEWSLETTER  
PO Box 1657  
Rialto, CA 92377-1657

Pat LaRue, Editor

Return Service Requested

Non-Profit Org  
US Postage  
PAID  
San Bernardino, CA  
Permit No 1290

**CALIFORNIA'S**  
**GOLDEN BEAR**

CALIFORNIA FEDERATION OF MINERALOGICAL SOCIETIES  
**2015**  
**JEWELRY, MINERAL & GEM FESTIVAL**

June 12, 13 & 14, 2015  
10am - 5pm Friday & Saturday  
10am - 4pm Sunday

Lodi Grape Festival & Harvest Fair  
413 East Lockeford Street, Lodi, Ca  
[www.cfmsinc.org](http://www.cfmsinc.org)  
\$6 Adults, Children under 12 Free