



# CFMS NEWSLETTER



## PRESIDENTS MESSAGE

By Jennifer Haley

### A Gem Trail of Society Shows Annual CFMS Shows & Conventions

Sometimes I hear, “why do we have an Annual CFMS Show & Convention, anyway? They are a lot work to produce, and why can’t the CFMS do more of the work?” I hear you.

Each year your society members work hard and looks forward to producing your home society show. As earth science, mineral collectors, lapidary arts and crafts hobbyists, we are very fortunate in having a large family of skilled artisans who willingly volunteer to demonstrate the arts and crafts at all the shows. They enjoy doing the demonstrations, the societies are grateful they’re there. The public and fellow artisans love to sit down to share in conversation, and watch or try their hand at one of the skills.

Always, there is a fascinating educational and beautiful display of rocks, gemstones, minerals, fossils and jewelry, as we open our world for others to see.

We have a large following of dealers who always look forward to our shows, and herds of kids who love to play our kind of games, and go home with a grab bag. These are wonderful annual events, connecting a rock and gem trail to and from every society in the Federation.

Twice a year to meet the CFMS bylaw requirements, Federation Directors representing each society, CFMS officers and chairman, travel to attend the Annual CFMS Show & Convention usually hosted by a society, followed by the Business Meeting in the fall . This is your time as a society to formally meet with fellow representatives of the other member societies, and participate in the review and direction of your Federation. The two banquets a year, one for the annual awards, the other for the installation of officers, are treasured and warmhearted events for everyone. Usually, but not always, the AFMS national show and convention is prior to our Federation’s show and convention. When that occurs, the CFMS chairmen of the various committees involved in the contests, can present the national awards,

our own CFMS contest awards, and scholarship honors to our societies and individuals, at the annual CFMS Awards Banquet.

When the annual AFMS show and convention is held after our annual CFMS show and convention, we aren’t able to announce the national awards until after, but we do present the awards for CFMS’ own contests and scholarship honors.

The variations of when and where the AFMS holds its annual show and convention depends upon the seven federations alternating years when one of their societies hosts the big event. That’s why sometimes it’s a real hustle for our CFMS chairmen, your society editors and chairmen alike, to meet the shorter AFMS contest deadlines, which sometimes are announced with very short notice. Your dedication to making these contests successful for members is to be applauded.

....Continued on p. 3

### On the Inside

Mark Your Calendar.. . . . .	2
CFMS Insurance & Website Contacts. . . . .	2
Donations. . . . .	2
Building a Lapidary First Aid Kit.. . . . .	3
All American Club. . . . .	4
Visual Programs. . . . .	4
CFMS Scholarship Committee. . . . .	5
CFMS Endowment Fund. . . . .	5
Thefts from Shows. . . . .	6
CFMS Rockhound Project H.E.L.P... . . . .	7-8
Promoting Camp Paradise Part 4. . . . .	8
Filing Society Tax Returns. . . . .	9
PLAC–South. . . . .	9
Show Dates. . . . .	10-11
Camp Paradise Application. . . . .	insert
Endowment Fund Donation Form. . . . .	insert

MARK YOUR CALENDAR

Jan 1..... 2018 Dues/Insurance are due  
Mar 1..... dues are delinquent  
Mar 5..... Deadline for April newsletter  
Mar 25-31..... Camp Zzyzx  
April 5..... Deadline for May newsletter

CFMS INSURANCE CONTACTS

McDaniel Insurance Services  
PO Box 1294, Ojai, CA 93024  
Tel (805) 646-9948 or (800) 400-7288  
Fax (805) 646-9976; email: [mcins@west.net](mailto:mcins@west.net)  
Web Site: [www.mcdanielinsuranceservices.com](http://www.mcdanielinsuranceservices.com)

CFMS Insurance Chairman

Mark Nelson  
1475 Paseo Maravilla  
San Dimas, CA 91773-3908  
(909) 986-1784  
[mnelsonair@aol.com](mailto:mnelsonair@aol.com)

CFMS NEWSLETTER SUBSCRIPTIONS

CFMS Newsletter is published 11 times a year by the California Federation of Mineralogical Societies, Inc., PO Box 1657, Rialto, CA 92377-1657. Subscription: \$5.50 per year, January through December.

CFMS WEBSITE

The CFMS website is accessible at [www.cfmsinc.org](http://www.cfmsinc.org) the email for the web site is [cfmswebsite@yahoo.com](mailto:cfmswebsite@yahoo.com). Aitors are invited to download articles for their bulletins from this website.

NOTES FROM THE EDITOR

The deadline for the newsletter is the 5<sup>th</sup> day of the month prior to the month of publication. Articles should be sent to the editor at [bplarue@earthlink.net](mailto:bplarue@earthlink.net). "snail mail"? Please send to the CFMS PO Box 1657, Rialto, CA 92377-1657.

DONATIONS

Donations to any of the funds administered by CFMS and/or AFMS are tax deductible under the rules governing tax exempt organizations which are 501(c)(3). Your cancelled check or receipt is considered to be proof of your donation for purposes of filing your federal tax return. If a personal donation is \$250 or more, a letter attesting to that amount is also required. Member clubs and individuals are encouraged to donate to any of the following:

- CFMS Scholarship Fund
- CFMS Endowment Fund
- CFMS General Fund
- Diedrick Memorial Scholarship Fund
- AFMS Scholarship Foundation
- AFMS Endowment Fund

Your donations should be sent to:

Pat LaRue, Exec. Sec/Treas  
PO Box 1657  
Rialto, CA 92377-1657

Receipts and any supporting documents will be forwarded on to the committee member responsible for acknowledgements. **Please make all checks payable to CFMS or AFMS as appropriate and note the fund in the memo section.**



*President's Message cont...*

Last year we did not have a society volunteer to host this year's show and convention. We had two inquiries from societies to host the show for late fall 2018. We did not receive their letter of proposal to amend the CFMS bylaws in time for you as the Directors to vote upon it in Visalia. The amendment proposed is to have the fluidity to hold what's normally the business meeting in the fall to earlier in the year, so societies whose annual show is in the fall, may have the opportunity to host the annual federation show and convention in keeping with their annual show time.

As you may or may not know, whenever the CFMS hosts its own show and convention, the Federation relies upon the societies to help with some of the preparations and functioning of the event. CFMS does not own its own display cases, so we rely upon societies to loan them for the event. Volunteers are always needed to make grab bags, help with junior activity area, needed donations for silent auctions and Endowment Fund with personnel to help oversee those tables when people need breaks, other areas of activity, sometimes help with set up and take down depending upon the administrative requirements of the facility that's rented. A group effort of societies is always what has made a fun and successful Federation show for everyone all these years.

Currently as I write this, the CFMS Executive Committee is working on producing an event for this year, in replacement of a hosted show. Most likely it has now been formally announced, as you read this, through the CFMS Electronic Communication system. Given the lateness in preparation for this year's annual show and convention, most likely the event will be a convention in tandem with an existing society show later this year.

We highly recommend getting your show bids in early for hosting the 2019, 2020 and future Annual CFMS Show & Conventions.

*Jennifer*



## **BUILDING A LAPIDARY FIRST AID KIT**

by Mark Nelson, EMT - Safety Chairman

Winter will soon be past and we will be out in the field in search of lapidary material. This is the time to make sure that your club's first aid kit is ready!

With a little direction you can make one for your club from materials obtained at your local drug store or on-line supplier. If you group the items in small, clear, slide-lock food storage bags they will be easy to find and store longer. Below is a list of items for a basic first aid kit.

### Personal Protection:

- Nitrile gloves (keep in a zip-lock baggie and have these in the place you will reach for first in the kit, and check them monthly for deterioration).
- CPR mask (the quality kind with a filter in a plastic case).
- Paper face mask.

### Wound care:

- 4" EMS shears to open clothing.
- Plastic syringe with an irrigation tip for rinsing the injury (check a feed and grain supply).
- Tweezers and a small magnifier for removing contaminants.
- An assortment of 4"x 4" gauze dressing pads and adhesive bandages.
- Roller gauze to keep the dressing on the wound.
- 1" Athletic tape and a finger splint.
- Moleskin for blisters.
- Two 5"x 9" instant ice packs.
- Antibiotic hand cleaner.
- Foil (space blanket) rescue blanket
- Saline solution for eye rinse.
- Bottled water for wound cleaning.
- A sterile, bagged cloth.
- Small trash bags for disposing of contaminated materials.

### Muscle or bone injuries:

- Compression wraps. Sports-style wrap, self-adhering, 3" x 5 Yds, for supporting ankles or knees.
- Moldable aluminum-foam splint, 4.25" x 36" such as made by SAM or EMI.
- (2) triangular bandages (slings & wraps).

### Medication (non-prescription):

- Ibuprofen and acetaminophen in bottles with a few

grains of rice to keep them from getting stuck to each other.

- Antacids such as calcium carbonate.
- Anti-diarrheals such as Pepto Bismol or other medication containing loperamide.
- Antihistamines for allergic reactions.
- First Aid Antibiotic Ointment (Polysporin).

General:

- EMS shears.
- LED flashlight. Remove the batteries and put the light and batteries in a zip-lock bag.
- An easy-to-understand first aid handbook, such as the American Red Cross First Aid and Safety Handbook or the Field Guide of Wilderness & Rescue Medicine.
- A small notebook with pencil and the number of the Poison Control Center (1-800-222-1222 in California) is also helpful.

The items should be grouped in slide-lock food bags and in a "kit bag" with compartments that will keep things in place and easily found in case of an emergency (you don't want to have to dump it out on the ground in a blowing wind). You can start with just a backpack or sports bag. Several companies make good medical bags. I'm familiar with those made by Emergency Medical International. If you do an internet search for "EMI Medical Response Bag" you will see a spectrum of bags and kits. The 35 W.W. Grainger offices in California sell the EMI Trauma bag for \$75.50 in navy (#8RHE1) or orange (#9MHX9). Your club may want to ask a local ambulance company to donate one and put their name on an embroidered name strip on the bag as the donor.

Personal Kits: All field trip members should be encouraged to have a "fanny" pack with personal first aid items. This pack should include extra doses of their prescription medications, such as for pain, heart, blood pressure, asthma inhalers, epinephrine, nitroglycerine and albuterol in case they are out longer than expected or hospitalized away from home.

Also: Aloe vera, throat lozenges, lip balm, sun screen, insect repellent, contact lens solution, Rx & safety glasses, band aids, 3" gauze pads, feminine hygiene products, aspirin, polysporin, tweezers, safety pins, sewing kit, duct tape and wire zip ties.

**DUES ARE DUE!!!**



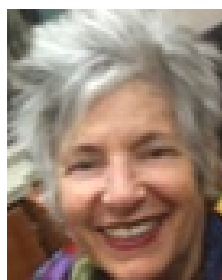
## ALL AMERICAN CLUB

By Ofelia Warthen, Chairman

Hello Everyone! Many Thanks to all CFMS Societies that submitted their "2017 All

American Club Awards" Entries. All entries have been submitted to our CFMS for Judging, thereafter sent to AFMS for their judging. We will await the award results after the Eastern Federation AFMS Show at Raleigh, NC, April 6-8. Believe me, everyone is a Winner!

- I want to comment our Societies that have suffered disasters in fires and flood areas that took time to submit their entries. This shows great dedication, respect and pride promoting the great love for our earth science hobby. Hugs to all participants. There must be love somewhere that energizes & inspire us to do this. HAPPY VALENTINES DAY!



## VISUAL PROGRAMS

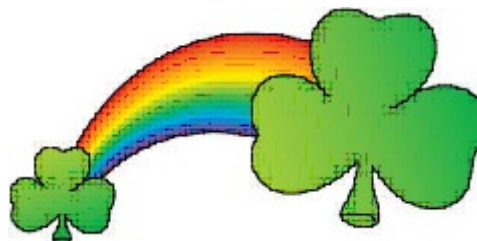
By Sharon Rogow

2018 has started off with a lot more requests. We are pleased that more clubs are making use of our library of visual programs.

Reminders:

1. Submit requests 2 to 3 weeks in advance.
2. Return programs within 10 of use with the \$10 fee and feedback form.
3. Feel free to contact me for assistance in choosing programs and the process of uprograms.
4. Access the CFMS web site and click on Visual Programs along the left side which will take you to the request form and the listings.
5. Contact me for help.

[Sharonrr@cox.net](mailto:Sharonrr@cox.net) (702) 499-0272





## CFMS SCHOLARSHIP COMMITTEE

By Marcia Goetz, 2<sup>nd</sup> VP

The purpose of this committee is to encourage our societies to choose a person or couple to have the honor of choosing a university within the state of California, Hawaii, or Nevada to give a \$2,000 scholarship to one of its students majoring in earth sciences to jewelry arts. Talk about a wonderful thing for a society to do. This can be an enjoyable and easy task and for ease of choosing a university CFMS has prepared a list of approved accredited universities. The funding for our scholarships are from interest in a scholarship fund. The funds come from donations made by CFMS societies and individuals.

From 1969 and 1972-2015 there has been an "CFMS Scholarship Honoree" to choose a university. This last year the Pasadena Lapidary Society nominated Ed Imlay for the award for year 2018. Pasadena Lapidary Society chose Ed Imlay for his dedication for educating its lapidary members with displays and identification of rock and minerals at meetings. Ed also made visits to schools and scouts to educate them on general geology. At the workshop Ed teaches on cabbing for new members and demonstrates wire wrap and jigs. The annual show has benefitted through Ed's organizing the demonstration area for the public to see what lapidary is all about.

Ed Imlay decided he wanted to have the student be from the California Institute of Technology (Caltec) in Pasadena CA. The student selected is Sarah Crucilla who is studying Geology. Evidently, Sarah will be writing a short article for the CFMS Newsletter in the future and we will be looking forward to reading it.

Does your society have a member you would like to nominate for their dedication to education in your society for 2019? The nominee should strive to the goals and purpose of CFMS. The objective and purpose of the California Federation of Mineralogical Societies is to disseminate knowledge of mineralogy and the earth sciences and to encourage study in these subjects through various ways. Guidelines for nominating a CFMS Honoree are: the individual or couple must not be aware that their name is being considered; should have helped further the knowledge and skills of rockhounds and the Earth Sciences to societies as well as individuals; need not be a member of a CFMS society; the honoree may receive this honor only once.

The other scholarship fund CFMS manages is the Robert O. Diedrich Memorial Scholarship Fund which provides a \$2,000 scholarship to aid deserving students in the field of Mineralogy and related Earth Sciences. The awardees of this scholarship may only attend UC Berkeley or Stanford University and be in need of financial assistance. The student should be about to enter their junior or senior year of undergraduate study, majoring in and intending to pursue a career in Earth Sciences and maintaining a minimum grade point average of 3.0 in required studies. We contact the school and ask if there is a student that meets the requirements; the university gives us the student's name and validation that the student meets our requirements.

Donations to the CFMS Scholarship Fund may be made in the form of money, or any other form acceptable to the Scholarship Committee. Checks should be made payable to the CFMS Scholarship Fund and sent to: Pat LaRue, CFMS Exec Sec/Treas P. O. Box 1657 Rialto, CA 92377-1657.

Please send your society's nominee to:

Marcia Goetz  
755 W. Dike St.  
Glendora, CA 91740  
[joenmarl@verizon.net](mailto:joenmarl@verizon.net)

---

## ENDOWMENT FUND

By Sharon Rogow, Chairman

We are currently looking for donations of rocks, lapidary, finished jewelry and rock related items for the Endowment Fund table at future events.

Many donated in past years and we hope that you and even more people will support this important Fund by making additional tax deductible donations. Contact me via text, email or phone.

[sharonrr@cox.net](mailto:sharonrr@cox.net)  
(702) 499-0272



## **THEFTS FROM SHOWS**

by Mark Nelson, Insurance Committee Chair

The September 10<sup>th</sup>, 2017 break-in at the Fallbrook Gem & Mineral Society's museum resulted in the loss of significant tourmaline specimens along with other minerals and gems. We hope that these will be recovered and the thieves caught and imprisoned. This sort of criminal activity serves to bring us to mind of how we can better protect our shows and displays.

From my own experience with various hobby-related shows, there are people who look upon shows and displays as an opportunity to enrich themselves at the expense of others! At each of the various rock and gem shows, the host societies must recognize the need for security personnel to help deter thefts both during the show hours as well as after-hours. While the most common incidents may involve the 5-finger-discount (that is, the theft of one-or-more items from a dealers table during a show), there seems to be an increasing number of thefts and burglaries that occur before and after show hours. These thefts occur at the show premises as well as from hotel and motel rooms, vehicles and trailers. In addition to the theft at Fallbrook, we know of instances in the recent past where thieves gained access to the dealers area of shows after hours by breaking windows. Even if the buildings are locked at night, host societies should consider having a night-guard actually occupy the building during such times.

Clearly, vendors need to purchase their own insurance coverage – as the host societies are not financially responsible for such losses. In addition to insurance protection, what preventive measures can be taken?

Consider the following:

- Securely lock vehicles/trailers/motel rooms.
- Do not leave items in vehicles.
- Whenever possible, place items in the trunk of a car instead of in the passenger compartment where they are visible to passers-by.
- Park in well-lit areas when loading and unloading vehicles.
- Don't leave the vehicle unlocked and unattended, even for a short period of time.
- Engrave some sort of identification in or on large items so that they can be returned if recovered by the police.

I hope this helps!

As the year progresses, societies will be holding shows, displays, meetings and workshops. We have excellent insurance to protect our club and the building owners for activities that we host. Our website – [www.cfmsinc.org](http://www.cfmsinc.org) – contains a wealth of information regarding the Federation's insurance program including the forms to be completed when your society has a need for a Certificate of Insurance for shows, meetings, workshops and the like. As long as the function does not involve more than 500 participants, there is no charge for having McDaniel Insurance Services issue the proper documents. Please be sure that your club applies for liability insurance coverage at least a month prior to the show!

If you need to report a claim, do so as soon as possible to Patt McDaniel at (800) 400-7288.

If I can assist you or answer any questions, please feel free to contact me!

Mark Nelson

Phone: (909) 592-1322

E-Mail: [mnelsonair@aol.com](mailto:mnelsonair@aol.com)

Mailing Address: 1475 Paseo Maravilla, San Dimas CA 91773-3908



Sunset at Quartzsite  
John Martin photo

## Rockhound Project H.E.L.P.

(Help Eliminate Litter Please)

Dear Societies,

There were many things that really impressed me when I joined my first rock & gem club years ago. One of them was about the “goodness” the member’s commitment was to the AFMS Code of Ethics which the members eagerly lived up to and taught to those who were new. Especially the one; **I will support the rockhound project H.E.L.P. (Help Eliminate Litter Please) and will leave all collecting areas devoid of litter, regardless of how found.** Wherever our club went for a field trip, we always picked up after ourselves and after those who had come before us who hadn’t. From paper trash, broken bottles and gun shells, we picked it up and packed it out. Some of what was one person’s trash surprisingly became some good looking jewelry, like cutting and polishing that local rock material into a bullet shaped cab to fit into a gun shell case for a pendant or melting down the same metal to make miniature sculptures to fit into geodes.

It is puzzling why some people think it’s ok to dump trash out on the desert, drop it in the woods and on beaches and other public lands. You name it, it’s out there, more in some areas than in others. I guess they don’t value that these are our Public Lands we all share.

As your Federation’s President this year, I am encouraging members of each society that can, to help by participating in at least one clean up per year. Not only will it benefit our relationships with BLM and other public land agencies, but will help keep the public lands that have been so good to us, beautiful. Doing so will also add to the stature and public image of Rockhounds everywhere. What could be better!

Whether you combine a cleanup with a collecting trip or you plan a cleanup on its own, here are some tips John Martin (CFMS PLAC chairman) and I have cultivated so your efforts are easily successful, and your society is acknowledged for its efforts.

### **Suggestions of locations for Rockhound Project H.E.L.P.:**

The convenience of knowing where your society can plan for a cleanup is easy. You can contact the BLM, State Parks, National Wilderness, Wildlife Refuges, State and local recreational areas, campgrounds, even your local town park. *At this time, the Hauser Geode Beds do not require a clean-up. John and Susy Martin and Dick Pankey checked out the area this month and the area was clean as a whistle.*

### **How to organize and plan for a Project H.E.L.P. on Public Land**

1. First contact the local authority’s office in charge of where you would like to do a cleanup or inquire where they would suggest it is needed. Introduce yourself as a member representing your society and the Rockhound community. You can even tell them about Project H.E.L.P.

They will need advance notice of when you are planning your cleanup, sometimes up to 3 to 6 weeks, which is usually the case with the larger agencies such as BLM. They need to clear their schedule so they can be there to get you started.

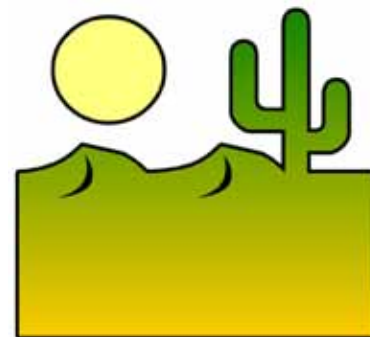
Often, they can assist you with garbage bags and litter picks, and will tell you where to leave the filled bags, old tires, etc, when you are done. *Remember, that those rusty tin cans in the desert are considered historical artifacts by public lands and need to be left where you see them.* Attached with this letter is a copy of what Public Lands considers as collectable. It never hurts to review this with your members each year.

### 2. Arrive Prepared

- Have your society members bring a pair of gloves with them. Most volunteers like wearing the disposable gloves so they can toss them in with the trash after they are done. The gloves come in multiple pairs in a package, and can be found at hardware and drug stores just about anywhere.
- As on any field trip, make sure members bring adequate drinking water, snack food, appropriate clothing, hat and have a first aid kit available.
- Don’t forget to take a group photo with the bags of trash! You’ll want to use the photo for your society scrapbook and bulletin. Your field trip leader will need to send a copy of the photo to one of the CFMS Field Trip Chairmen that is closest to your neck of the woods, so the Federation can document the Rockhound Project H.E.L.P.

Your commitment to this project will not only help fulfill our commitment to Project H.E.L.P., but you’ll also become the public ambassadors for our recreational hobby, and an inspiration to the societies in other federations to do their part too. In turn the name Recreational Rockhounding and Rockhounds will be more widely known. What could be better!

*Jennifer*



**CFMS ROCKHOUND PROJECT H.E.L.P.  
(HELP ELIMINATE LITTER PLEASE)**

Form for Cleanups Accomplished

Name of Society:

-----

Field Trip Leader's Name:

-----

Their Email and Phone Number:

-----

Location and Date of Cleanup:

-----

-----

(If this is combined collecting trip with a cleanup, please tell us what the rock, mineral or fossil material is that you enjoy collecting there)

-----

-----

Public Lands Office, City Hall, etc., that you contacted to make arrangements: \_\_\_\_\_

-----

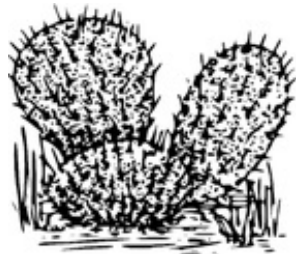
-----

\*\*\*\*\*

Please forward this information to one of the CFMS Field Trip Chairmen:

- Jim Barton: Field Trips-North [geologist1@surewest.net](mailto:geologist1@surewest.net)
- Roy Isaac: Field Trips-South Co-Chair [lbionicdj@gmail.com](mailto:lbionicdj@gmail.com)
- Adam Dean: Field Trips-South Co-Chair [theagatehunter@verizon.net](mailto:theagatehunter@verizon.net)

*Thank you on behalf of our federation by helping with Rockhound Project H.E.L.P.  
Keeping our Public Lands beautiful, and by furthering the public image and stature of Rockhounds everywhere.*



**PROMOTING CAMP PARADISE**

Part 4

By Jill Atkins, Camp Attendee

Last month I told you about silversmithing. It is located just inside the barn door on the right. Walking past beginning silversmithing and advanced silversmithing you come to Jo, who teaches Ming Trees. {Jo is hilarious and very kind. She is also Tom's (lapidary guy) Mom.} You might ask, "What does Ming Trees have to do with jewelry?" I'll tell you. Not all the jewelry arts are about necklaces and bracelets. I think you could talk to a guy named Faberge'...if you talk to the dead. He was a wonderful jeweler but you couldn't wear his eggs 'round your neck. Jo will teach you how to create trees from wire, stones, rocks, cement and you will walk away amazed that you made such a wonderful thing. Each year I try to make one tree and now have a virtual forest.

Beyond the trees though, is also the ability to make necklaces and brooches. See where I'm going here? She expands the realm of possibility. For those of you who have children this is a great project to take home to them so they too can explore possibilities.

The next section past Jo is bead making. Some of you work with beads...this class, taught by Barbara, (a funny gal if ever there was one and very helpful) shows you how to make the beads. Rods of colored glass melted by the flame from your torch create a story not yet told. As do most of the instructors, Barbara has tools and supplies for sale so you can continue your journey into bead making when you return home. Barbara has whimsical dogs and cats that she makes from glass. What will you be known for in your own bead making? Flowers, people, mermaids, cylinders...the sky's the limit...really, I don't think you can make a sky but maybe you can!

I hope you can join me next month on this journey of exploring Camp Paradise. Keep saving that \$40.00 every month.







## PREPARING TO FILE SOCIETY TAX RETURNS

By Linda Nelson, CPA – FAC  
Chair

It's not too early to begin thinking about filing your society's 2017 tax return. Most nonprofit tax-exempt organizations are required to file annual tax returns with the IRS. Even though most tax-exempt nonprofit organizations do not pay federal taxes (that is what "tax-exempt" means), most do have to file an informational return with the IRS. This annual reporting return is called a Form 990.

If you are a non-profit organization with gross receipts of \$50,000 or less it has never been easier! The IRS knows that you won't be paying taxes – only filing a return. Therefore they have prepared simple forms for filing your return. The forms for filing a non-profit tax return that affect most CFMS members are: Form 990-N (E-Postcard) or 990-EZ. These must be filed by the 15th day of the 5th month after the end of your organization's accounting period. Thus, for a calendar year taxpayer, Form 990-N or 990-EZ is due May 15 of the following year. If your fiscal year end is May 31<sup>st</sup>, your filing date is October 15<sup>th</sup>.

The Form 990-N electronic-filing system became part of the IRS.gov website in February 2016. All filers must register at IRS.gov prior to filing their next Form 990-N. This is a one-time registration; you won't be asked to register again when filing next year. Form 990-N must be completed and filed electronically. There is no paper form. Form 990-N filers may choose to file a complete Form 990 or Form 990-EZ instead. I recommend that societies use the Form 990-N Electronic Filing System (e-Postcard). There is a User Guide to help with registering and filing.

An organization that fails to file the required information return (Form 990 or Form 990-EZ) or e-Postcard (Form 990-N) for three consecutive tax years will automatically lose its tax-exempt status. To be reinstated requires not only a lot of time and paperwork – but costly filing fees.

Information and links to the "postcard" can be found at [www.irs.gov](http://www.irs.gov) and [www.ftb.ca.gov](http://www.ftb.ca.gov). I do a lot of work with non-profit organizations. Contact me at <lnelsoncpa@aol.com> if I can provide any help or answer any questions.

## PLAC REPORT

by Lisbet Thoresen, CFMS PLAC-South

**Here we go again...DRECP do-over will give lands designated for recreational uses to industrial-scale projects**

**BLM notice of intent (2/2/2018):** Docket Number 2018-02098

**What it proposes:** Amend DRECP to seek greater opportunities for renewable energy generation

**Where to find it:**

<https://www.federalregister.gov/d/2018-02098>

**Comment period deadline:** 3/19/2018

After a bruising 8-year battle and 16,000+ comment letters later, the **Desert Renewable Energy Conservation Plan (DRECP)** is in full implementation and on pace to fast-track permits for 500 renewable energy projects over the next 10 years. Apparently, that's not enough for Industry advocates. After less than 18 months, **BLM** will consider rewriting **DRECP** to give Industry lands set aside for conservation and recreation, including hobby collecting. Some of these lands were originally designated for development in the **Draft DRECP**, but after receiving numerous detailed comment letters from Rockhounds, they were re-designated to accommodate hobby collecting in the final **Record of Decision** (9/14/2016).

BLM opened a 45-day comment period on February 2, 2018. To ensure that access to collecting areas is not lost to industrial projects Rockhounds must reiterate anew their concerns to BLM by the comment period deadline on March 19, 2018.

If you or your club would like to sign a joint letter to support hobby collecting, contact [editor@sdmg.org](mailto:editor@sdmg.org) for more information.

**More about DRECP & Why it matters to Rockhounds:**

<https://goo.gl/ZrY6iS> (short URL) or see: [http://www.sdmg.org/articles/201802/201802\\_BLM\\_giv\\_es\\_Industry\\_chance\\_to\\_lay\\_claim\\_to\\_Calif\\_deserts.pdf](http://www.sdmg.org/articles/201802/201802_BLM_giv_es_Industry_chance_to_lay_claim_to_Calif_deserts.pdf)

**CFMS SHOW DATES**

*Shows and Events*

*Sponsored by  
CFMS Clubs & Societies!*

*Please submit your  
Show or Event as soon as possible  
to receive maximum advertising value!*

*Email or mail to:  
SHOW DATES*

*Use the Online Show Form  
at [www.cfmsinc.org](http://www.cfmsinc.org)  
(click on Shows)*

*You should receive a confirmation  
within 5 days after submitting your  
Show Date information!*

**2018**

March 2-11, Imperial, CA  
Imperial County Gem & Mineral Society  
California Mid-Winter Fair & Fiesta  
200 East Second St  
Hours: Fri 12pm-11pm, Sat 12pm-11pm, Sun  
12pm-11pm, Mon 4pm-11pm, Tue 4pm-11pm,  
Wed 4pm-11pm, Thurs 4pm-11pm, Fri  
4pm-11pm, Sat 12pm-11pm, Sun 12pm-11pm  
Contact: John Pyle Jr., 760-562-3453  
Website: [www.ivgms.org](http://www.ivgms.org)

March 2, 3, 4, Newark, CA  
Mineral & Gem Society of Castro Valley  
Newark Pavilion  
6430 Thornton Ave  
Hours Fri. & Sat. 10-6, Sun. 10-5  
Contact: Cathy Miller, 510-887-9007  
Email: [showchair@mgscv.org](mailto:showchair@mgscv.org)  
Website: [info@mgscv.org](mailto:info@mgscv.org)

March 3-4, Arcadia, CA  
Monrovia Rockhounds  
Los Angeles Co Arboretum and Botanic Garden  
301 Baldwin  
Hours: 9-4:30 Daily  
Contact: Jo Anna Ritchey 626-359-1624  
Email: [joannaritchey@gmail.com](mailto:joannaritchey@gmail.com)  
Website: [www.moroka.com](http://www.moroka.com)

March 3-4, Torrance, CA  
South Bay Lapidary and Mineral Society  
Ken Miller Recreation Center  
3341 Torrance Road (entrance on Madrona)  
Hours: Sat 10-5, Sun 10-4  
Contact: Nancy Pekarek, 310-257-8152  
Email: [pekareks@hotmail.com](mailto:pekareks@hotmail.com)

Website:  
[southbaylapidaryandmineralsociety.com](http://southbaylapidaryandmineralsociety.com)

March 3-4, Ventura, CA  
Ventura Gem & Mineral Society  
Ventura County Fairgrounds  
10 W Harbor Blvd  
Hours: Sat 10-5, Sun 10-4  
Contact: Diane Cook, 805-312-8467  
Email: [info@vgms.org](mailto:info@vgms.org)  
Website: [www.vgms.org](http://www.vgms.org)

March 9, 10, 11, Victorville, CA  
Victor Valley Gem and Mineral Society  
Tailgate: 7 miles E of Dale Evans Pkwy  
Stoddard Wells Rd  
Hours: 9-5 daily  
Contact: Brett Ward/Sandy Skidmore  
760-617-6001  
Email: [san2744@aol.com](mailto:san2744@aol.com)  
Website: [vvgmc.org](http://vvgmc.org)

March 10-11, San Marino, CA  
Pasadena Lapidary Society  
San Marino Masonic Center  
3130 Huntington Dr  
Hours: Sat 10-6, Sun 10-5  
Contact: Ellen Ferrell, 727-512-0381  
Email: [ellenbf2007@aol.com](mailto:ellenbf2007@aol.com)  
Website: [pasadenalapidary.org](http://pasadenalapidary.org)

March 10-11, Spreckels, CA  
Salinas Valley Rock & Gem  
Spreckels Vet's Memorial Hall  
5<sup>th</sup> & Llano Streets  
Hours: 10-5  
Contact: Gary Beck, 831-679-2896  
Email: [garybeckpca@yahoo.com](mailto:garybeckpca@yahoo.com)  
Website: [salinasrockandgem.pagecloud.com](http://salinasrockandgem.pagecloud.com)

March 10-11, Turlock, CA  
Mother Lode Mineral Society  
Stanislaus County Fair Grounds  
900 North Broadway  
Hours: 10-5 daily  
Contact: Bud & Terry McMillin, 209-484-4416  
Email: [terry.mcmillin@yahoo.com](mailto:terry.mcmillin@yahoo.com)  
Website: [www.motherlodemineralsociety.com](http://www.motherlodemineralsociety.com)

March 17-18, Lemoore, CA  
Lemoore Gem & Mineral Club  
Lemoore Trinity Hall  
470 Champion Street  
Hours: Sat 10-6, Sun 10-4  
Contact: Chris Wertenberger, 559-309-  
3433  
Email: [kim-morrell@hotmail.com](mailto:kim-morrell@hotmail.com)  
Website: Facebook: Lemoore Gem and Mineral Club

March 17-18, San Jose, CA  
Santa Clara Valley Gem & Mineral Society  
Santa Clara County Fairgrounds  
344 Tully Rd  
Hours: 10-5  
Contact: Sonia Dyer, 408-629-5735  
Email: [Sonia.dyer@sbcglobal.net](mailto:Sonia.dyer@sbcglobal.net)  
Website: [www.scvgms.org](http://www.scvgms.org)

March 24-25, Angels Camp, CA  
Calaveras Gem and Mineral Society  
Calaveras County Fairgrounds  
101 Frogtown Rd  
Hours: Sat 10-5, Sun 10-4  
Contact: Robin Williams, 209-728-8277  
Email: [robinski@yahoo.com](mailto:robinski@yahoo.com)  
Website: [calaverasgemandmineralsociety.org](http://calaverasgemandmineralsociety.org)

March 24-25, Roseville, CA  
Roseville Rock Rollers Gem and Mineral Society  
Placer County Fairgrounds  
800 All American Blvd (off Washington)  
Hours: Sat 10-5, Sun 10-4  
Contact: Gloria Marie, 916-216-1114  
Email: [gloriarosevillerockrollers@gmail.com](mailto:gloriarosevillerockrollers@gmail.com)  
Website: [www.rockrollers.com](http://www.rockrollers.com)

April 6-8 Vista, CA  
Vista Gem and Mineral Society  
Vista Antique Gas and Steam Engine  
Museum  
2040 N. Santa Fe (Museum Way)  
Hours: 9-5 Daily  
Contact: Kelly Hickman, 760-622-6501  
Email: [kellyahickman@hotmail.com](mailto:kellyahickman@hotmail.com)  
Website: [www.vistarocks.org](http://www.vistarocks.org)

April 7 – 8, Mariposa, CA  
Mariposa Gem & Mineral Society  
Mariposa County Fairgrounds  
5007 Fairgrounds Road (South of Mariposa  
off Hwy 49)  
Hours: Sat 10 - 5; Sun 10 - 4  
Contact: Meredith Meehan, (559) 868-3535  
Email: [mgmcm@sti.net](mailto:mgmcm@sti.net)  
Website: [mariposagemclub.org](http://mariposagemclub.org)

April 21-22, Newbury Park, CA  
Conejo Gem & Mineral Club  
Borchard Park Community Center  
190 Reino Rd & Borchard Rd  
Hours: Sat 10-5; Sun 10-4  
Contact: Chuck Borchart, 805-551-9946  
Email: [borchart@gmail.com](mailto:borchart@gmail.com)  
Website: [www.cgamc.org](http://www.cgamc.org)

## CFMS Newsletter March 2018

April 21-22, Paso Robles, CA  
Santa Lucia Rockhounds  
Paso Robles Event Center  
2198 Riverside Ave  
Hours: Sat 10-5, Sun 10-4  
Contact: Tina Clark, 805-305-0246  
Email: [srockhounds.org](mailto:srockhounds.org)

April 28- 29 Lancaster, CA  
Antelope Valley Gem & Mineral Club  
Lancaster High School  
44701 -32<sup>nd</sup> Street West  
Hours: 10-5 daily  
Contact: Susan Chaisson-Walblom 661-406-0143  
Email: [slchaisson@yahoo.com](mailto:slchaisson@yahoo.com)  
Website: [www.avgem.weebly.com](http://www.avgem.weebly.com)

April 28-29, Reno, NV  
Reno Gem & Mineral Society, Inc.  
Reno/Sparks Livestock Events Center  
1350 N Wells Ave.  
Hours Sat 10-5, Sun 10-4  
Contact: Daniel Ellis, 775-229-2442  
Email: [saliondan55@aol.com](mailto:saliondan55@aol.com)  
Website: [www.renorockhounds.com](http://www.renorockhounds.com)

May 5- 6: Jackson, CA  
Amador County Gem & Mineral Society  
Kennedy Mine  
12594 Kennedy Mine Rd (off Hwy 49/88)  
Hours: 10 - 4 daily  
Contact: Cheryl Smith, (209) 296-4061  
Website: [www.amadorgemandmineral.org](http://www.amadorgemandmineral.org)

June 8-10, La Habra, CA  
North Orange County Gem & Mineral Society  
La Habra Community Center  
101 W La Habra Blvd  
Hours: Fri. 5-8, Sat & Sun 10-5  
Contact: Armando Pedroza 909-444-2727  
Email: [forestandSUN@yahoo.com](mailto:forestandSUN@yahoo.com)  
Website: [www.nocgms.com](http://www.nocgms.com)

June 9-10, Escondido, CA  
Palomar Gem and Mineral Society  
California Center for the Arts Escondido  
340 N Escondido Blvd  
Hours: 10-5 Daily  
Contact: Michele Shephard  
Email: [pgmcshow@palomargem.org](mailto:pgmcshow@palomargem.org)  
Website: [www.palomargem.org](http://www.palomargem.org)

June 23-24, Culver City, CA  
Culver City Rock and Mineral Club  
Veterans Memorial Auditorium  
4117 Overland Ave.  
Hours: Sat 10-6, Sun 10-5  
Contact: Janice Metz. 310-850-4398  
Email: [janicemtz@yahoo.com](mailto:janicemtz@yahoo.com)  
Website: [www.culvercityrocks.org](http://www.culvercityrocks.org)

September 15-16, REDWOOD CITY, CA  
Sequoia Gem & Mineral Society  
Harvest of Gems and Mineral Show  
1400 Roosevelt Ave  
Hours: 10-5 Daily  
Contact: William Spence, 408-398-7502  
Email: [bill.spence777@sbcglobal.net](mailto:bill.spence777@sbcglobal.net)  
Website:  
[www.sequoiagemandmineralsociety.org](http://www.sequoiagemandmineralsociety.org)

October 13-14, Trona, CA  
Searles Lake Gem & Mineral Society  
Searles Lake Gem & Mineral Society Bldg  
13337 Main Street  
Hours: Sat 7:30-5, Sun 7:30 -4  
Contact: Jim & Bonnie Fairchild 760-372-5356  
Email: [slgms@iwvisp.com](mailto:slgms@iwvisp.com)  
Website:  
[www.iwvisp.com/tronagemclub](http://www.iwvisp.com/tronagemclub)

**National/Regional Shows:**  
2018 –When details are available

*AFMS/Eastern Federation*  
*April 4-8*  
*Hosted by Tar Heel Gem & Mineral Club*  
*Kerr Scott Building*  
*Blue Ridge Road*  
*New Raleigh, NC*  
<http://www.amfed.org/>

*California Federation*

*Midwest Federation*  
Hosted by Lincoln Orbit Earth  
Science Society,  
Springfield, Illinois  
October 2018

*Northwest Federation*  
Hosted by Yakama GMC  
"Parade of Gems"  
State Fair Park: Modern Living  
Building & Pioneer Hall  
1301 S Fair Ave  
April 27, 28, 29  
Hours: Fri, Sat 10-6 daily; Sun 10-4  
Yakama, WA  
Website:  
<http://northwestfederation.org/FederationShow.asp>

*Rocky Mountain Federation*  
Hosted by Western Dakota Gem and Mineral Society  
Rushmore Civic Center  
444 Mount Rushmore Road  
July 20, 21, 22, 2018  
Rapid City, SD  
Website:  
<http://rmfms.org/conventions>  
*South Central Federation*

SCFMS Convention  
Hosted by Lubbock G&MS  
Lubbock Memorial Civic Center  
8233 Will Clayton Pkwy  
May 5-6, 2018  
Lubbock, TX  
<http://www.scfms.net/show>

Southeast Federation  
SFMS Executive Meeting Information  
March 9-10, 2018  
Hosted by Aiken Gem, Mineral and Fossil Society and Augusta Gem and Mineral Society

---

---

**DON'T FORGET TO UP-DATE  
YOUR CLUB WEBSITE WITH  
YOUR NEW SHOW DATE**

### REMINDER

Advertise your Show in as many Free locations as possible!

1. Local newspapers
2. Current events sections!
3. Local TV stations,
4. Community calendars!
5. Other Local Shows

**Advertise your shows in the *Rock & Gem Magazine!***  
[www.rockngem.com/showdate-submissions/](http://www.rockngem.com/showdate-submissions/)  
**Send the information in early so it's published in the magazine as well as online.**

Camp Paradise application not available in online newsletter due to formatting issues. Please download from the CFMS website when available.

THE CALIFORNIA FEDERATION OF MINERALOGICAL SOCIETIES

ENDOWMENT FUND

Founded June 28, 1987 by CFMS Directors in Convention, Turlock, California

The CFMS Endowment Fund was formed to provide a stable source of income to financially assist the programs and services the CFMS provides to its members. All donations remain as principal and only earnings are available for distribution to the CFMS. The Fund is open to receive most types of assets. (Non-cash items will be converted to cash as is prudent. Donating appreciated assets offers a charitable tax deduction without Capital Gains Tax).

Fund Categories:

Patron Society: A Society or Club having donated \$100 plus \$1 per member is given special recognition on a Patron Honor Plaque that is on display during CFMS shows and other events.

Patron: A person (may be a couple) having donated \$100 or more. Also has name(s) posted on the Patron Honor Plaque and receives a Booster Pin.

Booster: A person having donated \$25 to the Fund. The Booster pin, which was designed by Chuck Davis, is given to any person upon donating \$25 to the Fund.

The Endowment Fund benefits the now generation and generations to come. Join in and support the Earth Sciences by sending in your check or pledge in support of the CFMS Endowment Fund.

-----Cut here and mail with check or pledge-----

Here is my Check to the CFMS Endowment Fund for:

\$5\_\_\_ \$10\_\_\_ \$15\_\_\_ \$20\_\_\_ \$25\_\_\_ \$50\_\_\_ \$75\_\_\_ \$100\_\_\_ or \$\_\_\_\_\_

Pledge to donate \$\_\_\_\_\_ by December 31, 2018 or \$\_\_\_\_\_ by \_\_\_\_\_

Donation is \_\_\_ Individual \_\_\_ A Memorial For:\_\_\_\_\_

Name:\_\_\_\_\_ Phone (\_\_\_\_) \_\_\_\_\_

Address: \_\_\_\_\_

Mail to: Pat LaRue
P.O. Box 1657
Rialto, CA. 92377-1657

All gifts to the CFMS Endowment Fund are tax deductible as allowed by law



**CFMS NEWSLETTER**

PO Box 1657

Rialto CA 92377-1657

Pat LaRue, Editor

Return Service Requested

Non-Profit Org  
US Postage  
PAID  
San Bernardino, CA  
Permit No 1290