



CFMS NEWSLETTER

Vol LIX #8

August 2022



PRESIDENT'S MESSAGE

By Jim Barton

Hi Rockhounds,

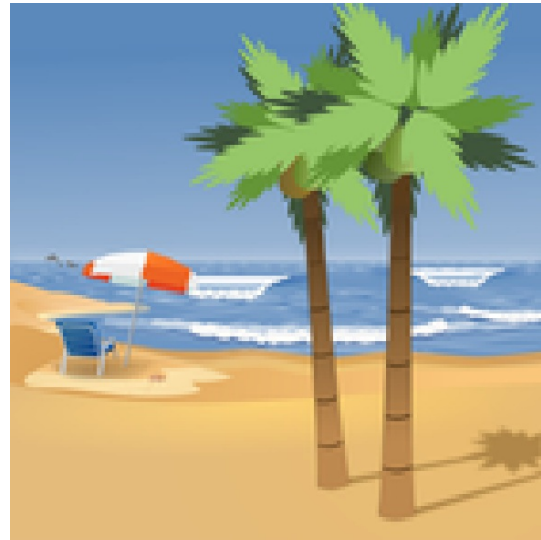
Independence Day has come and gone, and we continue to enjoy our freedoms as the result of others who gave us theirs. May we always be the land of the free and the home of the brave. Our next CFMS meeting is November 12, 2022 in Visalia.

As a reminder, Marcia Goetz, Past President and Electronic Communications Chair is currently emailing the CFMS Newsletter to Societies/Clubs CFMS Directors, CFMS Officers and CFMS Chairs and would like to also include all Society Editors and/or Membership Chairs for distribution to all members with email addresses. Please contact Marcia Goetz at marciagoetz@gmail.com with your editor's or membership chair's email contact information.

As stated previously in my messages, individual CFMS Committees are being highlighted to show what CFMS does for the membership. The Insurance Chair is responsible for providing communication from our insurance provider and answering questions concerning coverage for societies. Please contact Pat LaRue or myself for the password to the website for committee chairs.

I am looking forward to attending the first day of Camp Paradise this year as your president. See you there.

Jim Barton



On the Inside

Mark Your Calendar.....	2
CFMS Insurance & Website Contacts.	2
Donations.....	2
Jr Activities.	3
CFMS Fall Business Meeting.....	3
Camp Paradise.	4
Nominating Committee Report.....	4
Looking for a Program.	4
Safety-WTF.....	5
"Nipper Mounts".	5
Member Club Update.....	6
Some Editorial Comments.	6
Show Dates.....	7-8
Help!!.....	8
Officer & Chairmen Roster.	9-10
Endowment Fund Flyer.	11

MARK YOUR CALENDAR

Aug 5. Deadline for Sept newsletter
Sept 5. Deadline for Oct newsletter
Aug 21-26. Camp Paradise wk 1
Aug 28-Sept 2. Camp Paradise wk 2
Nov 11-13. . . . Fall Business Meeting–Visalia

CFMS INSURANCE CONTACTS

McDaniel Insurance Services
PO Box 1294, Ojai, CA 93024
Tel (805) 646-9948 or (800) 400-7288
Fax (805) 646-9976; email: mcins@west.net
Web Site: www.mcdanielinsuranceservices.com

Ellen Ferrell
1392 Bouquet Dr. #A
Upland, CA 91786-3358
(727) 512-0381
ellenbf2007@aol.com

CFMS NEWSLETTER SUBSCRIPTIONS

CFMS Newsletter is published 11 times a year by the California Federation of Mineralogical Societies, Inc., PO Box 1657, Rialto, CA 92377-1657. Subscription: \$5.50 per year, January through December.

CFMS WEBSITE

The CFMS website is accessible at www.cfmsinc.org
Editors are invited to download articles for their bulletins from this website. Be sure to cite the source.

NOTES FROM THE EDITOR

The deadline for the newsletter is the 5th day of the month prior to the month of publication. Articles should be sent to the editor at bplarue@earthlink.net. “snail mail”? Please send to the CFMS PO Box 1657, Rialto, CA 92377-1657. Articles without a byline are written by the editor.

DONATIONS

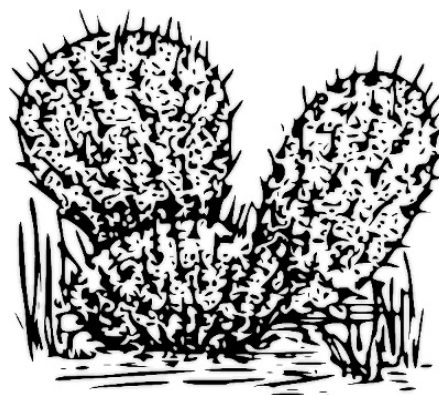
Donations to any of the funds administered by CFMS and/or AFMS are tax deductible under the rules governing tax exempt organizations which are 501(c)(3). Your cancelled check or receipt is considered to be proof of your donation for purposes of filing your federal tax return. If a personal donation is \$250 or more, a letter attesting to that amount is also required. Member clubs and individuals are encouraged to donate to any of the following:

CFMS Scholarship Fund
CFMS Endowment Fund
CFMS General Fund
Diedrick Memorial Scholarship Fund
AFMS Scholarship Foundation
AFMS Endowment Fund
Burns Memorial Camp Fund (benefits Earth Science Studies)
Facilities Development

Your donations should be sent to:

Pat LaRue, Exec. Sec/Treas
PO Box 1657
Rialto, CA 92377-1657

Receipts and any supporting documents will be forwarded on to the committee member responsible for acknowledgment. Please make all checks payable to CFMS or AFMS as appropriate and note the fund in the memo section.





JUNIORS ACTIVITIES

By Jim Brace-Thompson, CFMS
Junior Activities Chair

Assessing the State of Our Juniors Programs: *Seeking Your Help!*

In light of the COVID pandemic, many clubs saw serious declines in membership, not least within the ranks of pebble pups and juniors. I would like to assess just how serious this decline has been, and how we are all recovering (or not) from it. Thus, via the CFMS email list and by emailing addresses provided in the club roster on the CFMS website, I'll be sending out a (very) brief questionnaire to all CFMS clubs and societies.

Can you help? If so, here are my primary questions:

1. Did you have an active pebble pups/juniors program prior to the COVID pandemic in 2019? If yes, can you briefly describe approximately how many kids were involved and what sorts of things you did with them? If no, why did you not have a juniors program?
2. If you had a juniors program, once COVID struck and we were told not to gather in group situations, what happened to that program? For instance, did it dissolve altogether? Did you continue via alternative means (email, Zoom meetings, etc.)? Other?
3. Given that pandemic restrictions have been lifted for the most part, have you resumed any juniors and pebble pups programs your club previously sponsored, or have you started a new juniors program? If so, how have you gone about this, and how would you judge the success of your efforts thus far?

I welcome your answers to these questions! Please email me at jbrace@roadrunner.com or mail a note to Jim Brace-Thompson, 7319 Eisenhower Street, Ventura, CA 93003. I'll be collating responses toward a report at the Fall CFMS Directors Meeting so that we can all know where we currently stand and so that we might share best practices toward reinvigorating our local pebble pup and juniors programs!

CFMS FALL BUSINESS MEETING

By Pat LaRue, Exec Sec/Treas

The annual Fall Business Meeting and election of 2023 Officers will be held November 11-13, 2022 at the Wyndham-Visalia, off Hwy 198 in Visalia, CA. For those who have not been to this location in the past, take Hwy 198 exit east from Hwy 99. You will see the hotel located just south of the first off ramp past the airport.

Room reservations can be made by phone at **(559) 651-5000**. To receive the special CFMS rate of \$102 per night, tell them you are with CFMS. Cut-off date for this price is **October 28, 2022**. The group code is 111022CAF. The first night's deposit or guarantee by credit card must accompany your reservation. Do not make reservations through the website; call them directly.

An informal **Cracker Barrel** will be held **Friday** evening at **7:30 p.m.** As in the past, hotel policy forbids our bringing snack foods to any of the meetings. The **Business Meeting** will be called to order on Saturday, **November 12, at 9 a.m.** Join us at the **Banquet** that Saturday evening. President-elect Kim Fiala will have a brief meeting of her 2023 committee chairpersons on Sunday a.m., time to be announced.

Banquet Menu Lemon Pepper Chicken

Marinated and Grilled 6 Oz Breast of Chicken Served in a White Wine Sauce with Lemon, Shallots and Peppercorns
Roasted Red Potatoes
Baby Carrots
Mixed Baby Greens Salad
Dinner Rolls with Butter
New York Style Cheesecake

\$40 tax and gratuity included.

Vegetarian and gluten free options available upon request.

As in past years, we will not have a bar in the room, but a cocktail server will be available to take your orders and deliver them to the room.

Make banquet reservations by November 5, 2022.

Mail your check payable to CFMS to:

CFMS
PO Box 1657
Rialto, CA 92377-1657

CAMP PARADISE

By Tony & Sandie Fender, co-chairs

Camp Paradise is coming up fast, so make sure to get your reservations in quickly. The lapidary classes will be from Aug 21st – 26th and Aug 28th – Sept 2nd. The cost of \$425 per person includes classes, food and accommodations. Our instructors are highly skilled artisans who love to teach students their skills.

The chef we had last year is returning, so you can expect great food during your stay at camp.

We have classes in Cabochon making, Lost wax casting, Beginning and Advanced silversmith, Wire wrap, PMC and Fused glass, Carving, Enameling, Ming tree magnets, Chain making and this year we have a class in relief carving. During the evening we have short demonstrations of other lapidary skills including vacuum casting and etching.

There is an RV area with hookups for those who prefer to bring their own house.

The registration form is on the CFMS website.



NOMINATING COMMITTEE REPORT

By Barbara Loudon

The CFMS Nominating Committee is searching for a candidate for the Secretarial position on the 2023 CFMS Executive Committee. This position requires a five-year commitment, two years as Secretary, one year as 2nd Vice President, one year as 1st Vice President, then President.

Any CFMS member club/society can nominate a candidate by sending or emailing a letter to the CFMS Nominating Committee. The candidate must have approval of their club/society, and the letter be signed by a sitting elected officer of his/her club/society, sharing a short bio, the candidates' leadership skills and qualifications for this CFMS Secretarial position.

It is important that we have this nomination letter as soon as possible, as the CFMS Directors will be voting at the November meeting in Visalia.

Barbara Loudon, Chair
Nominating Committee
530-305-2825
baplouden@aol.com
P.O. Box 1144
Colfax, California 95713-1144

LOOKING FOR A PROGRAM?

One of the ongoing challenges for most clubs is finding a program for the educational portion of their general meeting. The CFMS Visual Programs collection could be the answer. The collection is in DVD format and covers a range of subject matter from how-to topics to geology and everything in between.

The list of programs is available on the CFMS website as well as the order form. Cost is \$10 for each program ordered. If you haven't used the visual programs library in the past, it's time to give it a try. Any questions about program content should be directed to the Visual Programs Chair Sharon Rogow sharonrr@cox.net (702) 499-0272.

Do give it a try. You won't be disappointed.

Safety – WTF

By Ellery Borow, AFMS Safety Chair

Safety - Wow, that's fun (WTF). When we back our cars out of the driveway, we (should) look back behind the car first. When we cross the street, we (should) look both ways before crossing. Crossing the street can be a complicated task. Is there a pedestrian crossing or crossing guard? Is it a two-lane road or a six lane? Is there a traffic light, a "walk"/"don't walk" signal? Are there typically eight to ten cars per minute passing by, or eight to ten cars per hour? Do the cars honor the red color traffic control device where red means stop? Crossing-the-street skills are taught, stressed, practiced, practiced and practiced some more until they become second nature, done without much conscious thought.

We study driving manuals, grinding machine instructions, rock-cleaning chemical labels, safety-exit maps and all manner of safety guidelines in our great hobby. We memorize them, understand them, utilize them so much that their content becomes second nature.

Whether we are crossing the street or using the rock saw, we do not constantly refer back to the instructions. In those instances, our safety training works in the background while we enjoy the walk or take pleasure in slabbing the stone. In other words, we are being safe as well as experiencing the Wow, that's fun! In a perfect world, we would have read, studied, had a class or otherwise have learned to be safe, and then applied that learning. In an imperfect world, traffic signals sometime don't work well or an important part of the rock saw malfunctions or breaks—and we, all of a sudden, need to make judgements as to how to stay safe.

Safety is being prepared ahead of time with the appropriate learning, and having available common sense, judgement, experience, thoughtfulness, understanding and, sometimes, a sense of urgency to respond when our prior learning is insufficient. For the unexpected, it helps to have another person nearby within earshot; to have, or have available, a person with a variety of experiences which might help; a telephone or cell phone available with emergency numbers to call; a plan B, C, D, E; an instruction book, just in case; and an understanding that it is wise to expect the unexpected. We all want one another to be safe. We all want the Wow, that's fun in all we do.

Your safety matters; it is in the instructions.

From *AFMS Newsletter*, May 2022

“NIPPER MOUNTS”

By Jennifer Haley, AFMS Historian

I hadn't heard of “Nipper Mounts” before, and when I came upon an article in a 1963 *Rocks and Minerals Magazine* about them, I thought you might find it interesting too.

In the summer of 1951, some rockhound friends went on a road trip from Northern Maine to New York State to meet up with a mineral collector like themselves. His name was Mr. Ray Letson, who was known to have a very fine mineral collection. It was very common to swap minerals with other collectors back then, and people were so eager to share.

What the travelers were especially impressed by were Ray's “Nipper Mounts.” For the mineral collector living in an apartment with little room to display or hold their ever growing earthly collections, the idea of making or collecting “Nipper Mounts” was ideal. The name came from using a pair of nippers to nip off a small specimen from a larger specimen. The specimen was glued onto a 1” to 2” card with the name of the mineral and its locality. Ray enjoyed making these to sell and giving them to the Boy Scouts.

The travelers created their own form of “Nipper Mounts.” In their criteria they used minerals which were ¼” to 1 ¼” long mounted on clear flat plastic. Later they created upright and upside-down “U” shapes made of clear plastic to display some of their specimens better. Some of their friends liked to display their “Nipper Mounts” on golf tees.

Every time the travelers entered competitions at rock and gem shows, they won awards for their “Nipper Mounts.” The travelers commented, “Next to micromounts, “Nipper Mounts” are the most perfect of the works of the Great Mineralist, but unlike micromounts these may be seen with the naked eye, thus are more easily shared with others. Everyone who sees them finds them interesting, beautiful, and is completely captivated by them.

From *AFMS Newsletter*, May 2022

Editor's note: I never heard of these; can't help but wonder if these were the close relatives of today's thumbnail—a specimen with dimensions no greater than 1x1x1.

MEMBER CLUB UPDATE

By Pat LaRue, Executive Sec/Treas

Since the May Directors Meeting the following clubs are now current and members in good standing:

Fallbrook Gem & Mineral Society
Glendora Gems Rock & Mineral Club
Mojave Mineralogical Society
Palmdale Gem & Mineral Society
Palos Verdes Gem & Mineral Society
Sequoia Gem & Mineral Society
Victor Valley Gem & Mineral Society

There are still three societies which have not responded to the reminder letter mailed last month. We don't want to lose you. Any society/club not in good standing as of September 30 will be dropped from the membership and will not be included in the insurance program which renews each year on October 16.

Any societies/clubs not in good standing when the Society Roster was published in late April were not included in the roster. I encourage you to contact Marcia Goetz at marciagoetz195@gmail.com with your current contact info, meeting times, etc, so it can be updated on the CFMS website.

Normally the Society Roster is distributed at the annual Convention/Show. If you did not have a representative at the show and wish to receive a copy, let me know at bplarue@earthlink.net and I will mail one to you. Please include the address to which it should go. If preferred I will email the roster to you in pdf format.



SOME EDITORIAL THOUGHTS== WHY HOST A SHOW?

There are multiple reasons. I'll list a few:

- Promote your club.
- Make some money.
- Help promote your Federation.
- Attract quality exhibits. (think competitive cases and special exhibits not often seen at smaller club shows.)
- Have special programming and speakers.
- Get to meet like minded hobbyists from other places.
- Etc., etc.

Currently no club has stepped up to the plate for future shows. We host the AFMS in 2024. Wouldn't it be embarrassing to not have anyone rise to the challenge. We need someone for 2023 and beyond.

Susan Chaisson-Walblom is ready to visit any southern CA club to answer your questions and concerns. Bob Rush or Sue Webb are the show consultants for northern CA and NV.

CFMS folks are always willing to lend a hand if asked. It is not unusual to see several volunteers from other CFMS clubs hard at work on set up day and at show close. Several years ago much effort went into modifying the show contract to provide more flexibility for revenue sharing.

I hear some clubs say they are so successful with their club show that they are not willing to share the revenue because they do all the work and get no help from the Federation. Some clubs say they are too small, don't have enough workers, etc. Perhaps they could join forces with another club and co-host. Others simply don't believe they could do it. My own club has hosted two successful shows and this group had zero experience in putting on any kind of show—it is a gold prospecting group. If a prospecting club can do it, anyone can do it. After all a Federation show is just a larger version of your club show.

This reluctance to host is not unique to CFMS. All seven federations face the same challenge. What can we do to get more of you to say yes, we'll do it? Have heard that some of you are thinking about it but haven't made a commitment—time is growing short—let's hear from you.

2022 CFMS SHOW DATES

Shows and Events

*Sponsored by
CFMS Clubs & Societies!*

*Please submit your
Show or Event as soon as possible
to receive maximum advertising value!*

*Email to:
SHOW DATES*

*Use the Online Show Form
at www.cfmsinc.org*

(click on Shows)

*You should receive a confirmation
within 5 days after submitting your
Show Date information!*

2022

CLUB/SOCIETY SHOWS ARE LISTED HERE

August 5-7, 2022, Nipomo, CA
Orcutt Mineral Society
Nipomo High School, 525 N. Thompson Ave.,
Nipomo, CA 93444
Hours: Friday & Saturday 10 AM – 5 PM,
Sunday 10 AM – 4 PM
Contact: nipomocowgirl55@yahoo.com
Website: <http://omsinc.org>

August 6-7, 2022, Roseville, CA
Roseville Rock Rollers Gem and Mineral Society
@the Grounds, Roebbelen Event Center,
700 Event Center Dr., Roseville, CA 95678
Hours: Saturday 10-5, Sunday 10-4
Contact email:
gloriarosevilleroockrollers@gmail.com
Website: <https://www.rockrollers.com/index.html>

August 20-21; Arcadia CA
Pasadena Lapidary Society
“Inspiration Unearthed”, 62nd Annual
Tournament of Gems
Arcadia Masonic Center, 50 W. Duarte Rd.,
Arcadia
Hours: Sat. 10-5, Sun. 10-4
Contact: Ellen Ferrell 1-727-512-0381
Email: ellenbf2007@aol.com
Website: pasadenalapidary.org

August 20-21, 2022 – Tehachapi, CA
Tehachapi Valley Gem and Mineral Show
500 East “F” Street, Tehachapi, CA
Hours: 9 AM – 5 PM
Contact Ron Myrick, E-Mail:
travis462@outlook.com (661) 972-1117
or Robert Papac: (661) 342-5589
Contact: email: getback@csurfers.net
Website: <http://tvgms.org>

September 10-11; Reno, NV
The Reno Gem & Mineral Society, Inc
Jackpot of Gems
Reno Convention Center
4390 S Virginia Street
Hours: Sat 10-5, Sun 10-4
Contact: Dan Ellis
Email: sailondan55@aol.com
Website: www.renogms.org

September 17-18, 2022 – Chico, CA
Feather River Lapidary and Min Soc
Silver Dollar Fairgrounds, 2757 Fair St.,
Chico, CA 95928
Hours Sat 9-5, Sun 9-4
Contact: (530) 586-7052, mmpg@att.net
Website: <http://featherriverrocks.org>

September 24-25; San Luis Obispo, CA
San Luis Obispo Gem and Mineral Club
San Luis Obispo Veterans Memorial
Building, 801 Grand Ave., San Luis
Obispo
Hours: Sat & Sun 10-5
Contact: 2002show@slogem.org
Website:
<http://www.slogem.org/show.htm>

September 24-25, 2022- Long Beach
Long Beach Mineral and Gem Show
Gems on the Hill Show
Signal Hill Public Library, Signal Point
Terrace and Community Room
Hours: Sat 10-5, Sun 10-4
Contact: (562) 253-1390,
karin.yasuda@gmail.com
Website: <http://facebook.com/LBMGS>

October 8-9; Los Altos, CA
Peninsula Gem and Geology Society
Los Altos, CA
Hours: Sat & Sun 10-5
Contact: (650) 575-3144
Website: <http://pggs.org>

October 8-9, 2022, Grass Valley, CA
Nevada County Gem and Mineral Society
Earth's Treasurers Show 2022
Nevada County Fairgrounds, 11228
McCourtney Rd., Grass Valley, CA 95945
Hours Sat 10-5, Sun 10-4
Contact: 4vancian5@att.net
Website: <https://www.ncgms.org/show-info/>

October 9, 2022 - Fallbrook, CA
Fallbrook Gem and Mineral Society
Fall Festival of Gems & Minerals
123 W. Alvarado Street, Fallbrook CA
Hours: 9 AM-4 PM
Contact: (760) 728-1130, info@fgms.org
Website: <http://www.fgms.org>

October 15, 2022 – West Hills, CA
Woodland Hills Rock Chippers
First Methodist Church, 22770 Sherman
Way, West Hills, CA 91304
Hours 10-5
Website: <http://www.rockchippers.org>

October 15-16, 2022 - Santa Rosa, CA
Santa Rosa Mineral & Gem Society
45th Annual Mineral and Gem Show
Santa Rosa Veterans Memorial, 1351 Maple
Ave., Santa Rosa, CA
Hours: Saturday 10 AM -6 PM, Sunday 10
AM - 5 PM
Contact: (707) 849-9551, jolene4srmgs@gmail.com
Website: <http://SRMGS.org>

October 15-16, 2022, Placerville, CA
El Dorado County Mineral & Gem Society
El Dorado County Fairgrounds, 100
Placerville Dr., Placerville, Ca 95667
Hours: Sat & Sun 10-5
Contact: office@edcmgs.org
Website:
<http://www.eldoradocountymineralandgemssociety.org>

October 29-30, 2022, Sacramento, CA
Sacramento Mineral Society
6151 H Street, Sacramento, CA
Hours: Sat & Sun 10-5
Contact: (916) 672-5819,
gemsow@sacramentomineralsociety.org
Website: <https://www.sacgemshow.com>

National/Regional Shows:

*Eastern Federation September 24-25,
2022, Harrisburg, PA*

*Midwest Federation
Springfield MO
Sept. TBD*

*Northwest Federation
September 30-October 2
Hillsboro, OR*

*South Central Federation
AFMS 2022
October 14-16, 2022
New Orleans, LA*

*Southeast Federation
Nov. 18-20, 2022
Marietta, GA*

DON'T FORGET TO UP-DATE YOUR CLUB WEBSITE WITH YOUR NEW SHOW DATE

**Check for show links at
www.cfmsinc.org/shows**

REMINDER

Advertise your Show in as many Free locations as possible!

1. **Local newspapers**
2. **Current events sections!**
3. **Local TV stations,**
4. **Community calendars!**
5. **Other Local Shows**

Advertise your shows in the *Rock & Gem Magazine!*

www.rockngem.com/

showdate-submissions/

Send the information in early so it's published in

the magazine as well as online.

HELP!!

President Jim is letting everyone know about the various committees within CFMS which exist to provide services to the societies. It is possible that many of you don't even know these committees exist or what their purpose is.

In my opinion the best way for Societies/Clubs to find out what services your committee can provide is to write an occasional article for the newsletter. I really appreciate those of you who regularly submit items. It does make my job as your editor easier and a lot more fulfilling knowing that the information you seek is being provided.

Don't feel you have to write something that will fill an entire column or even the whole page. If you don't feel your writing skills are all that great, don't despair. I would be willing to do any editing needed to help deliver your message. I do confess to missing the occasional typo. Of course I always notice it when I get the newsletter back from Office Max when it's too late to make the correction.

I do want to hear from you. The deadline is the 5th of the month, but that is flexible if I know in advance you plan to submit something.

2022 CFMS Officers, Chairmen and Committee Roster

PRESIDENT

Jim Barton (Darlene)

(916) 847-7321
geologist1 at surewest.net

TREASURER

Diane Cook (John)

(805) 340-9026
johndianedaisy at yahoo.com

FIRST VICE PRESIDENT

Kimberly Fiala (Glenn)

(916) 412-0453
fialakimberly at yahoo.com

SECRETARY

Heidi Hall

(707) 291-8904
hdafler at yahoo.com

SECOND VICE PRESIDENT

Bob Rush (Pat)

(209) 772-9118
rocksbob at sbeglobal.net

EXECUTIVE SECRETARY/TREASURER

Pat LaRue (Bural)

(909) 874-5664
bplarue at earthlink.net

ALL AMERICAN CLUB

Diane Cook (John)

(805) 340-9026
johndianedaisy at yahoo.com

BULLETIN AIDS

Juanita Pardun

(916) 292-2881
bulletinaid.cfms at gmail.com

BY-LAWS

Tony Fender (Sandie)

(626) 807-5279
arhfender at gmail.com

CFMS CAB CASES - NORTH

Paul Rose (Jo Ann Maesi)

(650) 302-6684
pmrose63 at gmail.com

CAB CASES - SOUTH

Chris Ward

(818) 439-0217
chris_ward678 at yahoo.com

CAB CASES - CENTRAL

Bob Papac

(661) 821-7103
getback at csurfers.net

CFMS DIRECTORS TO AFMS

Jim Barton (see Pres)
Kimberly Fiala (See 1st VP)

CFMS JURY OF AWARDS

Bob Rush, Chair (See 2nd VP)
Jim Barton (See President)
Juanita Pardun (See Long Range Planning)

CFMS NEWSLETTER EDITOR

Pat LaRue (See Exec Sec/Treas)

CFMS REP TO AFMS

Margaret Kolaczyk

markolaczyk at gmail.com

CUSTODIAN

Kimberly Fiala (See 1st VP)

EARTH SCIENCE STUDIES

Tony and Sandie Fender, Chair (See Bylaws)
Sandi Kilcrease—Camp Mgr North
Re gistrar
Audrey Harvey—Camp Mgr South
Re gistrar

ELECTRONIC COMMUNICATIONS

Marcia Goetz (Joe)

ENDOWMENT FUND—CFMS

Sharon Rogow, Chair (Bart Solomon)

(702) 499-0272
sharonrr at cox.net

Jim Barton (See Pres)
Kimberly Fiala (see 1st VP)

ENDOWMENT FUND—AFMS

Heidi Hall

(707) 291-8904
hdafler at yahoo.com

FACILITY DEVELOPMENT

Juanita Pardun, Chair (See Long Range)

FIELD TRIPS NORTH

Jim Barton (See Pres)

FIELD TRIPS SOUTH

OPEN

FINANCIAL ADVISORY COMMITTEE

Kimberly Fiala (See 1st VP)
Fred Ott (Susan)

GOLDEN BEAR

Bob Papac, Chair (See Cab Cases Central)

Bural LaRue (Pat)

(909) 644-5004
blarue123 at gmail.com

1st year position open
Jim Barton (See Pres)
Juanita Pardun (See Long Range Planning)

HISTORIAN COMMITTEE

Steve Collett, Chair

starmstr1 at bak.rr.com

Memorabilia—Susan Martin
Past Presidents Case—Sandie Fender
Photo Restoration—John Martin

INSURANCE

Ellen Ferrell

(727) 512-0381
ellenbf2007 at aol.com

INTERNET COMMITTEE

Ben Shutman, webmaster

JUNIOR ACTIVITIES

Jim Brace-Thompson, chair (Nancy)

(805) 659-3577
jbraceth at roadrunner.com

LEGAL ADVISOR

OPEN

CFMS NEWSLETTER AUGUST 2022

LONG RANGE PLANNING

Juanita Pardun, Chair (See Bulletin Aids)
cfms.longrangeplanning at gmail.com

All living CFMS Past Presidents
2022 Executive Committee

MEMBERSHIP

Bob Rush , Chair (Pat) (See Treasurer)
Dick Pankey (Betty)
Fred Ott (Susan)

MUSEUM COMMITTEE

Frank Van Hecke

(530) 575-4252
4vanclan5 at att.net

NOMINATING COMMITTEE

Barbara Loudon, Chair

(530) 305-2825
baplouden at aol.com

Colleen McGann
Bob Knox
Joe Goetz
Ronald Rackliffe
alternate (as needed)

OFFICERS & CHAIRMEN MANUAL

Juanita Pardun (See Long Range Planning)

PARLIAMENTARIAN

Tony Fender (See Earth Science Studies)

PHOTOGRAPHER

John Martin (see PLAC)

PROGRAM AIDS

Emmy Lam
(818) 297-7132
CFMSprogramaids at gmail.com

PUBLIC LANDS ADVISORY

John Martin, Chair (Susy)

(661) 942-8336 FAX (661) 945-2589
plac at antelecom.net

ROCKHOUND OF THE YEAR

Chris Ward (See Cab Cases South)

RULES COMMITTEE

Pat LaRue, Chair (Bural)

(909) 874-5664
bplarue at earthlink.net

Margaret Kolaczyk (See CFMS Rep to AFMS)
Colleen McGann
Kimberly Fiala (See 1st VP)

SAFETY COMMITTEE

Bart Soloman (Sharon Rogow)

(702) 499-0272
sharonrr at cox.net

SCHOLARSHIP–AFMS

Pat LaRue (see Exec Sec/Treas)

SCHOLARSHIP–CFMS

Bob Rush, Chair (See 2nd VP)

Executive Committee

SHOW CONSULTANT–SOUTH

Susan Chaisson-Walblom
(661) 406-0143
slchaisson at yahoo.com

SHOW CONSULTANT–NORTH

Bob Rush (See 2nd VP)

Sue Webb, assistant
rgmseditor at gmail.com

SHOW DATES

Marcia Goetz (Joe)

(626) 260-7239
marciagoetz195 at gmail.com

TAX ADVISOR

Pat LaRue (see Exec Sec/Treas)

TROPHY COORDINATOR

Frank Mullaney

(408) 691-2656
rockyfiv at gmail.com

VISUAL PROGRAMS

Sharon Rogow (Bart Solomon)

(702) 499-0272
sharonrr at cox.net

WEB SITE CONTEST

Merryan O'Neill

(530) 622-4229
logtown49 at gmail.com

CFMS NEWSLETTER AUGUST 2022

THE CALIFORNIA FEDERATION OF MINERALOGICAL SOCIETIES ENDOWMENT FUND

Founded June 28, 1987 by CFMS Directors in Convention, Turlock, CA

The CFMS Endowment Fund was formed to provide a stable source of income to financially assist the programs and services the CFMS provides to its members. All donations remain as principal and only earnings are available for distribution to the CFMS. The Fund is open to receive most types of assets. (*Non-cash items will be converted to cash as is prudent. Donating depreciated assets offers a charitable tax deduction with capital gains tax.*)

Fund Categories:

Patron Society: A Society or club having donated \$100 plus \$1 per member is given special recognition on a Patron Honor Plaque that is on display during CFMS shows and other events.

Patron: A person (may be a couple) having donated \$100 or more. Also has name(s) posted on the Patron Honor Plaque and receives a Booster pin.

Booster: A person having donated \$25 to the Fund. The Booster pin, which was designed by the late Chuck Davis, is given to any person upon donating \$25 to the Fund.

The Endowment Fund benefits the now generation and generations to come. Join in and support the Earth Sciences by sending in your check or pledge in support of the CFMS Endowment Fund.



Here is my check to the CFMS Endowment Fund for:

\$5 ____ \$10 ____ \$15 ____ \$20 ____ \$25 ____ \$50 ____ \$100 ____ or \$ ____

Pledge to donate \$ ____ by December 31, 2022 or \$ ____ by ____

Donation is ____ Individual ____ A memorial for ____

Name: ____

Phone: ____ email: ____

Mail to: CFMS
PO Box 1657
Rialto, CA 92377-1657

All gifts to the CFMS Endowment Fund are tax deductible as allowed by law.

CFMS NEWSLETTER

PO Box 1657

Rialto CA 92377-1657

Pat LaRue, Editor

Return Service Requested

Non-Profit Org
US Postage
PAID
San Bernardino, CA
Permit No 1290