



# CFMS NEWSLETTER

Vol LX #4

April 2023



## PRESIDENT'S MESSAGE

By Kimberly Fiala

Hello my fellow rock hunters,

Welcome Spring, how we have missed you! Hopefully everyone got to enjoy a little bit of cold so they can remember it when complaining about how hot it is later! I won't talk about any volunteering for the show coming in June. Well, I thought about it briefly and I say, "April Fools!" I will talk about volunteering for the show, Yes, the CFMS show that is just a few months away, what are you waiting for, sign up, volunteer.

Did you talk with friends/family and neighbors about volunteering to help the society whether it being your own local club show or the CFMS show? Did you take your friends/family on an outing to any shows last month like: Vallejo, Ventura, Turlock, Newark, Stoddard Wells, Lake Elsinore, San Jose, Fallbrook, Lemoore, Clovis, and Angels Camp? There are plenty of shows to experience and to see the pride and joy on those volunteers' faces welcoming guests and/or returning guests. Volunteers are there to help with the show and explain the skills of what is actually done with rocks, gems, and/or minerals. It's just amazing what mother earth can produce and what the people do with it. Get out there and volunteer!

How does one volunteer? Contact Jim Barton, CFMS Show Co-Chair at 916-847-7321. Tell him where you would like to work or be adventurous and try out a new area to volunteer in. We can make this a successful and exciting show with your help! Why not be a part of it and help the community learn more about our society! You may also want to start thinking about Camp Paradise.

P.S. Thank you to those that have posted my last newsletter in their own bulletins; we need to get the word out and volunteer, no matter what club! We are here to support each other when and where we can. Enjoy the Spring and Happy Easter!



### On the Inside

Mark Your Calendar.....	2
CFMS Insurance & Website Contacts. ....	2
Donations.....	2
Dues are Due. ....	2
Jr. Activities.....	3
Seeking Golden Bear Award Nominees.....	4
Vendor Spaces Available.....	4
Promoting Camp Paradise-Part 1.....	5
CFMS Endowment Fund. ....	5
Upcoming CFMS Show in Losi.....	6
Visual Programs.....	6
CFMS Has a Facebook Page. ....	6
Show Dates.....	7-8
Get Your Exhibits Ready.....	8
Camp Paradise Application. ....	9-10
Officer & Chairmen Roster. ....	11-12
CFMS Show Preregistration Form.....	13

*Kimberly Fiala*

### MARK YOUR CALENDAR

Jan 1' . . . . . Dues/insurance for 2023 due  
Apr 5. . . . . Deadline for May newsletter  
May 5. . . . . Deadline for June newsletter  
June 23-25. . . . . CFMS Convention & Show

### CFMS INSURANCE CONTACTS

McDaniel Insurance Services  
PO Box 1294, Ojai, CA 93024  
Tel (805) 646-9948 or (800) 400-7288  
Fax (805) 646-9976; email: [mcins@west.net](mailto:mcins@west.net)  
Web Site: [www.mcdanielinsuranceservices.com](http://www.mcdanielinsuranceservices.com)

Ellen Ferrell  
1392 Bouquet Dr. #A  
Upland, CA 91786-3358  
(727) 512-0381  
[ellenbf2007@aol.com](mailto:ellenbf2007@aol.com)

---

### CFMS NEWSLETTER SUBSCRIPTIONS

CFMS Newsletter is published 11 times a year by the California Federation of Mineralogical Societies, Inc., PO Box 1657, Rialto, CA 92377-1657. Subscription: \$5.50 per year, January through December.

---

### CFMS WEBSITE

The CFMS website is accessible at [www.cfmsinc.org](http://www.cfmsinc.org)  
Editors are invited to download articles for their bulletins from this website. Be sure to cite the source.

---

### NOTES FROM THE EDITOR

The deadline for the newsletter is the 5<sup>th</sup> day of the month prior to the month of publication. Articles should be sent to the editor at [bplarue@earthlink.net](mailto:bplarue@earthlink.net). "snail mail"? Please send to the CFMS PO Box 1657, Rialto, CA 92377-1657. Articles without a byline are written by the editor.

### DONATIONS

Donations to any of the funds administered by CFMS and/or AFMS are tax deductible under the rules governing tax exempt organizations which are 501(c)(3). Your cancelled check or receipt is considered to be proof of your donation for purposes of filing your federal tax return. If a personal donation is \$250 or more, a letter attesting to that amount is also required. Member clubs and individuals are encouraged to donate to any of the following:

CFMS Scholarship Fund  
CFMS Endowment Fund  
CFMS General Fund  
Diedrick Memorial Scholarship Fund  
AFMS Scholarship Foundation  
AFMS Endowment Fund  
Burns Memorial Camp Fund (benefits Earth Science Studies)  
Facilities Development Fund

Your donations should be sent to:  
Pat LaRue, Exec. Sec/Treas  
PO Box 1657  
Rialto, CA 92377-1657

Receipts and any supporting documents will be forwarded on to the committee member responsible for acknowledgment. Please make all checks payable to CFMS or AFMS as appropriate and note the fund in the memo section.

---

### DUES ARE DUE!!

Thank you to our member societies and clubs who have already mailed payment for the 2023 CFMS dues and general liability insurance. Reminder letters are being mailed out to member societies/clubs which have not yet submitted their payment. This is being mailed to either your Federation Director when known or your organization's mailing address.

At the same time you can mail out the officer change form so I can learn of changes to your club contact information and the addresses of those members who you designate to receive the 3 complimentary newsletters. Your information is not shared. If you prefer to read the newsletter on the website, let me know so a hard copy is not mailed.



## JUNIORS ACTIVITIES

By Jim Brace-Thompson, CFMS  
Junior Activities Chair

### How To Build a Successful Kids Program, Part 2: Support Your Champion!

*And Two Reminders from Last Month!*

#### To Build a Successful Kids Program, Support Your Champion!

Last month, I noted that the NUMBER ONE ingredient for success in building a successful Kids Program is to have a Champion, or one true-blue totally committed kids' leader. However, I warned, don't leave your Champion out-to-dry. In other words, don't expect him/her to do it all. Once you have a Champion, **support** your Champion! Without support, there is no Champion. For true success, it takes a village and all-hands-on-deck. Support can be offered in many ways...

**Make use of members' talents.** Clubs have members with varied expertise: cabbage, soft stone carving, wire-wrapping, fossils, gem and mineral collecting, fluorescence, gold prospecting, field tripping, etc. Get each individuals to step up to lead a class. Don't expect one person to know it all nor to do it all. Offer support by offering to share your knowledge and passion with club kids in at least one hands-on activity or lecture per year. With members sharing varied areas of expertise, you'll quickly fill each month of the year.

**Drum up donations.** Many club members have rock piles just sitting in a garage, backyard, or an outdoor shed. Donate rocks, fossils, crystals etc., to the kids' program. And be generous! Don't take it as an opportunity to clear out your leaverite junk. Provide quality stuff that will excite the kids. Per the late-great comedian George Carlin, junk is stuff we toss, but stuff is junk we keep. Provide kids with good stuff, not junk while keeping in mind: kids can be more discerning than adults!

**Involve parents.** A kids' program should not be a babysitting service. Per my survey, those clubs that have proven successful have asked parents to stay, attend, and help out with sessions—or at the least with set-up and clean-up. Not only does this ensure parental involvement beyond your lessons and activities, it also

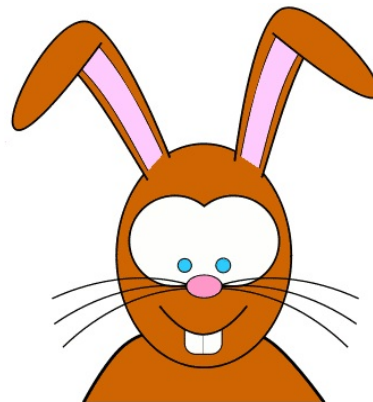
helps identify and groom future Champions to lead in coming years.

**Have a chain-of-succession.** This follows directly from my last point. All-too-often, a once vibrant and successful kids program fizzles and fades away with the departure of a Champion. Make sure someone is in the wings and is being groomed, supported, and educated to carry on.

#### Two reminders from last month...

**1) Seeking Volunteers.** I seek help with the 2023 CFMS Show Kids Booth. With our 2023 no-host show June23-25 in Lodi, we need volunteers. I welcome help supplying materials (high quality spinning wheel prizes, tiny sand-sifting specimens, grab bags). And I welcome help running the Kids Booth. With no individual club running the Show, we all need to come together in providing the resources and personnel to make for a great experience for one and all. Might you help in the Kids Booth? If so, please contact me (805-659-3577 or [jbraceth@roadrunner.com](mailto:jbraceth@roadrunner.com)).

**2) Show Chair's Award for Outstanding Junior Exhibit.** Whether entered as a competitive or noncompetitive exhibit, kids who enter a display in our 2023 CFMS Show are eligible to receive the Show Chair's Award for Outstanding Junior Exhibit. No application form needed. No hoops to jump through. Enter a display, and the Show Chair picks out what he/she prefers best. Get a certificate, a special gem, and a \$100 bill! The only way to earn it is to participate, so encourage your club kids to participate! See you in Lodi!



**SEEKING “GOLDEN BEAR AWARD”  
NOMINEES  
FOR OUTSTANDING SERVICE TO CFMS**

By Jim Brace-Thompson, Golden Bear Committee

The CFMS Golden Bear Award is an honor for especially outstanding service to the California Federation of Mineralogical Societies. The CFMS Board of Directors established the award in 1961 and called for it to consist of a lapel pin, plaque, or other award form. It is presented to a person or couple who is or was a member of a CFMS-affiliated society and whom the CFMS wishes to honor by conveying public appreciation and recognition. Most past awardees have generously offered years of sustained and committed service.

Nominations for people who have performed outstanding work for CFMS should be submitted to members of the Golden Bear Committee. Any nominee must be a member of a CFMS-affiliated society/club. Please note that nominee/s should not be informed of their nomination. It should come as a surprise honor during the Awards Banquet at our Annual Show & Convention.

More than one person may receive the award in any given year. Nominations may be made by the CFMS Executive Committee, a Federation Director of a member society/club, and/or a CFMS Committee Chair.

**ONLY CFMS SERVICE IS CONSIDERED FOR THE GOLDEN BEAR AWARD.** In other words, this is not to honor service to an individual member Society. (For that, we have the Rockhound of the Year award program.) Simple documentation must accompany the nomination. Deadline for nominations is April 30.

Please submit all nominations to Golden Bear Committee members:

1. Bural LaRue (Chair), [bplarue@earthlink.net](mailto:bplarue@earthlink.net)
2. Susan Chaisson-Walblom, [slchaisson@yahoo.com](mailto:slchaisson@yahoo.com)
3. Jim Brace-Thompson, [jbraceth@roadrunner.com](mailto:jbraceth@roadrunner.com)
4. Kimberly Fiala, [fialakimberly@yahoo.com](mailto:fialakimberly@yahoo.com)
5. Jim Barton, [geologist1@surewest.net](mailto:geologist1@surewest.net)

Please email your nomination letter to Bural LaRue with a cc to all members of the committee. We look forward to honoring an outstanding member of our CFMS community at the Annual Show & Convention taking place June 23-25 in Lodi, California.



**SHOW & CONVENTION  
ROCK, BEAD & JEWELRY SHOW  
RETAIL VENDOR SPACES ARE STILL  
AVAILABLE**

At: <https://cfmsinc.org/>

**For more information contact: Susan at  
[slchaisson@yahoo.com](mailto:slchaisson@yahoo.com)**

**Show Dates: June 23, 24 & 25, 2023**  
**Location: Lodi Grape Festival Grounds**  
**413 East Lockeford Street**  
**Lodi, California 95240**

**Show Hours:**

**Friday & Saturday 10:00 A.M. to 5:00 P.M.**  
**Sunday 10:00 A.M. to 4:00 P.M.**

**COME JOIN IN THE FUN!!!**



## PROMOTING CAMP PARADISE—PT I

By Jill Atkins, ESS Co-Chair

An old Pacific Gas and Electric property from the 1950's, the air is sweet with the scent of pine. It is nestled in the foothills between Grass Valley and Marysville, California. If you ever went to camp as a child it will bring back fond memories.

As you enter the property there is a flag pole surrounded by rocks in the middle of the camp. To the left is the mess hall and beyond that are the men's and women's dorms. To the right is the couples dorm. Past the flag pole and up the road a bit is "the barn". (More about that later.). Next to the barn is a wonderful swimming pool. Yes, we certainly do suffer at Camp Paradise! The property is surrounded by a forest of trees and the air is fresh.

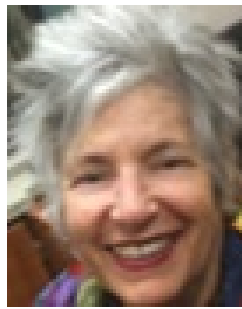
Once you check in with Glenda it is time to go to our assigned rooms and unpack, have a look around and greet old and new friends. This is some of the best of times because we learn about the other people we will be spending so much time with over the next week. "Where do you come from? What are you here to learn? Where do you want to start tomorrow? How many times have you been to the camp?" All these questions and more.

Dinner is at 5:30 and we line up to get our plates and utensils and to rubberneck about what is being served. The food is hot, delicious and plentiful. Once served we find a table and begin new relationships or reconnect with old friends.

The camp directors are Jill and Gary Atkins from the Reno club. After dinner they explain the rules and let you know what to expect for the next week. The rules are few and easy to abide by. We go over the schedule for the next week. Monday is Sell-a-rama when you can buy or sell stones, tools, jewelry, etc. Tuesday and Wednesday evening is free so you can attend lectures/demonstrations or relax after dinner. Thursday is the silent auction. All the items at the silent auction are donated and the money goes to the California Federation of Mineralogical Societies. Friday is wrap up and graduation. Jill and Gary will then invite everyone to the barn. Ahh, the barn. Myths and legends are created there as well as beautiful jewelry. Alright, I'm lying about the myths and legends, but I can assure you that beautiful items are created.

The cost this year is \$500 per week per person. **THE FIRST 6 PEOPLE WHO CONTACT THE REGISTRAR TO VOLUNTEER TO COME TO CAMP ON SATURDAY, August 19, AT 9 AM TO DO HARD, HEAVY, PHYSICAL WORK (i.e moving tables, tanks, etc.) WILL GET AN ADDITIONAL \$25 REDUCTION IN COST.** They must have signed up before July 1, 2023.

If any of this piques your curiosity then I hope you will put money aside every month for the next few months and you can be a part of this creative adventure. Next month I will describe the barn and all the wonders it holds.



## CFMS ENDOWMENT FUND

By Sharon Rogow, Chair

As the Endowment Fund is considered to be the financial backbone of the CFMS, all donations are greatly appreciated and very much needed. Last year, we raised a little over \$2,000.00 at the CFMS Show through sales of donated rocks, gems, minerals and other rock related materials.

In addition, we had our very fun roulette wheel going for children of all ages which contributed \$600 or so as a portion of the \$2,000.00. Monetary donations throughout the year are particularly helpful. Donations may be made in "honor of", in "memory of" or for any other reason that you or your society wish. Checks may be sent to Pat LaRue via snail mail, PO Box 1657, Rialto, CA, 92377-1657, delivered at the twice yearly business meeting or at the Endowment Fund table at the Federation Shows. Jewelry, gems and other rock related items may be sent throughout the year to Sharon Rogow, Endowment Fund Chair at PO Box 35078, Las Vegas, NV 89133. All donations are tax deductible and if you wish, a written donation letter will be supplied to you.

We are looking to you to give until it...feels good! Now we are getting close to the show so now is the time to get organized, make monetary and material donations and volunteer to help at our space to raise money at the show through sales. We need you!!!

## UPCOMING CFMS SHOW IN LODI

By Bob Rush, Show Chairman

Planning activities on the show are proceeding with discussions about where we can get display cases, Festival accommodations show security, advertising for the show and such. We need the adjacent societies to encourage all their members to agree to provide people to work at the show.

My wife Pat and I have been attending local shows to distribute the show cards and to request their help in providing show workers. We went to the Antioch and Vallejo shows and they agreed to discuss the CFMS show at their general meetings and both said they had already discussed it and they will continue to do so. They were eagerly looking forward to the show.

We will continue to attend any upcoming local shows up until the CFMS show. I have discussed with my club, The Mother Lode Mineral Society at our two last general meetings and many of our members agreed to come to the show to work.

For the last few weeks I have struggled to devote much time to the CFMS show because of our upcoming show on Saturday and Sunday March 11 and 12. When it is over I can devote more time and energy to the CFMS Show.

I would like to encourage all CFMS member clubs to focus on what help that you can provide for the show.

---

## VISUAL PROGRAMS

By Sharon Rogow, Chair

As of this writing there has been only one request for a program from our library so far this year. This is not nearly the activity that we had hoped for. In an effort to inform the societies that this service is available, I would like to suggest that the program chairs consider requesting from our library for use at meetings, shows, special events and for any other creative activity that may be appropriate. The most popular subjects over the last few years have been Red Treasures of the Rockies (gorgeous rhodochrosite from the Sweet Home Mine in Colorado with history of the mine) #57, German Agates #22, Flint Knapping #43, Franklin, NJ-Fluorescent Mineral Capital #3, Sedimentary and Vein Agates #4, and Tree Stories #2. Many instructional programs are also available. The cost for use is \$10 per program, may be paid in advance or on return. We request that feedback be included when the disc is sent back.

Requests should be made three weeks in advance. No postal fees are charged to CFMS as an anonymous donor covers them.

A list of available programs is available on the CFMS website.

## CFMS HAS A FACEBOOK PAGE!!

By Diane Cook, EC Treasurer

Hi Everyone:

As most of you must know the CFMS is holding a show in Lodi, CA June 23, 24 & 25, 2023. This is a great opportunity to show off all your beautiful specimens, handmade jewelry, fossils, and lapidary work. The show will have competitive exhibits and non-competitive. All exhibitors get free admission for all 3 days.

As a member of the Ventura Gem & Mineral Society we hold a show annually. One of the most important parts of a show is publicity. The CFMS can really use the help of all the clubs to advertise this show. We have established a Facebook page: <https://www.facebook.com/profile.php?id=100087552346218>

If your club has a Facebook page, please go to the California Federation of Mineralogical Societies page and like it. Share our show information. In turn when you are putting on your show come to our page and we will post and share your show information. You can email me at: [info@vgms.org](mailto:info@vgms.org) with your show flier and I will make sure we help promote your club show too.

If your club likes our FaceBook page I will put you in a drawing and you might win a prize! Head to the page now while it is on your mind. Email your club member who runs your page and let them know about the offer! Also, we need some local advertising. If you know the Lodi area, please send me an email so we can work on getting the show information out to the public. We need to know newspapers, radio stations, popular areas the public visits – e.g. malls, restaurants etc.

I am looking forward to seeing everyone in Lodi at the show!



## 2023 CFMS SHOW DATES

*Shows and Events*

*Sponsored by*

*CFMS Clubs & Societies!*

*Please submit your*

*Show or Event as soon as possible*

*to receive maximum advertising value!*

*Email to:*

**SHOW DATES**

*Use the Online Show Form*

*at [www.cfmsinc.org](http://www.cfmsinc.org)*

*(click on Shows)*

*You should receive a confirmation*

*within 5 days after submitting your*

*Show Date information!*

## CLUB/SOCIETY SHOWS ARE LISTED HERE

\*\*\*\*\*

2023

### March 18, 2023 – Lake Elsinore, CA

Lake Elsinore Gem & Mineral Society  
32097 Corydon Rd., Lake Elsinore, CA  
3<sup>rd</sup> Annual Spring Show  
Contact: (909) 208-6956, berylman50@aol.com

### March 18, 2023 – Fallbrook, CA

Fallbrook Gem and Mineral Society  
123 W. Alvarado St., Fallbrook, CA  
Hours: 1-4  
Contact: (760) 728-1130, info@fgms.org  
Website: <http://fgms.org>

### March 18-19, 2023 – San Jose, CA

Santa Clara Valley Gem & Mineral Society  
Santa Clara County Fairgrounds  
344 Tully Rd., San Jose, CA  
Hours: Sat & Sun 10-5  
Website: [www.scvgms.org](http://www.scvgms.org)

### March 18-19, 2023 – Lemoore, CA

Lemoore Gem & Mineral Club  
Lemoore Gem & Mineral Show  
Trinity Hall, 470 Champion St., Lemoore, CA  
Hours: Sat 10-6, Sun 10-4  
Website: <https://facebook.com/AndLemoore>

### March 24-26, 2023 – Clovis, CA

Fresno Gem and Mineral Society  
The Clovis Rodeo Grounds  
748 Rodeo Dr., Clovis CA  
Hours: Fri & Sat 10-5, Sun 10-4  
Website: <https://www.fgms.online>

### March 25-26, 2023 – Angeles Camp, CA

Calaveras Gem and Mineral Show  
Calaveras County Fairgrounds  
2465 Gun Club Rd., Angeles Camp, CA  
Hours: Sat 10-5, Sun 10-4  
Contact: (262) 348-6804,  
clairemathison1@gmail.com  
Website:  
<http://calaverasgemandmineralsociety.net>

### April 1-2, 2023 – Vista, CA

Vista Gem and Mineral Society  
Antique Gas and Steam Engine Museum,  
2040 N. Santa Fe Ave., Vista CA  
Hours: Sat 10-5, Sun 10-4  
Website: <https://vistarocks.org>

### April 8-9, 2023 – Mariposa, CA

Mariposa County Fairgrounds, 5007  
Fairgrounds Rd., Mariposa, CA  
Hours: Sat 10-5, Sun 10-4  
Website: <http://mariposagemclub.org>

### April 15-16, 2023 – Placerville, CA

El Dorado County Mineral & Gem Society  
El Dorado County Fairgrounds,  
100 Placerville Dr., Placerville CA  
Contact: office@edcmgs.org  
Website: <http://edcmgs.org>

### April 22-23, 2023 – Thousand Oaks, CA

Conejo Gem & Mineral Club  
Borchard Park  
190 N. Reino Rd., Thousand Oaks, CA  
Sat 10-5, Sun 10-4  
Contact: conejogemandmineral@gmail.com  
Website: <https://cgamc.org>

### April 29-30, 2023 – Anaheim, CA

Anaheim Searchers Gem & Mineral Society  
Brookhurst Community Center  
2271 W. Crescent Ave., Anaheim, CA  
Contact Nancybird68@gmail.com  
Website: <https://www.searchersrocks.org>

### April 29-30, 2023 – Santa Cruz, CA

Santa Cruz Mineral and Gem Society  
Santa Cruz Civic Auditorium  
307 Church Street, Santa Cruz, CA  
Contact: scruzmgs@gmail.com  
Website: <http://www.scrockngem.org>

### May 5-6, 2023 – Yucaipa CA

Yucaipa Valley Gem and Mineral Society  
Yucaipa Blvd at Adams Street, Yucaipa  
Hours Friday 6PM-10PM, Sat Noon -10PM  
Contact: grandpasgems@gmail.com  
Website: <https://www.yvgms.org>

### May 6-7, 2023 – Lancaster, CA

Antelope Valley Gem and Mineral Club  
Antelope Valley Fairgrounds,  
2551 West Ave. H, Lancaster, CA  
Hours: Sat & Sun 10-5  
Contact: marylandoriole@gmail.com  
Website: <http://avgem.weebly.com>

### June 3-4, 2023 – Jackson, CA

Amador County Gem & Mineral Society  
Gem & Craft Show at Kennedy Mine,  
12594 Kennedy Mine Rd., Jackson CA  
Hours 10-4  
Contact: (916) 698-9853,  
mountaingirl@volcano.net  
Website: <http://amadorgemandmineral.org>

### June 10-11, 2023 – Escondido, CA

Palomar Gem and Mineral Club  
The Convention Center at the California  
Center for the Arts  
340 N. Escondido, CA  
Hours: Sat 10-5, Sun 10-4  
Contact: tonifloyd41615@gmail.com  
Website: <http://palomargem.org>

### June 17, 2023 – Bellflower, CA

Delvers Gem & Mineral Society  
Delvers Parking Lot Sale  
14515 Blaine Ave., Bellflower, CA  
Hours: 10-4  
Website:  
<https://delversgemclub.wordpress.com/>

### June 23-25, 2023, Lodi, CA

CFMS SHOW AND CONVENTION  
Lodi Grape Festival Grounds  
413 E. Lockeford St., Lodi, CA  
Hours: Fri & Sat 10-5, Sunday 10-4  
Contact: rocksbob@sbcglobal.net  
Website: <https://cfmsinc.org>

### July 8-9, 2023 – Culver City, CA

Culver City Gem and Mineral Society  
Culver City Veteran's Memorial Aud ium,  
4117 Overland Ave., Culver City  
Hours Sat 10-6, Sun 10-5  
Contact: lexyhunter@aol.com  
Website: <http://culvercityrocks.org/fiesta/>

### August 5-6, 2023 – Roseville, CA

Roseville Rock Rollers Gem & Mineral  
Roebbelen Event Center, @the Grounds  
700 Event Center Dr., Roseville  
Hours: Sat. 10-5, Sun. 10-4  
Contact:  
gloriarosevillerockrollers@gmail.com  
Website:  
<https://www.rockrollers.com/index.html>

**August 19-20, 2023 – Tehachapi, CA**  
Tehachapi Valley Gem and Mineral Society  
500 East "F" Street, Tehachapi, CA  
Hours: 9-5  
Contact: (661) 972-1117,  
travis462@outlook.com  
Website: <https://www.tvgms.orcks>

**August 26-27, 2023 – Arcadia, CA**  
Pasadena Lapidary Society  
Arcadia Masonic Lodge  
50 W. Duarte Rd., Arcadia, CA  
Contact: (626) 260-7239  
Website: <https://pasadenalapidary.org>

**September 16-17, 2023 – Monterey, CA**  
Carmel Valley Gem & Mineral Society  
Monterey Fairgrounds, Monterey, CA  
Hours: 10-5  
Contact: (831) 801-5887  
Website: <http://cvgms.rocks>

**October 14-15, 2023 – Redwood City, CA**  
Peninsula Gem & Geology Society AND Sequoia  
Gem & Mineral Society  
Redwood City Community Activities Building,  
1400 Roosevelt Ave., Redwood City, CA  
Hours: 10-5  
Contact: (650) 575-3144, [cci@pacbell.net](mailto:cci@pacbell.net)  
Website: <http://sequoiagemandmineralsociety.org>

## **National/Regional** **Shows:**

**California Federation**  
**June 23-25, 2023**  
**Lodi Grape Festival Grounds**  
**413 E. Lockeford St.**  
**Lodi, CA 95240**

**Eastern Federation**  
**July 7-9, 2023**  
**Syracuse, NY**

**Midwest Federation**  
**September 16-17, 2023**  
**Howell, MI**  
**Northwest Federation**  
**AFMS 2023**  
**August 3-6, 2023**  
**Billings, MT**

**Rocky Mountain Federation**  
**July 14-16, 2023**  
**Casper, WY**

**South Central Federation**  
**Oct. TBA**  
**New Orleans, LS**

**Southeast Federation**  
**October 27-29, 2023**  
**Port St. Lucie, FL**

---

---

## **DON'T FORGET TO UP-** **DATE YOUR CLUB** **WEBSITE WITH YOUR** **NEW SHOW DATE**

**Check for show links at**  
**[www.cfmsinc.org/shows](http://www.cfmsinc.org/shows)**

## **REMINDER**

**Advertise your Show in as many**  
**Free locations as possible!**

- 1. Local newspapers**
- 2. Current events sections!**
- 3. Local TV stations,**
- 4. Community calendars!**
- 5. Other Local Shows**

**Advertise your shows in**  
**the *Rock & Gem Magazine!***  
**[www.rockngem.com/](http://www.rockngem.com/showdate-submissions/)**  
**showdate-submissions/**  
**Send the information in**  
**early so it's published in**  
**the magazine as well as**  
**online.**

## **GET YOUR EXHIBITS** **READY!!**

By Pat LaRue, Rules Committee

One of the features unique not only to club shows but the annual CFMS show is the exhibit area. This is where we have the opportunity to show the general public what our hobby is all about. With a little bit of luck those exhibits might create interest in joining a local society/club.

Exhibitors have the opportunity to show off their work either as a competitive exhibit or a non-competitive display. Those opting to display in competition have the opportunity to win a trophy. There are a multiple of categories to choose from ranging from lapidary, minerals, jewelry to educational and open. What is the open category? This category is designed to accommodate the display that really doesn't fit anywhere else.

I wrote a series of articles in 2022 giving some how-to tips about exhibiting in general and specific information on some of the major categories. These are available for review in the CFMS Newsletters on the CFMS website. I recommend all exhibitors, especially if you are new, to look at the one which discusses general tips on what will create a display folks will want to look at.

We recommend that you provide your own display case or borrow one from your club if possible. To date the show committee has been able to secure a very limited number of cases from nearby clubs and some of those are already reserved. These will be available on a first come, first serve basis so get your application in sooner rather than later.



## THE CALIFORNIA FEDERATION OF MINERALOGICAL SOCIETIES, INC.

**Earth Science Studies—Camp Paradise 2023 12725 LaPorte Rd., Strawberry Valley, CA 95930**

**CAMP PARADISE** is approximately 50 miles east of Marysville on Highway E-21(Marysville Rd.) towards Brownsville. Elevation is approximately 3,500 ft. The facilities are at a rustic church camp. Bunk beds are furnished in rooms and cabins. Bathrooms and showers are communal and located in each building. Housekeeping is the responsibility of each guest. On a limited basis, cabins are available for 4 or more persons, communal bathrooms and showers are located nearby. RV space with electricity, water and sewers for most spaces are available. **Room assignments are made by staff. This is a church camp facility—no alcoholic beverages are permitted.**

### COVID REQUIREMENTS

1. Proof of vaccination or negative test required.
2. All National, State, & County Covid requirements will be met.

### PLEASE READ CAREFULLY BEFORE REGISTERING

1. Cut off date Aug.4, 2023. After Aug. 4, 2023 There will be a \$25 fee for late registration
2. No refunds after August 4, 2023 unless a substitute is provided. A \$25 cancellation fee will be deducted.

Make Checks payable to: CFMS Earth Sciences.  
Cost per one week session is \$500.00 (Room/Board)  
Send checks to: Glenda Keil  
1116 Fremont Way  
Sacramento, CA 95918  
(916) 448-8341  
gkeil@comcast.net

For Information contact:  
Jill Atkins  
[Atkinsdesign@gmail.com](mailto:Atkinsdesign@gmail.com) Call 775.232.6626  
Gary Atkins  
[garysgems@gmail.com](mailto:garysgems@gmail.com) Call 775.412.2020

Please Note: Sign in will be on Sunday, August 20, 2023, and Sunday, August 27, 2023, from 1:00 pm to 4:00 pm

**Classes** – Beginning Faceting, Beginning Lapidary, Advanced Lapidary, Soft stone Carving, Beginning Silversmithing, Intermediate and Advanced Silversmithing, Lost Wax Casting, Beading, PMC-3-clay, Fused Glass, Enamel, Cold Connection, Intarsia. **All classes are subject to change. Please Note: Class assignment preference will be given to first time students. Applications will be accepted starting March 15, 2023.** You will receive confirmation by e-mail.

\*\*\*\*\*Changes may be made as necessary\*\*\*\*\*

CFMS NEWSLETTER APRIL 2023

Registration Form – Please PRINT CLEARLY

1<sup>st</sup> Choice class \_\_\_\_\_ 2<sup>nd</sup> class \_\_\_\_\_ 3<sup>rd</sup> class \_\_\_\_\_

Are you new to the ESS Program? Yes \_\_\_\_\_. No \_\_\_\_\_

\_\_\_\_\_ Week 1. August 21 – 26 \_\_\_\_\_ Week 2 August 29 – September 2 \$500 per person/per week

Name 1 \_\_\_\_\_ Name 2 \_\_\_\_\_

Address \_\_\_\_\_ City \_\_\_\_\_ State \_\_\_\_\_ Zip \_\_\_\_\_

Email \_\_\_\_\_ Club affiliation \_\_\_\_\_

**Accommodations:(Circle one).** DORM: Couples Women Men Cabin. RV Space

Who would you like to room with if possible? \_\_\_\_\_.

Use a C-Pap Machine? \_\_\_\_yes\_\_\_\_no

Dietary Constraints: \_\_\_\_Food. \_\_\_\_Diabetic. \_\_\_\_Vegetarian \_\_\_\_Other. (please explain)\_\_\_\_\_

**Due to the lack of dietary knowledge and various interpretations of different needs, we ask that you bring your special food items, and we will do our best to prepare them for you**

**Additional things you should know:**

Animals will be allowed in the RV area only and must be kept on a leash at all times and debris picked up after. Any violations could result in adherence to the Camp Paradise No Pet Rule.

By attending this activity, you are giving your consent for CFMS to make photographs, videotapes, films, email, or other representations of you. I hereby grant CFMS unrestricted right to copyright any of the above-mentioned containing images of me as well as the unrestricted right to me and reuse them with the caption information, in whole or in part. These rights include, but are not limited to the right to publish, copy, distribute, alter, license, and publicly display these materials and images for editorial, trade, marketing and the advertising purposes.

\_\_\_\_\_  
Signature

Please make a copy for your records.

## 2023 CFMS Officers, Chairmen and Committee Roster

**PRESIDENT**

Kimberly Fiala (Glenn)

(916) 412-0453

fialakimberly at yahoo.com

**TREASURER**

Diane Cook (John)

(805) 340-9026

johndianedaisy at yahoo.com

**FIRST VICE PRESIDENT**

Bob Rush (Pat)

(209) 365-3301

rocksbob at global.net

**SECRETARY**

Frank Van Hecke

(530) 575-4252

4vanclan5 at att.net

**SECOND VICE PRESIDENT**

Heidi Hall

(707) 291-8904

hdafler at yahoo.com

**EXECUTIVE SECRETARY/TREASURER**

Pat LaRue (Bural)

(909) 874-5664

bplarue at earthlink.net

**ALL AMERICAN CLUB**

Diane Cook (John)

(805) 340-9026

johndianedaisy at yahoo.com

**BULLETIN AIDS**

Celia Churchill (Chris)

cfmsbeac at gmail.com

**BY-LAWS**

Tony Fender (Sandie)

(626) 807-5279

arhfender at gmail.com

**CFMS CAB CASES - NORTH**

Paul Rose (Jo Ann Maesi)

(650) 302-6684

pmrose63 at gmail.com

**CAB CASES - SOUTH**

Chris Ward

(818) 439-0217

chris\_ward678 at yahoo.com

**CAB CASES - CENTRAL**

Bob Papac

(661) 821-7103

getback at csurfers.net

**CFMS DIRECTORS TO AFMS**

Kimberly Fiala (see Pres)

Bob Rush ( See 1<sup>st</sup> VP)

**CFMS JURY OF AWARDS**

Heidi Hall, Chair (See 2<sup>nd</sup> VP)

Kimberly Fiala (See President)

Jim Barton (See Field Trips North)

**CFMS NEWSLETTER EDITOR**

Pat LaRue (See Exec Sec/Treas)

**CFMS REP TO AFMS**

Jim Brace-Thompson, chair (Nancy)

(805) 659-3577

jbraceth at roadrunner.com

**CUSTODIAN**

Bob Rush (See 1<sup>st</sup> VP)

**EARTH SCIENCE STUDIES**

Gary & Jill Atkins, Co-chairmen

(775) 232-6626

atkinsdesign at gmail.com

Glenda Keil—Camp Registrar North

**ELECTRONIC COMMUNICATIONS**

Marcia Goetz (Joe)

**ENDOWMENT FUND—CFMS**

Sharon Rogow, Chair (Bart Solomon)

(702) 499-0272

sharonrnat cox.net

Kimberly Fiala (See Pres)

Bob Rush (See 1<sup>st</sup> VP)

**ENDOWMENT FUND—AFMS**

Bural LaRue (Pat)

(951) 644-5004

bplarue at earthlink.net

**FACILITY DEVELOPMENT**

OPEN

**FIELD TRIPS NORTH**

Jim Barton (Darlene)

(916) 847-7321

geologist1 at surewest.net

**FIELD TRIPS SOUTH**

OPEN

**FINANCIAL ADVISORY COMMITTEE**

Kimberly Fiala (See 1<sup>st</sup> VP)

Fred Ott (Susan)

**GOLDEN BEAR**

Bural LaRue, Chair (Pat)

(909) 644-5004

bplarue at earthlink.net

Susan Chaisson-Walblom

(661) 406-0143

slchaisson at yahoo.com

Jim Brace-Thompson (See Jr. Activities)

Kimberly Fiala (See Pres)

Jim Barton (See Field Trips North)

**HISTORIAN COMMITTEE**

Steve Collett, Chair (Cathy)

starmstr1 at bak.rr.com

Memorabilia—Susan Martin

Past Presidents Case—Sandie Fender

Photo Restoration—John Martin

**INSURANCE**

Ellen Ferrell

(727) 512-0381

ellenbf2007 at aol.com

**INTERNET COMMITTEE**

webmaster TBD

Marcia Goetz (See Show Dates)

**LEGAL ADVISOR**

OPEN

## CFMS NEWSLETTER APRIL 2023

### **JUNIOR ACTIVITIES**

Jim Brace-Thompson, chair (Nancy)

(805) 659-3577

jbrace at roadrunner.com

### **LEGAL ADVISOR**

OPEN

### **LONG RANGE PLANNING**

Jim Barton, Chair (See Field Trips North)

All living CFMS Past Presidents

2022 Executive Committee

### **MEMBERSHIP**

Bob Rush , Chair (Pat) (See Treasurer)

Dick Pankey (Betty)

Fred Ott (Susan)

### **MUSEUM COMMITTEE**

Frank Van Hecke

(530) 575-4252

4vanclan5@att.net

### **NOMINATING COMMITTEE**

Susan Chaisson-Walblom, Chair

(661) 406-0143

slchaisson at yahoo.com

Sharon Rogow (Bart Solomon)

Dick White (Phyllis)

Bob Papac (Debbie)

Steve Collett (Cathy)

Glenn Fiala, alternate

### **OFFICERS & CHAIRMEN MANUAL**

Jim Barton (See Field Trips North)

### **PARLIAMENTARIAN**

Tony Fender (See Bylaws)

### **PHOTOGRAPHER**

John Martin (see PLAC)

### **PROGRAM AIDS**

Emmy Lam

(818) 297-7132

CFMSprogramaids at gmail.com

### **PUBLIC LANDS ADVISORY**

John Martin, Chair (Susy)

(661) 942-8336 FAX (661) 945-2589

plac at antelecom.net

### **ROCKHOUND OF THE YEAR**

Chris Ward (See Cab Cases South)

### **RULES COMMITTEE**

Colleen McGann, Chair

kmcgann0009 at gmail.com

Pat LaRue (See Exec Sec/Treas)

Jim Brace-Thompson (See Jr. Activities)

Bob Rush (See 1<sup>st</sup> VP)

### **SAFETY COMMITTEE**

Bart Solomon (Sharon Rogow)

(702) 499-0272

sharonrr at cox.net

### **SCHOLARSHIP-AFMS**

Pat LaRue (see Exec Sec/Treas)

### **SCHOLARSHIP-CFMS**

Heidi Hall, Chair (See 2<sup>nd</sup> VP)

Executive Committee

### **SHOW CONSULTANT-SOUTH**

Susan Chaisson-Walblom

(661) 406-0143

slchaisson at yahoo.com

### **SHOW CONSULTANT-NORTH**

Bob Rush (See 2<sup>nd</sup> VP)

### **SHOW COORDINATOR-2024**

Bural & Pat LaRue (See Exec. Sec/Treas)

### **SHOW DATES**

Marcia Goetz (Joe)

(626) 260-7239

marciagoetz195 at gmail.com

### **TAX ADVISOR**

Pat LaRue (see Exec Sec/Treas)

### **TROPHY COORDINATOR**

Frank Mullaney

(408) 691-2656

rockyfiv atv@gmail.com

### **VISUAL PROGRAMS**

Sharon Rogow (Bart Solomon)

(702) 499-0272

sharonrr at cox.net

### **WEB SITE CONTEST**

Merryan O'Neill

(530) 622-4229

logtown49 at gmail.com



**2023 CFMS CONVENTION AND SHOW**

Lodi Grape Festival & Harvest Fair  
413 E. Lockeford St.  
Lodi, CA

**ADVANCE REGISTRATION FORM—DEADLINE JUNE 1, 2023**

Registration will be recorded under this name – PLEASE PRINT CLEARLY

Name \_\_\_\_\_ Phone \_\_\_\_\_  
Address \_\_\_\_\_ E-mail \_\_\_\_\_  
City \_\_\_\_\_ State \_\_\_\_\_ Zip \_\_\_\_\_  
Club Affiliation \_\_\_\_\_ Exhibitor Yes \_\_\_\_\_ No \_\_\_\_\_

**ADDITIONAL REGISTRANTS:**

\_\_\_\_\_ CLUB \_\_\_\_\_  
\_\_\_\_\_ CLUB \_\_\_\_\_  
\_\_\_\_\_ CLUB \_\_\_\_\_

**SHOW ADMISSION FEES:**

\_\_\_\_\_ Adult tickets @ \$6 per day OR \_\_\_\_\_ 3-day pass for \$15  
\_\_\_\_\_ Senior (60+) tickets @ \$5 per day OR \_\_\_\_\_ 3-day pass for \$12  
\_\_\_\_\_ Juniors (12-17) \$3 per day OR \_\_\_\_\_ 3-day pass for \$7

Kids under 12 are FREE WHEN ACCOMPANIED BY A PAID ADULT.

Free admission to Military (active, veterans and their dependents) with valid military ID card.

Demonstrators and Exhibitors will receive complimentary admission for themselves and 1 guest.

Additional admission tickets may be purchased with this form or at the admission gate during the show.

**TOTAL FOR ADMISSIONS:** \$ \_\_\_\_\_

**BANQUET RESERVATIONS:** To be held at the Jackson Room Saturday June 24 on the fairgrounds. Mexican buffet. Awards to follow.

\_\_\_\_\_ @ \$40 \$ \_\_\_\_\_

**GRAND TOTAL:** Make check payable to 2023 CFMS Show \$ \_\_\_\_\_

Mail this form with payment to CFMS, PO Box 1657, Rialto, CA 92377. Make check payable to CFMS.

Please bring a copy of this form to the show.

**CFMS NEWSLETTER**

PO Box 1657  
Rialto CA 92377-1657

Pat LaRue, Editor

Return Service Requested

Non-Profit Org  
US Postage  
PAID  
San Bernardino, CA  
Permit No 1290

**CALIFORNIA FEDERATION OF MINERALOGICAL SOCIETIES**

**2020 Gem, Mineral & Jewelry Festival**

**June 23–25, 2023**



Lodi Grape Festival & Harvest Fair  
413 East Lockeford Street  
Lodi, CA



10am – 5pm Friday & Saturday

10am – 4pm Sunday

Educational Exhibits  
Kid's Activities

Demonstrators  
Dealers

For information contact:

Bob Rush, Show Chairman  
[rocksbob@sbcglobal.net](mailto:rocksbob@sbcglobal.net)

Susan Chaisson-Walblom, Dealer Chairman  
[slchaisson@yahoo.com](mailto:slchaisson@yahoo.com)