



CFMS NEWSLETTER

Vol LX #6

June 2023



PRESIDENT'S MESSAGE

By Kimberly Fiala

Hello June,

WOW! I still can't believe how fast this year has gone! Lots of great things will be happening this month. There are several events to attend and enjoy this warm weather. What events you may ask? Well, let me tell you! There are shows to attend like Escondido, Bellflower and of course the one you all have been waiting for is the CFMS Show and Convention happening June 23-25, 2023 in Lodi. But we still would appreciate some more folks to sign up and work the show! Yes, I am still asking for volunteers! We would love for you to come out and help make this show become a successful show, we cannot do this without you!

I have sent out emails with the subject line as Volunteer Sign up now open for CFMS Show and Convention - June 2023, please sign up. The body of the email looks like:

Hello everyone,
Volunteer opportunities for "CFMS SHOW AND CONVENTION" are now open.

I am sending this message out to all local area clubs around Lodi to help with the CFMS Show and Convention.

We can make this a successful and exciting show with your help! Why not be a part of it and help the community learn more about our society!

Please click on the following web link (or copy it into your web browser if clicking doesn't work) to go to the signup sheet:

volunteersignup.org/7B9XC

To sign up, just follow the instructions on the page. It only takes a few seconds to do.
Thank you for volunteering!

We appreciate everyone's effort in helping and making this a show happen and I look forward to seeing you all there!

Lastly, I do have to say don't forget about Flag Day (commemorates the date in 1777) or Father's Day, which is a day for bar-b-que outdoors! And just before our show is the official time that summer begins but I'm sure we feel differently!

See you ALL in JUNE! Don't forget we will make this show great and let's have some fun!

Kimberly Fiala



On the Inside

Mark Your Calendar.....	2
CFMS Insurance & Website Contacts.	2
Donations.....	2
Lodi Show Cracker Barrel.	2
Jr. Activities.....	3
Last Call for Exhibitors.	4
Show Drawing Prize.....	4
Vendor Spaces Available.....	4
In Memoriam.	5
CFMS Endowment Fund.	5
Camp Paradise Part 3.	6
Show Dates.....	7-8
Camp Paradise Corrections	8
Please Note.....	8
Officer & Chairmen Roster.	9-10
CFMS Show Preregistration Form.....	11

MARK YOUR CALENDAR

June 15..... Deadline for meeting reports
June 23-25. CFMS Convention and Show
July 5. Deadline for Aug newsletter
Aug 5. Deadline for September newsletter
Aug 20-26. Camp Paradise Week 1
Aug 27-Sep 2. Camp Paradise Week 2

CFMS INSURANCE CONTACTS

McDaniel Insurance Services
PO Box 1294, Ojai, CA 93024
Tel (805) 646-9948 or (800) 400-7288
Fax (805) 646-9976; email: mcins@west.net
Web Site: www.mcdanielinsuranceservices.com

Ellen Ferrell
1392 Bouquet Dr. #A
Upland, CA 91786-3358
(727) 512-0381
ellenbf2007@aol.com

CFMS NEWSLETTER SUBSCRIPTIONS

CFMS Newsletter is published 11 times a year by the California Federation of Mineralogical Societies, Inc., PO Box 1657, Rialto, CA 92377-1657. Subscription: \$5.50 per year, January through December.

CFMS WEBSITE

The CFMS website is accessible at www.cfmsinc.org
Editors are invited to download articles for their bulletins from this website. Be sure to cite the source.

NOTES FROM THE EDITOR

The deadline for the newsletter is the 5th day of the month prior to the month of publication. Articles should be sent to the editor at bplarue@earthlink.net. "snail mail"? Please send to the CFMS PO Box 1657, Rialto, CA 92377-1657. Articles without a byline are written by the editor.

DONATIONS

Donations to any of the funds administered by CFMS and/or AFMS are tax deductible under the rules governing tax exempt organizations which are 501(c)(3). Your cancelled check or receipt is considered to be proof of your donation for purposes of filing your federal tax return. If a personal donation is \$250 or more, a letter attesting to that amount is also required. Member clubs and individuals are encouraged to donate to any of the following:

CFMS Scholarship Fund
CFMS Endowment Fund
CFMS General Fund
Diedrick Memorial Scholarship Fund
AFMS Scholarship Foundation
AFMS Endowment Fund
Burns Memorial Camp Fund (benefits Earth Science Studies)
Facilities Development Fund

Your donations should be sent to:

Pat LaRue, Exec. Sec/Treas
PO Box 1657
Rialto, CA 92377-1657

Receipts and any supporting documents will be forwarded on to the committee member responsible for acknowledgment. Please make all checks payable to CFMS or AFMS as appropriate and note the fund in the memo section.

CFMS LODI SHOW CRACKER BARREL

Hello to all CFMS members, Directors and EC. There will be a silent auction at the Cracker Barrel on Friday evening at the Lodi show. Please send your clubs donations with your Director to the shows meetings. All proceeds go to the CFMS Endowment fund that keeps things running and able to help. Thank you so much for all your generosity in donating.

Submitted by Heidi Hall, CFMS 2nd VP



JUNIORS ACTIVITIES

By Jim Brace-Thompson, CFMS
Junior Activities Chair

Building a Successful Kids Program, Part 4: Publicize!

If you've been reading this column, you know that last year I surveyed CFMS clubs to gauge the state of kids' programs. I promised I'd share "best practices" garnered as a result. In the last three months, I noted the top two ingredients for success involve having a "Kids' Champion" within your club, then having all club members support that Champion with volunteers to provide expertise and resources in leading activities. The next step was scheduling out a full year's schedule of programs in advance.

And now? Publicize!

It's hard to have a kids' program if parents within your community don't know about your club and all it offers. Here are PR tips that emerged in the survey:

- If you have a local club show, be sure to have a Kids' Booth with fun activities, and when you spot parents and kids who seem to be having an especially good time and showing strong interest, don't let them wander off to the displays or dealers. Engage them in conversation, let them know about club field trips for adults and kids, and have a sign-up sheet to capture their phone numbers and email addresses. Then follow up within a week to invite them to your next meeting or event. Be proactive! Don't just give them a club flyer and expect them to show up. Engage and follow up.
- At your show, have a kids' exhibit with photos and results of activities to visually illustrate what your program does and what it can offer to kids.
- If you don't have a show but your community sponsors any sorts of Art Walks or sidewalk craft fairs, arrange to have a club booth.
- Go to where the kids are! Does your club engage in educational outreach, for instance with classroom visits, a station at school Science Nights, presentations for youth groups (Scouts, 4H, YMCA), etc.? Whenever doing educational outreach give out Goodie Bags with a leaflet not just about your club, but especially the juniors program.

- Go to where the kids are—again! A couple clubs have noted success in putting yard signs up at youth soccer and baseball games and similar venues to publicize their club and kids' programs, along with a web address, email address, and/or QR Code.
- Finally, if you really want to reach young adults with young children, embrace social media! If your club lacks a Facebook page, establish one today. And begin posting fun photos showing fun events any time your club does something kid-friendly while also celebrating achievements of your club's kids (with parental approval for a posting).

In short, don't sit back and lament that you can't have a kids' program because you have no kids in your club. Explore all avenues. Be proactive. Be persistent. Follow-up.

Finally, with our 2023 CFMS Show & Convention now just days away...

I again thank all who have already offered help in so many ways with the Kids' Booth. So many members from so many clubs have already come through in spades, and each and every one of you is appreciated! Here's to seeing everyone in Lodi—hopefully, helping in the Kids' Booth!





This sterling silver handcrafted pendant was donated to the opportunity drawing to be held at the CFMS Show being held in Lodi, June 23-25. Silver work is by Jill Atkins and the stone was done by Bob Rush. Tickets will be available at the show. Have something you wish to donate to the cause? Please bring to the show on set up day so it can be included in the display case.

LAST CALL FOR EXHIBITS

The show is now just around the corner but there is still time to get your exhibits ready to display. Just know that the exhibit displays are the one thing that sets Federation and club shows apart from the many commercial shows. Whereas both kinds of show feature dealers who offer a vast array of merchandise ranging from fine jewelry and other finished goods to the products used to produce your own creations, only the club and Federation hosted events show off the handiwork of our multi-talented membership.

Opportunities exist for both competitive and non-competitive exhibits. Applications are posted on the CFMS website, www.cfmsinc.org. Exhibitors get free admission to the show for themselves and a guest.

There are loaner cases available for a rental fee of \$10. Unfortunately we are unable to provide inside case dimensions since these are coming from more than one source. Due to the need to have the table layouts done several days prior to show time, no entries can be accepted after June 10.



SHOW & CONVENTION ROCK, BEAD & JEWELRY SHOW RETAIL VENDOR SPACES ARE STILL AVAILABLE

At: <https://cfmsinc.org/>

For more information contact: Susan at
slchaisson@yahoo.com

Show Dates: June 23, 24 & 25, 2023
Location: Lodi Grape Festival Grounds
413 East Lockeford Street
Lodi, California 95240

Show Hours:

Friday & Saturday 10:00 A.M. to 5:00 P.M.
Sunday 10:00 A.M. to 4:00 P.M.

COME JOIN IN THE FUN!!!



IN MEMORIAM

I just learned that Mike Kokinos passed away April 26 at the age of 95. Mike was a long time friend and mentor who could always be counted on to provide information and assistance whenever asked. I often referred to him as a “second set of eyes” whenever Federation finances and reporting were involved. He could be counted on to spot any errors or omissions in the various financial reports I regularly prepared. The spreadsheets that I use today to reconcile our Morgan Stanley investment accounts were created by him.



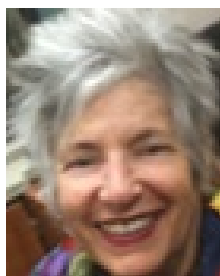
Mike was a CFMS Past President who served in 1964. I believe he may have been the youngest person to ever serve in that capacity. Until health issues began to take its toll, he served as a member of the Financial Advisory Committee and prepared the CFMS tax paperwork. He created the tax advisor position when he took on the task of assisting CFMS member clubs which were encountering difficulties with their non-profit status. He did this on a completely volunteer basis only asking that the clubs he assisted make a donation to the CFMS Endowment Fund. When some of the clubs made the difficult decision to disband, he helped guide them thru the often difficult process.

Mike was a dedicated amateur mineralogist who had an extensive collection of mineral specimens including micromounts. He was named to the Micromounters Hall of Fame in 2010 in recognition of his contributions to that specialized part of the mineral collecting world. I first met Mike when he was the chairman of the Rules Committee and he talked me into becoming a mineral judge. He even convinced me that I could judge micromounts. For those not familiar with what these are, a micromount is a very small mineral specimen which is best viewed under a microscope.

He was a long time member of the El Dorado County Mineral & Gem Society as well as a founding member of the Northern California Mineralogical Association which holds its annual meeting and workshop in the Placerville area.

Our condolences go out to Theresa and members of his family. He will be missed.

Submitted by Pat LaRue



ENDOWMENT FUND

By Sharon Rogow, Chairman

Are you preparing for the CFMS Show and Convention in Lodi being held on June 23-25? That time is rapidly approaching! This is our major fund-raising event for 2023 and we are asking for your help. Both monetary and rock related items donated to the Endowment Fund for us to sell at the show would be greatly appreciated. Donations may be tax deductible.

We also need volunteers during show hours to work at our selling tables. It is actually fun to interact with other club members, the public and kids of all ages who come to buy and to spin our roulette wheel!

Please contact Sharon at (702) 499-0272 or sharonrr@cox.net to tell us that you are donating and/or volunteering some time at our table space.

Here is a suggested check list to help you get ready to attend the show.

- Make hotel/motel reservations. Website has a list. Camping at \$35.00 per night is available and the application is on the web site.
- Go on Facebook to the CFMS page to "like" the page and you will be placed in a drawing for a rock related item.
- Prepare a list and gather the materials that you will bring to the show.
- Decide where you want to volunteer to help during the show i.e Endowment selling table, kids table or others.
- Prepare monetary donations to CFMS Endowment and/or Scholarship Funds.
- Complete and mail in the advance registration form and the Banquet Reservation form along with payment.

We encourage everyone to support the Endowment Fund as it is the underlying help entity for the Federation fundraising activities. At the show we will have lots of materials for sale, some are of superior quality, a roulette wheel that kids of all ages enjoy. You can deliver donations to the show and drop them off at our space or send with people who are attending if you are not. Nothing to donate? You can always volunteer some time to help at CFMS locations.

We are looking forward to seeing all of you in June at the Lodi Grape Festival Grounds Endowment Space!

CAMP PARADISE PART 3

By Jill Atkins, Earth Science Studies co-chair

Walking past beginning silversmithing and advanced silver smithing you come to Dena, an amazing teacher and person, who teaches bead weaving. She is soft spoken and always has a smile on her face.

Beads have been an item of adornment through-out the ages and by many cultures. Dena will help you take that basic skill to a higher level and you will walk away amazed that you made such a wonderful thing. She expands the realm of possibility. For those of you who have miniature people this is a great project to take home to them so they too can explore possibilities. There is a materials fee. No prerequisite.



To continue in the barn...beyond the beading area you come to the dichroic glass and silver metal clay (PMC) area taught by Judi Gooch who is wonderful and also Karin and Tori who are also wonderful. You are in good hands. To say that this area

produces spectacular work is an understatement. Judy and Karin and Tori teach their students how to cut glass, assemble that glass on a base, add refinements and then slump it in a kiln. The result is a piece that rivals the finest jewels. Add a finding and a neck piece and you wear a beautiful new piece of jewelry. They also teach Precious Metal Clay. If you don't want to learn silver smithing and you want to make jewelry incorporating a stone then this is the class for you. Your stone is set into the clay before firing and when it has finished firing you just polish and wear. Easy, peasy sort of. This is jewelry making after all and nothing is that easy but Judy and Karin take you through the process to completion. And they are pretty cool gals to boot. There is a materials fee and you can purchase PMC and glass. Note: PMC one week...Glass fusing the other week. No prerequisite. Keep saving every month. Camp Paradise is the bargain of the century because all classes (except for the materials fee) your room and board are all included in the fee.

To continue the tour of the barn I take you to Glenn Fiala and wire wrapping. I don't know Glenn very well as he is new to Camp Paradise's teaching staff. But what I do know is that he is very talented. I am always surprised and amazed when I see someone take a straight piece of wire and bend it without kinks and wrap it around a stone or piece of glass. The technical skill is through practice but the artistic skill is innate and that is what sets him apart in his artistry. There is a no materials fee. No prerequisite.

Also in the barn is Janet Steigerwald who teaches enameling. Ooh, another opportunity to use fire! Janet will teach you about

a basic jewelry technique that has been in existence for hundreds of years. The powdered glass has been a time honored way of adding color to metal. She will also teach fire painting on metal. There is a materials fee and supplies to purchase. No prerequisite.

The next class to let you know about is casting. Taught by Joy, is the casting class and she is a joy. I slay myself! In this class you will learn how to create work in wax, put it in a vestment mixture where it is baked and then you pour molten metal into the hardened vestment for your casting. Once the vestment is broken away you can see your casting. A sprue cutter takes the sprues off and your piece can be sanded and polished. Don't worry about what a sprue is. Joy will explain all. She has all the equipment you need but you may want to bring your own tools. You may buy silver from Joy. She also demonstrates broom casting. This is a process where silver is melted to the molten stage and then poured over a wet broom. Done in silver, copper or brass, you wear your pieces with pride because you will get lots of compliments. There is a materials fee and casting is a 2 to 2 1/2 day class that begins at the beginning of the week. Joy has a schedule that must be followed in order to complete your piece. See her for more details. No prerequisite.



For those of you who have not been getting a newsletter let me bring you up to speed. Each year the California Federation of Mineralogical Societies sponsors a "Jewelry Camp". It is located in Northern California. Nestled in the foothills of the Sierra, from Reno it is a 2.5 hour drive. From other clubs it may be closer or farther away. The camp was built in the 1950's and harkens back to another era of mess halls, dorms and a flag pole in the middle of camp. It is charming in its rustic ness. Please do not mistake it for a Hilton. No one is going to put chocolate on your pillow...which you have to bring anyway! You will also want to bring a flashlight for the walk back to your dorm. During this one week (or two week) camp the jewelry (and lapidary) arts are taught including silver smithing, lapidary, casting, wire wrapping, faceting, beading, precious metal clay, dichroic glass, enameling, and 3 types of stone carving. For the cost of \$500.00 per week, students get their housing, great and plentiful meals and all the classes listed above. I would be hard pressed to find a better bargain if the jewelry arts is your bag.

For the past few months I have been taking my readers through a virtual tour of the camp. If you are just tuning in you missed the part about the swimming pool. Yes, Camp Paradise has a big, beautiful, cool you down pool. Almost the best part of a hot day.

Editor's note: Due to the fact that there will be no newsletter in July, I combined parts 3 and 4 into one item with some editing thrown in to pull the two parts together.

2023 CFMS SHOW DATES

Shows and Events

Sponsored by

CFMS Clubs & Societies!

Please submit your

*Show or Event as soon as possible
to receive maximum advertising value!*

Email to:

SHOW DATES

Use the Online Show Form

at www.cfmsinc.org

(click on Shows)

*You should receive a confirmation
within 5 days after submitting your
Show Date information!*

CLUB/SOCIETY SHOWS ARE LISTED HERE

2023

June 3-4, 2023 – Jackson, CA

Amador County Gem & Mineral Society
Gem & Craft Show at Kennedy Mine, 12594
Kennedy Mine Rd., Jackson CA 95642
Hours 10-4
Contact: (916) 698-9853,
mountaingirl@volcano.net
Website: <http://amadorgemandmineral.org>

June 10-11, 2023 – Escondido, CA

Palomar Gem and Mineral Club
The Convention Center at the California Center
for the Arts, 340 N. Escondido, CA 92025
Hours: Sat 10-5, Sun 10-4
Contact: tonifloyd41615@gmail.com
Website: <http://palomargem.org>

June 17, 2023 – Bellflower, CA

Delvers Gem & Mineral Society
Delvers Parking Lot Sale, 14515 Blaine Ave.,
Bellflower, CA 90706
Hours: 10-4
Website: <https://delversgemclub.wordpress.com/>

June 23-25, 2023, Lodi, CA

CFMS SHOW AND CONVENTION
Lodi Grape Festival Grounds, 413 E. Lockeford
St., Lodi, CA 95240
Hours: Fri & Sat 10-5, Sunday 10-4
Contact: rocksbob@sbcglobal.net
Website: <https://cfmsinc.org>

July 8-9, 2023 – Culver City, CA

Culver City Gem and Mineral Society
Culver City Veteran's Memorial
Auditorium, 4117 Overland Ave., Culver
City 90203
Hours Sat 10-6, Sun 10-5
Contact: lexyhunter@aol.com
Website: <http://culvercityrocks.org/fiesta/>

August 4, 5 & 6, 2023 – Nipomo, CA

Orcutt Mineral Society
Nipomo High School, 525 N. Thompson
Ave., Nipomo, CA 93444
Hours: Fri. & Sat 10-5, Sun. 10-4
Contact: nipomocowgirl55@yahoo.com
Website: <http://www.omsinc.org>

August 5-6, 2023 – Roseville, CA

Roseville Rock Rollers Gem & Mineral
Soc.
Roebbelen Event Center, @the Grounds –
Roseville, 700 Event Center Dr.,
Roseville, CA 95678
Hours: Sat. 10-5, Sun. 10-4
Contact:
gloriarosevillerockrollers@gmail.com
Website:
<https://www.rockrollers.com/index.html>

August 19-20, 2023 – Tehachapi, CA

Tehachapi Valley Gem and Mineral
Society
500 East "F" Street, Tehachapi, CA 93561
Hours: 9-5
Contact: (661) 972-1117,
travis462@outlook.com
Website: <https://www.tvgms.orcks>

August 26-27, 2023 – Arcadia, CA

Pasadena Lapidary Society
Arcadia Masonic Lodge, 50 W. Duarte
Rd., Arcadia, CA 91007
Contact: (626) 260-7239
Website: <https://pasadenalapidary.org>

September 16-17, 2023 – Monterey, CA

Carmel Valley Gem & Mineral Society
Monterey Fairgrounds, Monterey, CA
Hours: 10-5
Contact: (831) 801-5887
Website: <http://cvgms.rocks>

September 16-17, 2023 – Reno, NV

Reno Gem and Mineral Society
Reno/Sparks Convention Center, 4590 S.
Virginia St., Reno
Hours: Sat. 10-5, Sun. 10-4
Contact: (775) 229-4420,
sailondan55@aol.com
Website: www.renogms.org

October 7-8, 2023 – Grass Valley, CA

Nevada County Gen and Mineral Society
Nevada County Fairgrounds, 11228
McCourtney Rd., Grass Valley, CA 95949
Hours: Sat. 10-5, Sun. 10-4
Contact: 4vancan5@att.net

October 8, 2023 – Fallbrook, CA

Fallbrook Gen and Mineral Society
123 W. Alvarado St., Fallbrook, CA
Hours: 9-4
Contact: (760) 728-1130, info@fgms.org
Website: <http://www.fgms.org>

October 14-15, 2023 – Redwood City, CA

Peninsula Gem & Geology Society AND
Sequoia Gem & Mineral Society
Redwood City Community Activities
Building, 1400 Rosevelt Ave., Redwood
City, CA 94061
Hours: 10-5
Contact: (650) 575-3144, cci@pacbell.net
Website:
<http://sequoiagemandmineralsociety.org>

October 28-29 – San Diego, CA

San Diego Mineral & Gem Society
Liberty Station Conference Center/Point
Loma Nazerene University, 2660 Lanir, San
Diego, CA 92106
Hours: Sat. 10-5, Sun. 10-4
Contact: luannz@att.net
Website: <http://sdmg.org>

October 28-29, 2023 – Orange, CA

American Opal Society
Velvet Rose Event Center, 300 S. Flower
St., Orange, CA 92868
Hours: Sat. 10-6, Sun. 10-5
Contact: (714) 501-9959,
info@opalsociety.org
Website: <http://opalsociety.org>

November 18-19, 2023 – Lakeside, CA

El Cajon Valley Gem & Mineral Society
12584 Mapleview St., Lakeside, CA 92040
Hours: Sat 9-5, Sun 9-4
Contact: (619) 277-4981,
ecvgms@gmail.com
Website: <http://ecvgma.org>

National/Regional Shows:

California Federation

June 23-25, 2023

Lodi Grape Festival Grounds

413 E. Lockeford St.

Lodi, CA 95240

Eastern Federation

July 7-9, 2023

Syracuse, NY

Midwest Federation

September 16-17, 2023

Howell, MI

Northwest Federation

AFMS 2023

August 3-6, 2023

Billings, MN

Rocky Mountain Federation

July 14-16, 2023

Casper, WY

South Central Federation

Oct. 13-15, 2023

New Orleans, LS

Southeast Federation

October 21-22, 2023

Port St. Lucie, FL

DON'T FORGET TO UPDATE YOUR CLUB WEBSITE WITH YOUR NEW SHOW DATE

Check for show links at www.cfmsinc.org/shows

REMINDER

Advertise your Show in as many Free locations as possible!

1. **Local newspapers**
2. **Current events sections!**
3. **Local TV stations,**
4. **Community calendars!**
5. **Other Local Shows**

Advertise your shows in the *Rock & Gem Magazine!*

www.rockngem.com/showdate-submissions/

Send the information in early so it's published in the magazine as well as online.

PLEASE NOTE:

There will be **NO** newsletter published for the month of July because it is the month following the annual Convention and Show. The next newsletter will be for the month of August.

Reports for the Directors packet are due June 15 to allow time for duplication and preparation of the packets. As in previous years, I no longer mail packets to clubs which do not send a representative to the meeting. The majority of reports will be published in a subsequent newsletter with the exception of any financial information. If unable to meet this deadline, please bring a minimum of 60 copies of your report for distribution at the meeting.

CAMP PARADISE REGISTRATION UPDATE

The dates published on the registration forms published in prior newsletters are off by a day. Due to formatting issues with the revised form, I only include the following:

Please Note: Sign in will be on Sunday, August 20, 2023, and Sunday, August 27, 2023, from 1:00 pm to 4:00 pm.

Classes – Beginning Faceting, Beginning Lapidary, Advanced Lapidary, Soft stone Carving, Beginning Silversmithing, Intermediate and Advanced Silversmithing, Lost Wax Casting, Beading, PMC-3-clay, Fused Glass, Enamel, Cold Chasing, Intarsia. All classes are subject to change. Please Note: Class assignment preference will be given to first time students.

Corrected week 1 dates are August 20-26. Week 2 dates are August 27-Sept 2.



2023 CFMS Officers, Chairmen and Committee Roster

PRESIDENT

Kimberly Fiala (Glenn)

(916) 412-0453

fialakimberly at yahoo.com

TREASURER

Diane Cook (John)

(805) 340-9026

johndianedaisy at yahoo.com

FIRST VICE PRESIDENT

Bob Rush (Pat)

(209) 365-3301

rocksbob at sbcglobal.net

SECRETARY

Frank Van Hecke

(530) 575-4252

4vanclan5 at att.net

SECOND VICE PRESIDENT

Heidi Hall

(707) 291-8904

hdafler at yahoo.com

EXECUTIVE SECRETARY/TREASURER

Pat LaRue (Bural)

(909) 874-5664

bplarue at earthlink.net

ALL AMERICAN CLUB

Diane Cook (John)

(805) 340-9026

johndianedaisy at yahoo.com

BULLETIN AIDS

Celia Churchill (Chris)

cfmsbeac at gmail.com

BY-LAWS

Tony Fender (Sandie)

(626) 807-5279

arhfender at gmail.com

CFMS CAB CASES - NORTH

Paul Rose (Jo Ann Maesi)

(650) 302-6684

pmrose63 at gmail.com

CAB CASES - SOUTH

Chris Ward

(818) 439-0217

chris_ward678 at yahoo.com

CAB CASES - CENTRAL

Bob Papac

(661) 821-7103

getback at csurfers.net

CFMS DIRECTORS TO AFMS

Kimberly Fiala (see Pres)

Bob Rush (See 1st VP)

CFMS JURY OF AWARDS

Heidi Hall, Chair (See 2nd VP)

Kimberly Fiala (See President)

Jim Barton (See Field Trips North)

CFMS NEWSLETTER EDITOR

Pat LaRue (See Exec Sec/Treas)

CFMS REP TO AFMS

Jim Brace-Thompson, chair (Nancy)

(805) 659-3577

jbraceth at roadrunner.com

CUSTODIAN

Bob Rush (See 1st VP)

EARTH SCIENCE STUDIES

Gary & Jill Atkins, Co-chairmen

(775) 232-6626

atkinsdesign at gmail.com

Glenda Keil-Camp Registrar North

ELECTRONIC COMMUNICATIONS

Marcia Goetz (Joe)

ENDOWMENT FUND—CFMS

Sharon Rogow, Chair (Bart Solomon)

(702) 499-0272

sharonrr at cox.net

Kimberly Fiala (See Pres)

Bob Rush (See 1st VP)

ENDOWMENT FUND—AFMS

Bural LaRue (Pat)

(951) 644-5004

bplarue at earthlink.net

FACILITY DEVELOPMENT

OPEN

FIELD TRIPS NORTH

Jim Barton (Darlene)

(916) 847-7321

geologist1 at surewest.net

FIELD TRIPS SOUTH

OPEN

FINANCIAL ADVISORY COMMITTEE

Kimberly Fiala (See 1st VP)

Fred Ott (Susan)

GOLDEN BEAR

Bural LaRue, Chair (Pat)

(909) 644-5004

bplarue at earthlink.net

Susan Chaisson-Walblom

(661) 406-0143

slchaisson at yahoo.com

Jim Brace-Thompson (See Jr. Activities)

Kimberly Fiala (See Pres)

Jim Barton (See Field Trips North)

HISTORIAN COMMITTEE

Steve Collett, Chair (Cathy)

starmstr1 at bak.rr.com

Memorabilia—Susan Martin

Past Presidents Case—Sandie Fender

Photo Restoration—John Martin

INSURANCE

Ellen Ferrell

(727) 512-0381

ellenbf2007 at aol.com

INTERNET COMMITTEE

Ben Shutman, webmaster

JUNIOR ACTIVITIES

Jim Brace-Thompson, chair (Nancy)

(805) 659-3577

jbraceth at roadrunner.com

LEGAL ADVISOR

OPEN

CFMS NEWSLETTER JUNE 2023

LONG RANGE PLANNING

Jim Barton, Chair (See Field Trips North)

All living CFMS Past Presidents
2022 Executive Committee

MEMBERSHIP

Bob Rush , Chair (Pat) (See Treasurer)
Dick Pankey (Betty)
Fred Ott (Susan)

MUSEUM COMMITTEE

Frank Van Hecke

(530) 575-4252
4vanclan5 at att.net

NOMINATING COMMITTEE

Susan Chaisson-Walblom, Chair

(661) 406-0143
slchaisson at yahoo.com

Sharon Rogow (Bart Solomon)
Dick White (Phyllis)
Bob Papac (Debbie)
Steve Collett (Cathy)
Glenn Fiala, alternate

OFFICERS & CHAIRMEN MANUAL

Jim Barton (See Field Trips North)

PARLIAMENTARIAN

Tony Fender (See Bylaws)

PHOTOGRAPHER

John Martin (see PLAC)

PROGRAM AIDS

Emmy Lam
(818) 297-7132
CFMSprogramaids at gmail.com

PUBLIC LANDS ADVISORY

John Martin, Chair (Susy)

(661) 942-8336 FAX (661) 945-2589
plac at antelecom.net

ROCKHOUND OF THE YEAR

Chris Ward (See Cab Cases South)

RULES COMMITTEE

Colleen McGann, Chair

kmcgann0009 at gmail.com

Pat LaRue (See Exec Sec/Treas)

Jim Brace-Thompson (See Jr. Activities)

Bob Rush (See 1st VP)

SAFETY COMMITTEE

Bart Solomon (Sharon Rogow)

(702) 499-0272
sharonrr at cox.net

SCHOLARSHIP–AFMS

Pat LaRue (see Exec Sec/Treas)

SCHOLARSHIP–CFMS

Heidi Hall, Chair (See 2nd VP)

Executive Committee

SHOW CONSULTANT–SOUTH

Susan Chaisson-Walblom
(661) 406-0143
slchaisson at yahoo.com

SHOW CONSULTANT–NORTH

Bob Rush (See 2nd VP)

SHOW COORDINATOR–2024

Bural & Pat LaRue (See Exec. Sec/Treas)

SHOW DATES

Marcia Goetz (Joe)

(626) 260-7239
marciagoetz195 at gmail.com

TAX ADVISOR

Pat LaRue (see Exec Sec/Treas)

TROPHY COORDINATOR

Frank Mullaney

(408) 691-2656
rockyfiv at gmail.com

VISUAL PROGRAMS

Sharon Rogow (Bart Solomon)

(702) 499-0272
sharonrr at cox.net

WEB SITE CONTEST

Merryan O'Neill

(530) 622-4229
logtown49 at gmail.com

2023 CFMS CONVENTION AND SHOW

Lodi Grape Festival & Harvest Fair
413 E. Lockeford St.
Lodi, CA

ADVANCE REGISTRATION FORM—DEADLINE JUNE 1, 2023

Registration will be recorded under this name – PLEASE PRINT CLEARLY

Name _____ Phone _____

Address _____ E-mail _____

City _____ State _____ Zip _____

Club Affiliation _____ Exhibitor Yes _____ No _____

ADDITIONAL REGISTRANTS:

_____ CLUB _____

_____ CLUB _____

_____ CLUB _____

SHOW ADMISSION FEES:

_____ Adult tickets @ \$6 per day OR _____ 3-day pass for \$15
_____ Senior (60+) tickets @ \$5 per day OR _____ 3-day pass for \$12
_____ Juniors (12-17) \$3 per day OR _____ 3-day pass for \$7

Kids under 12 are FREE WHEN ACCOMPANIED BY A PAID ADULT.

Free admission to Military (active, veterans and their dependents) with valid military ID card.

Demonstrators and Exhibitors will receive complimentary admission for themselves and 1 guest. Additional admission tickets may be purchased with this form or at the admission gate during the show.

TOTAL FOR ADMISSIONS: \$ _____

BANQUET RESERVATIONS: To be held at the Jackson Room Saturday June 24 on the fairgrounds.
Mexican buffet. Awards to follow.

_____ @ \$40 \$ _____

GRAND TOTAL: Make check payable to 2023 CFMS Show \$ _____

Mail this form with payment to CFMS, PO Box 1657, Rialto, CA 92377. Make check payable to CFMS.

Please bring a copy of this form to the show.

CFMS NEWSLETTER

PO Box 1657
Rialto CA 92377-1657

Pat LaRue, Editor

Return Service Requested

Non-Profit Org
US Postage
PAID
San Bernardino, CA
Permit No 1290

CALIFORNIA FEDERATION OF MINERALOGICAL SOCIETIES

2023 Gem, Mineral & Jewelry Festival

June 23–25, 2023



Lodi Grape Festival & Harvest Fair
413 East Lockeford Street
Lodi, CA



10am – 5pm Friday & Saturday

10am – 4pm Sunday

Educational Exhibits
Kid's Activities

Demonstrators
Dealers

For information contact:

Bob Rush, Show Chairman
rocksbob@sbcglobal.net

Susan Chaisson-Walblom, Dealer Chairman
slchaisson@yahoo.com